

# WHAT GOES WHERE

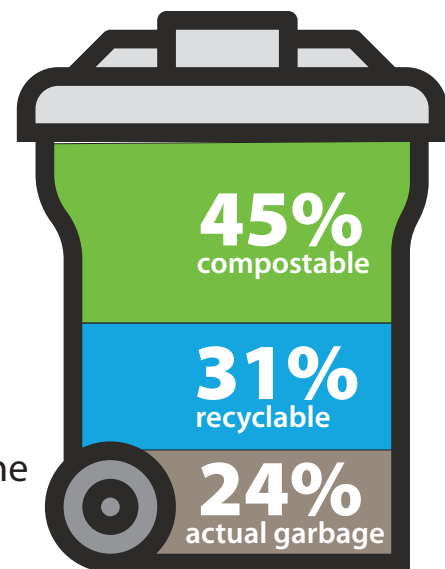
The District of Squamish is working towards becoming a Zero Waste community! This household guide contains useful tips and information to help residents better sort materials and divert more waste from the Squamish Landfill.



## OUR WASTE AT A GLANCE

Recent audit\* results of residential garbage collection showed:

- **45%** could be composted.
- **31%** could be recycled through the curbside collection program or at a drop-off location.
- **24%** actually belonged in the trash.



\*audit results from July 2018



## NEED TO RE-SIZE YOUR TOTE?

Garbage tote exchanges happen once a year. The deadline to request a change to your curbside garbage tote size is September 30 each year. Learn more at [squamish.ca/garbage-tote-size-selection](http://squamish.ca/garbage-tote-size-selection).



## NEED HELP SORTING?

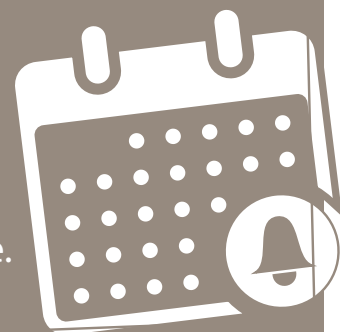
Search for an item using the new **Waste Wizard** look up tool available through the Squamish Curbside Collection app or at [squamish.ca/collection-schedule](http://squamish.ca/collection-schedule).

## BROKEN TOTE?

If your lid or lock has been damaged by wildlife, please contact GFL at [squamishtotes@gflenv.com](mailto:squamishtotes@gflenv.com) or **604.892.5675** for a free repair or replacement.

## NEVER MISS A COLLECTION DAY:

- Sign up for collection reminders by phone, email or app notification at [squamish.ca/collection-schedule](http://squamish.ca/collection-schedule) or download Squamish Curbside Collection app.
- Use our **Waste Wizard** materials lookup tool to know what goes where.





# ORGANICS



Popsicle Sticks & Toothpicks



Pizza



Pasta & Grains



Popcorn Kernels



Grass Clippings



Food Scraps



Fish & Shellfish



Jack O' Lanterns



Cooking Oils



Small Branches & Plants



Condiment, Sauces & Syrups



Candies



Vegetables



Paper Towels, Napkins & Facial Tissues



Eggs & Egg Shells



Wooden Utensils



Meat, Chicken & Bones



Soiled Pizza Boxes



Breads & Cereals



Coffee Grounds & Filters



Dryer Lint



Tea Bags



Nuts & Shells



Dairy Products



Fruit

Download the Squamish Curbside Collection app or sign up for collection schedule and electronic reminders at [squamish.ca/collection-schedule](http://squamish.ca/collection-schedule).

# GARBAGE



Animal Waste, Cat Litter, & Bedding



Twine



Dryer Sheets



Disposable Furnace Filters



Broken Holiday Decorations



Ribbons, Bows, Gift Bags & Foil Wrapping



Cigarettes, Cigars, & Ashes



Plant & Flower Makers/Tags



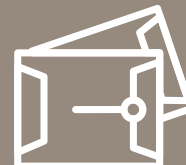
Garden Hose



Cotton Balls, Swabs, & Pads



Personal Hygiene Products



Padded Envelopes & Plastic Lined Paper



Torn & Ripped Books



Invasive Species (Bagged)



Diapers & Sanitary Products



Home Healthcare Waste



Plastic Cutlery



Plastic Squeeze Tubes & Straws



Construction Sawdust & Wood Shavings



Broken Plastic Toys



PVC & Vinyl



Broken Ceramics



Hangers (metal, wood & plastic)



Vacuum Bags & Dust

Download the Squamish Curbside Collection app or sign up for collection schedule and electronic reminders at [squamish.ca/collection-schedule](http://squamish.ca/collection-schedule).



# RECYCLING

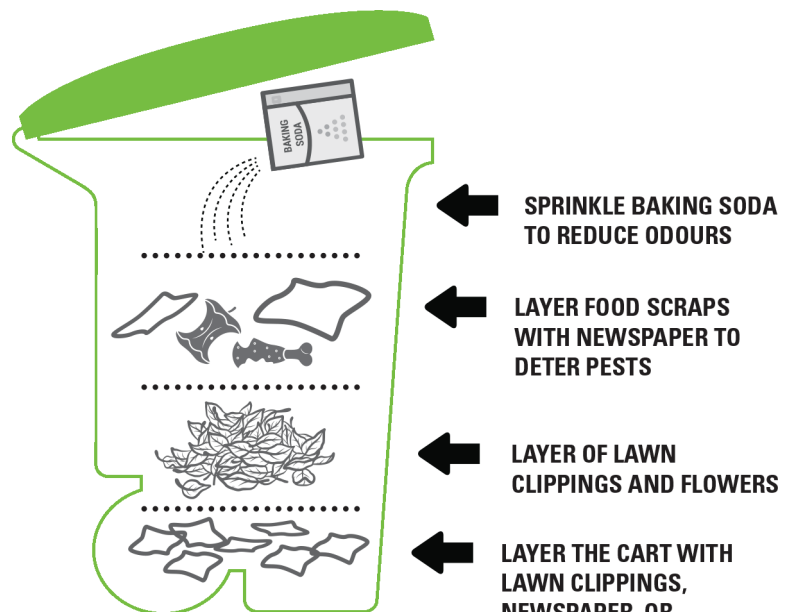


Download the Squamish Curbside Collection app or sign up for collection schedule and electronic reminders at [squamish.ca/collection-schedule](http://squamish.ca/collection-schedule).

## TOTE TIPS

- Keep your recyclables loose, do not bundle or bag them. Shredded paper can be contained in a separate paper bag within the tote.
- Keep plastic bags, soft plastics, and foam packaging out of the recycling tote.
- Empty and rinse all containers.
- Line your kitchen catcher with newspaper or a paper bag. Wash it by hand with dish soap or in the dishwasher.
- Allow grass clippings and leaves to dry before putting them into the organics tote.
- Do not put compostable or biodegradable plastic bags in your organics tote.
- Do not put glass in your recycling tote.
- Flatten all cardboard boxes before putting them in the tote.
- Keep your tote locked at all times except on the morning of your collection day.
- Place your tote curbside by 8 a.m. on the morning of your collection day, never the night before.

## ODOR REDUCING TIPS



- ← SPRINKLE BAKING SODA TO REDUCE ODOURS
- ← LAYER FOOD SCRAPS WITH NEWSPAPER TO DETER PESTS
- ← LAYER OF LAWN CLIPPINGS AND FLOWERS
- ← LAYER THE CART WITH LAWN CLIPPINGS, NEWSPAPER, OR CARDBOARD TO ABSORB MOISTURE AND KEEP THE CART CLEAN

**DO NOT** line the bottom of your cart with plastic compostable or biodegradable bags.



# WHAT GOES WHERE

These items are not accepted in the curbside collection programs.

|  | GFL Recycle Depot | Squamish Landfill | London Drugs | Bottle Depot | ASM | Nesters Market | Newport Auto | Triton Automotive | BC Liquor Store | RONA Squamish | Save-On-Foods | Pharmacies | Squamish Rebuild | Walmart | Kal Tire | Harold's Auto Recycling |
|--|-------------------|-------------------|--------------|--------------|-----|----------------|--------------|-------------------|-----------------|---------------|---------------|------------|------------------|---------|----------|-------------------------|
| Antifreeze   |                   |                   |              |              |     |                |              | ●                 |                 |               |               |            |                  |         |          | ●                       |
| Rechargeable & Single-Use Batteries                  | ●                 |                   | ●            |              |     | ●              | ●            | ●                 |                 |               | ●             |            |                  |         |          |                         |
| Automotive Batteries                                 | ●                 | ●                 |              |              |     |                |              |                   |                 |               |               |            |                  |         |          | ●                       |
| Beverage Containers                                  |                   |                   |              | ●            |     |                |              |                   | ●               |               | ●             |            |                  |         |          |                         |
| Cardboard (Large quantities)                         | ●                 | ●                 |              |              |     |                |              |                   |                 |               |               |            |                  |         |          |                         |
| Cartridges (ink & laser)                             |                   |                   | ●            |              |     |                |              |                   |                 |               |               |            |                  |         |          |                         |
| Cellphones   |                   |                   | ●            |              |     | ●              |              |                   |                 |               |               |            |                  |         |          |                         |
| Construction & Building Materials                    |                   | ●                 |              |              |     |                |              |                   |                 |               |               |            | ●                |         |          |                         |
| Electronics  |                   | ●                 |              | ●            |     |                |              |                   |                 |               |               |            |                  |         |          |                         |
| Fire Extinguishers                                   |                   | ●                 |              |              | ●   |                |              |                   |                 |               |               |            |                  |         |          |                         |
| Flexible Packaging**                                 | ●                 |                   | ●            |              |     |                |              |                   |                 |               |               |            |                  |         |          |                         |
| Broken & Unusable Furniture                          |                   | ●                 |              |              |     |                |              |                   |                 |               |               |            |                  |         |          |                         |
| Glass  | ●                 | ●                 |              |              |     |                |              |                   |                 |               |               |            |                  |         |          |                         |
| Lightbulbs & Tubes                                   |                   |                   | ●            |              | ●   |                |              |                   |                 | ●             |               |            |                  |         |          |                         |
| Light Fixtures, Christmas Lights, & Lamps            | ●                 | ●                 |              |              |     |                |              |                   |                 |               |               |            | ●                |         |          |                         |
| Commercial Lights                                    |                   |                   |              |              | ●   |                |              |                   |                 |               |               |            |                  |         |          |                         |
| Major Appliances                                     |                   | ●                 |              |              | ●   |                |              |                   |                 |               |               |            |                  |         |          |                         |
| Mattresses & Box Springs                             |                   | ●                 |              |              |     |                |              |                   |                 |               |               |            |                  |         |          |                         |
| Medication & Used Needles                            |                   |                   | ●            |              |     |                |              |                   |                 |               |               | ●          |                  | ●       |          |                         |
| Motor Oil, Filters & Containers                      |                   |                   |              |              |     |                |              | ●                 |                 |               |               |            |                  |         |          | ●                       |
| Outdoor Power Equipment                              |                   | ●                 |              |              | ●   |                |              |                   |                 |               |               |            |                  |         |          |                         |
| Paint & Paint Cans                                   | ●                 | ●                 |              |              |     |                |              |                   |                 | ●             |               |            |                  |         |          |                         |
| Plastic Bags   | ●                 | ●                 | ●            |              |     | ●              |              |                   |                 |               |               |            |                  | ●       |          |                         |
| Propane Tanks & Green Camping Fuel Containers        |                   | ●                 |              |              | ●   |                |              |                   |                 |               |               |            |                  |         |          |                         |
| Small Appliances & Power Tools                       | ●                 | ●                 |              |              |     |                |              |                   |                 |               |               |            |                  |         |          |                         |
| Smoke & CO2 Alarms                                   | ●                 |                   | ●            |              |     |                |              |                   |                 |               |               |            |                  |         |          |                         |
| Solvents, Gasoline, Pesticides & Flammable Materials | ●                 | ●                 |              |              |     |                |              |                   |                 |               |               |            |                  |         |          |                         |
| Styrofoam  | ●                 | ●                 | ●            |              |     |                |              |                   |                 |               |               |            |                  |         |          |                         |
| Thermostats  |                   |                   |              |              |     |                | ●            |                   |                 |               |               |            |                  |         |          |                         |
| Tires  |                   | ●                 |              |              |     |                | ●            |                   |                 |               |               |            |                  | ●       | ●        |                         |
| Wood Waste   |                   | ●                 |              |              |     |                |              |                   |                 |               |               |            |                  |         |          |                         |

\*Please note this list is subject to change. Check online for our most up-to-date resources.

\*\* For a detailed list, visit: [recyclebc.ca/flexiblepackaging](http://recyclebc.ca/flexiblepackaging)

## QUEENS WAY RECYCLING DEPOT

38950 Queens Way  
Squamish, BC

### HOURS OF OPERATION\*

MONDAY - SATURDAY 8:30 a.m. - 4:30 p.m.

SUNDAY CLOSED

\*Closed Christmas Day and New Years Day.

## SQUAMISH LANDFILL & RECYCLING DEPOT

Landfill Rd  
Squamish, BC

### HOURS OF OPERATION\*

DAILY 9 a.m. - 6 p.m.

\*Closed Christmas Day and New Years Day.

## SQUAMISH BOTTLE DEPOT

38927 Queens Way #15  
Squamish, BC

### HOURS OF OPERATION

TUESDAY - SUNDAY 9 a.m. - 5 p.m.

MONDAY CLOSED



## ITEM NOT LISTED?

Search for an item using the new **Waste Wizard** look up tool available through the Squamish Curbside Collection app or at [squamish.ca/collection-schedule](http://squamish.ca/collection-schedule).

