



Public Open House #1 Summary Report

Future Development of the Eastern Ontario
Waste Handling Facility

GFL Environmental Inc.

Moose Creek, Ontario

February 20, 2020





Contents

1	Background	1
2	Overview of Public Open House #1	1
3	Notifications	2
	3.1 Public and Agency Notification.....	2
	3.2 Indigenous Community Notification.....	2
4	Venue and Attendance.....	2
5	Information Presented	3
6	Summary of Comments/Issues	3

Tables

Table 1. Summary of Comments Received from Public Comment Forms	4
---	---

Appendices

Appendix A. Notice of Public Open House	A-1
Appendix B. Example of Letters to Agencies, Municipalities, and Organizations.....	B-1
Appendix C. Public and Agency Mailing List.....	C-1
Appendix D. Newspaper Advertisements	D-1
Appendix E. Example of Letters to Indigenous Communities.....	E-1
Appendix F. Indigenous Community Mailing List.....	F-1
Appendix G. Completed Sign-In Sheet	G-1
Appendix H. Open House Poster Boards	H-1
Appendix I. Public Comment Form	I-1
Appendix J. Completed Public Comment Forms	J-1



This page is intentionally left blank.

1 Background

GFL Environmental Inc., the owner and operator of the existing Eastern Ontario Waste Handling Facility (EOWHF) in Moose Creek, Ontario, has initiated an Environmental Assessment (EA) seeking approval for the future development of the EOWHF in order to continue providing landfill disposal capacity over the long term. The lands being considered for the future development include lands within the existing EOWHF and the eastern half of Lot 16, Lots 14 and 15, and part of Lot 13 of Concession 10 east of the EOWHF, which has an area of approximately 233 hectares.

The EOWHF is located within the Township of North Stormont, approximately 5 km north-northwest of the village of Moose Creek, Ontario, and 5 km east of the village of Casselman, Ontario. The purpose of the EA is to assess the potential effects of the proposed future development on the environment.

The EA will be carried out in accordance with the requirements of the *Environmental Assessment Act* (EAA) and the Terms of Reference (ToR) for the project. The ToR will set out the proponent's framework and work plan for addressing the EAA requirements when preparing the EA, including the public consultation and engagement activities that will be carried out. Two public open houses are proposed to support the development of the ToR for the project.

Public and agency consultation and Indigenous engagement are an essential part of the EA process. Consultation and engagement activities such as public open houses provide the opportunity to meet the project team, learn more about the project, and ask questions and provide comments regarding the project. This report provides a summary of Public Open House #1 for the ToR, which was carried out on January 30, 2020.

2 Overview of Public Open House #1

Public Open House #1 was held to introduce and provide an overview of the project, discuss the development and contents of the ToR, present the EA process, and provide information on the proposed alternatives being considered, the EA evaluation process and criteria, and the consultation process that will be followed during the development of the ToR and EA.

The Open House was organized in an information session format with poster boards displayed around the periphery of the room in both English and French. GFL staff and consultant, including bilingual staff members, were available to discuss the information poster boards, receive comments and answer questions. As members of the public arrived, they were asked to sign-in and were then given a comment form which included questions regarding the information presented. The members of the public were given the option of filling out the forms on-site or returning their comments via mail, email or fax to the project team.

3 Notifications

3.1 Public and Agency Notification

Agencies and members of the public, including neighbouring property owners, were notified of Public Open House # 1 via the Notice of Commencement and Public Open House (the Notice). A copy of the Notice, in English and French, is provided in **Appendix A**.

The Notice, in both English and French, was sent via regular mail to agencies, municipalities, organizations, and neighbouring property owners on January 13, 2020. Letters providing a brief overview of the project and an invitation to Public Open House #1 were addressed to agencies, municipalities, and organizations, and were sent along with the Notice via regular mail on January 13, 2020. Letters were sent in either English and/or French depending on the requirements of the recipient. Examples of the letters are provided in **Appendix B**.

One Notice (in English and French) was sent to a member of the public via email on January 15, 2020 because a regular mailing address was unavailable. One Notice (in English and French) and the accompanying letter (in English) was sent again via mail on February 4, 2020 because of a correction to the recipient's mailing address. The mailing list of agencies, municipalities, organizations, and neighbouring property owners that received notification is provided in **Appendix C**.

The Notice was published in both English and French in two local newspapers: the Cornwall Standard-Freeholder on January 15 and 16, 2020; and Le Reflet – The News on January 16, 2020. Copies of the newspaper advertisements are provided in **Appendix D**.

A copy of the Notice, in both English and French, was uploaded to the project website (<http://gflenv.com/moose-creek-eowhf>) on January 15th, 2020.

3.2 Indigenous Community Notification

Indigenous communities and groups were notified of Public Open House #1 via the Notice. Letters (**Appendix E**) providing a brief overview of the project and an invitation to Public Open House #1 were addressed to the Indigenous communities and groups and were sent along with English and French versions of the Notice via registered mail on January 13, 2020. Letters were sent in either English and/or French depending on the requirements of the recipient. The mailing list of Indigenous communities that received notification is provided in **Appendix F**.

4 Venue and Attendance

Public Open House #1 took place on Thursday, January 30, 2020 at the Moose Creek Recreation Centre, 4 St Polycarp Street, Moose Creek, Ontario from 4 p.m. to 8 p.m. The Open House was organized to allow attendees to circulate around the room, review the information on the poster boards and ask questions of GFL staff and consultants.

Based on the completed sign-in sheet (**Appendix G**), the open house was attended by 49 people in addition to GFL and consulting staff.

GFL staff included:

- Daniel Brien, V.P. Environmental Compliance;
- Greg van Loenen, Environmental Compliance Officer;
- Greg Westley, Landfill Supervisor; and
- Rosemary Theriault, Health & Safety Coordinator

The Consulting Team included:

- Larry Fedec, HDR (Project Manager).

5 Information Presented

Information was presented in both English and French on 42 large poster boards displayed around the room (21 in each language). A copy of the poster boards in both languages is provided in **Appendix H**. The information presented included:

- an overview of GFL;
- background information on the EOWHF;
- a description of the proposed project;
- an overview of the EA process;
- the rationale for the project and alternatives being considered
- the proposed EA evaluation process and evaluation criteria;
- an overview of the general study areas to be considered and supporting studies to be carried out;
- proposed consultation and engagement activities; and
- a list of next steps and GFL contact information.

A copy of the Open House poster boards, in both English and French, was uploaded to the project website on February 4, 2020. The project website can be found at: <http://gflenv.com/moose-creek-eowhf>.

6 Summary of Comments/Issues

As members of the public arrived at the open house, they were given a comment form in either English or French (**Appendix I**) which included questions regarding the information presented. The members of the public were given the option of filling out the form on-site or returning their comments via mail, email or fax to the project team. Completed comment forms were requested by February 14, 2020.

Seventeen (17) comment forms were received prior to February 14, 2020. The comments received are summarized in **Table 1**. Comments will be considered in the

development of the ToR and EA, and written responses will be included in the Record of Consultation for the ToR as appropriate. Copies of the completed comment forms are included in **Appendix J**.

Table 1. Summary of Comments Received from Public Comment Forms

1. My interest in the project is: (please check all that apply)			
12	residential property	11	air quality (dust, noise, odour)
3	business	4	ecology
0	member of interest group	5	groundwater, surface water
0	agency representative	3	land use / visual
3	other: Municipality, neighbouring municipality, adjoining landowner	3	transportation

2. Please provide any **general comments** about the information presented at this Public Open House.

A total of 16 responses were received to this question. General comments submitted through the comment forms were generally positive regarding the information presented at the Open House. General comments included the following:

- requests for the information to be provided online;
- request for a tour of the EOWHF;
- request for a presentation format at the next Open House;
- land use and development of adjacent lands;
- odour issues at various locations in the area surrounding the EOWHF including Casselman and associated effects on living standards and property values;
- job creation and future methane use;
- consideration of incineration as an alternative to be considered; and
- traffic on nearby roadways (e.g., Highway 138).

3. Do you have any additional comments, concerns or recommendations regarding the **current operations at the EOWHF**? (Yes/No)

A total of 13 responses were received to this question (8 yes, 5 no). The responses received were related to the existing perceived odours from the EOWHF, requests to manage existing odours prior to future development, and the number of large trucks and trailers travelling past existing residences.

4. After reviewing the information presented at this Public Open House, do you have any additional comments, concerns, or recommendations regarding the **rationale for the proposed project**? (Yes/No)

A total of 12 responses were received to this question (5 yes, 7 no). The responses received noted the need for future landfill development based on the expanding population in eastern Ontario, requested consideration of newer technologies for waste disposal rather than burying waste, and noted concern with the current effects of the EOWHF and how these effects could change as a result of future development, including perceived odour issues.



<p>5. Do you have any specific comments, concerns, or recommendations regarding the Alternatives Presented? (Yes/No)</p>
<p>A total of 11 responses were received to this question (6 yes, 5 no). The responses received were generally related to the following:</p> <ul style="list-style-type: none">• consideration of incineration as an alternative to future development;• potential noise and odour effects on users of Highways 138 and 417 resulting from development closer to Highway 138;• the use of Road 700 (Concession Road 7);• maintaining the visual aesthetics of the site and consideration of tree planting as visual screening;• alternatives that will slow development toward the south end of the site; and• odour effects of the future development.
<p>6. Do you have any specific comments, concerns, or recommendations regarding the Evaluation Criteria to be used in the assessment of the Alternatives as presented? (Yes/No)</p>
<p>A total of 11 responses were received to this question (3 yes, 8 no). The responses received were related to the effects of the eastward development on the future operations of Manderley Turf Products, and the consideration of a demonstrated reduction in existing odours prior to future development.</p>
<p>7. Do you have any comments or questions regarding our proposed consultation program? (Yes/No)</p>
<p>A total of 10 responses were received to this question (3 yes, 7 no). The responses received were related to the following:</p> <ul style="list-style-type: none">• provision of information that is easily accessible and fully transparent;• consideration of the length of time for previous ToR approvals in the proposed schedule;• effects on local businesses and tourism resulting from perceived existing and potential future odour issues; and• the formation of a consultation committee made up of residents and volunteer groups to further involve the host community.
<p>8. Are there any other issues that you feel GFL should consider in the development of the Terms of Reference? (Yes/No)</p>
<p>A total of 7 responses were received to this question (3 yes, 4 no). The responses received were related to the following:</p> <ul style="list-style-type: none">• concern about the effect of the future development on property values;• identification of the number of other landfills in eastern Ontario that will be closing in the next 5 years and from 2025-2045; and• the development of a plan to produce natural gas for heating in partnership with gas consortium providers to bring this utility to the surrounding area.

Verbal comments received at the Open House were addressed by staff as they were received. These comments were largely focused on landfill odours associated with the fugitive release of landfill gas, benefits to the community (Moose Creek and the broader area), recycling and waste diversion provided at the facility, alternative technologies and truck traffic. In response to these comments, GFL provided information to attendees on the work completed over the past two years and now underway at the site to expand and enhance the landfill gas collection system, along with the schedule for this work to be completed, as part of an overall plan to minimize future off-site odours. GFL's role in the community was discussed in terms of financial contributions, direct jobs, purchase of goods and services, and general community support. The future development of the EOWHF has the potential to support additional benefits including the introduction of natural gas service to the area and new business opportunities like greenhouses. An overview of the types of waste diversion options available through GFL were discussed

as was the potential to support the local community with these programs. The applicability of thermal treatment technologies to the waste streams managed at the EOWHF and how this would be considered in the ToR was described. With respect to truck traffic, no change in traffic volumes is anticipated and a traffic study will be completed as part of the EA.

As a follow up to requests made by some attendees at the Open House, GFL is planning to conduct tours of the EOWHF May/June 2020 when site conditions are more accessible. GFL will provide a sign-up sheet at the next Open House event and contact interested persons who provided contact information. It is anticipated that the tour will include the composting facility and waste diversion (electronics, metals) areas, the new pollinator garden, future development area, any landfill gas collection system construction underway, the landfill working areas, landfill gas to energy plant, compost facility, and leachate treatment plant.



Appendix A. Notice of Public Open House

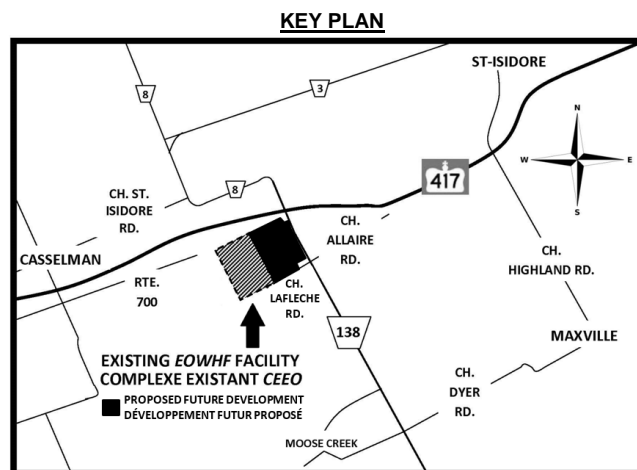
Notice of Commencement and Public Open House Terms of Reference for an Environmental Assessment Future Development of the Eastern Ontario Waste Handling Facility

GFL Environmental Inc., the owner and operator of the existing *Eastern Ontario Waste Handling Facility* (EOWHF) in Moose Creek, Ontario, has initiated an Environmental Assessment (EA) seeking approval for the future development of the EOWHF. The future development will involve the construction of additional landfill disposal capacity. GFL has determined that there is a sustainable business opportunity and need for the EOWHF to continue to provide disposal capacity over the long term. By developing this additional disposal capacity, GFL will also be able to continue providing economical waste diversion and green bin organics composting services to customers into the future. The EOWHF is a major employer and financial contributor to the local community. The development of an additional 15.1 million cubic metres of disposal capacity over a 20 year planning period will allow GFL to continue to provide this type of economic support to the local community. No changes to the approved fill rates or site access routes are proposed.

The EOWHF is located within the Township of North Stormont, approximately 5 kilometres north-northwest of the village of Moose Creek, Ontario, and 5 kilometres east of the village of Casselman, Ontario. The proposed future development will be on land currently owned or to be owned by GFL, and may include an area of the existing EOWHF if necessary. The location of the existing EOWHF and the proposed future development are shown on the Key Plan below. The purpose of the EA is to assess the potential effects of the future development on the environment.

The Process

The EA will be carried out in accordance with the requirements of the *Environmental Assessment Act*. The first step in the process is the preparation of a Terms of Reference. The Terms of Reference will set out the proponent's framework and work plan for addressing the *Environmental Assessment Act* requirements when preparing the EA, including such things as the alternatives that will be considered and the public consultation activities that will be carried out. If approved by the Minister, the Terms of Reference will provide the framework and requirements for the preparation of the EA.



Consultation

Members of the public, agencies, Indigenous communities and other interested persons are encouraged to actively participate in the planning process by attending consultation opportunities or contacting staff directly with comments or questions. Consultation opportunities are planned throughout the planning process and will be advertised in local newspapers, on the project website www.gflenv.com/moose-creek-eowhf and by direct and/or electronic mail (email).

A **Public Open House** to introduce the project, discuss the development and contents of the Terms of Reference, the EA process, and the consultation process that will be followed during the development of the EA is scheduled for **Thursday, January 30th, 2020** at the **Moose Creek Recreation Centre, 4 St Polycarp St, Moose Creek, ON** from **4 p.m. to 8 p.m.**

You are encouraged to attend and participate in helping us identify issues, interests or ideas to be addressed in the EA. In addition to attending the Public Open House, you are invited to submit your comments by mail, email, or fax to the contact for the project provided below. If you would like to be added to the project mailing list or have project-related questions, please contact:

Mr. Greg van Loenen, Environmental Compliance Officer
GFL Environmental Inc.
17125 Lafleche Road, Moose Creek, Ontario K0C 1W0
Telephone: 613-538-2776 ext. 223
Fax: 613-538-2779
Email: gvanloenen@gflenv.com

All personal information included in a submission – such as name, address, telephone number and property location – is collected, maintained and disclosed by the Ministry of the Environment, Conservation and Parks for the purposes of transparency and consultation. The information is collected under the authority of the Environmental Assessment Act or is collected and maintained for the purpose of creating a record that is available to the general public as described in s.37 of the Freedom of Information and Protection of Privacy Act. Personal information you submit will become part of a public record that is available to the general public unless you request that your personal information remain confidential. For more information, please contact the Ministry of the Environment, Conservation and Parks' Freedom of Information and Privacy Coordinator at 416-327-1434.

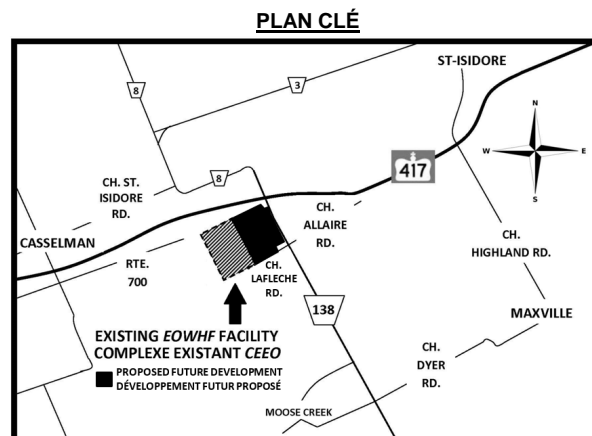
Avis de commencement et portes ouvertes Cadre de référence pour une évaluation environnementale Développement du futur centre de traitement des déchets de l'est de l'Ontario

GFL Environmental Inc., propriétaire et exploitant de l'actuel centre de traitement des déchets de l'est de l'Ontario (EOWHF) à Moose Creek, en Ontario, a entrepris une évaluation environnementale (EE) en vue d'obtenir l'approbation pour le futur développement du EOWHF. Le futur développement comprendra la construction d'une capacité supplémentaire d'élimination du site d'enfouissement. GFL a déterminé qu'il y a une occasion d'affaires durable et que l'EOWHF doit continuer à fournir une capacité d'élimination à long terme. En développant cette capacité d'élimination supplémentaire, GFL sera également en mesure de continuer à fournir des services de réduction de déchets et de compostage des matières organiques à ses clients. L'EOWHF est un employeur et un contributeur financier important pour la communauté locale. Le développement d'une capacité d'élimination supplémentaire de 15,1 millions de mètres cubes sur une période de planification de 20 ans permettra à GFL de continuer à fournir ce type de soutien économique à la collectivité locale. Aucun changement au volume d'enfouissement autorisé ou aux routes d'accès au site n'est proposé.

L'EOWHF est situé dans le canton de North Stormont, à environ 5 kilomètres au nord-nord-ouest du village de Moose Creek, en Ontario, et à 5 kilomètres à l'est du village de Casselman, en Ontario. Le futur développement proposé sera situé sur des terrains qui appartiennent actuellement ou qui seront détenus par GFL, et pourrait inclure une zone de l'EOWHF existant si nécessaire. L'emplacement de l'EOWHF existant et le futur développement proposé sont indiqués dans le Plan clé ci-dessous. L'EE a pour objet d'évaluer les effets potentiels du futur développement sur l'environnement.

Le processus

L'EE sera effectuée conformément aux exigences de la Loi sur l'évaluation environnementale. La première étape du processus est la préparation du cadre de référence. Le cadre de référence établira le cadre de travail et le plan de travail du promoteur pour répondre aux exigences de la Loi sur l'évaluation environnementale au moment de préparer l'EE, y compris les solutions de rechange qui seront envisagées et les activités de consultation publique qui seront menées. Si le ministre l'approuve, le cadre de référence fournira le cadre et les exigences pour la préparation de l'EE.



Consultation

Les membres du public, les organismes, les communautés autochtones et les autres personnes intéressées sont encouragées à participer activement au processus de planification en assistant aux consultations ou en communiquant directement avec le personnel pour lui faire part de leurs commentaires ou leurs questions. Des possibilités de consultation sont prévues tout au long du processus de planification et seront annoncées dans les journaux locaux, sur le site Web du projet www.gflenv.com/moose-creek-eowhf et par courrier direct et/ou électronique (courriel).

Une **journée portes ouvertes** pour présenter le projet, discuter de l'élaboration et du contenu du mandat, du processus d'EE et du processus de consultation qui sera suivi pendant l'élaboration de l'EE est prévue pour **le jeudi 30 janvier 2020 au Moose Creek Recreation Centre, 4 St Polycarp St, Moose Creek, ON de 16 h à 20 h.**

Nous vous encourageons à y assister et à participer afin de nous aider à cerner les enjeux, les intérêts ou les idées à aborder dans l'EE. En plus d'assister à la journée portes ouvertes, nous vous invitons à envoyer vos commentaires par la poste, par courriel ou par télécopieur à la personne-ressource du projet indiquée ci-dessous. Si vous souhaitez être ajouté à la liste de diffusion du projet ou si vous avez des questions liées au projet, veuillez communiquer avec :

M. Greg van Loenen, agent de conformité environnementale
GFL Environmental Inc.
17125, chemin Lafleche, Moose Creek (Ontario) K0C 1W0
Téléphone : 613-538-2776 ext. 223
Télécopieur : 613-538-2779
Courriel : gvanloenen@gflenv.com

Tous les renseignements personnels inclus dans une présentation – comme le nom, l'adresse, le numéro de téléphone et l'emplacement de la propriété – sont recueillis, conservés et communiqués par le ministère de l'Environnement, Conservation et Parc à des fins de transparence et de consultation. Les renseignements sont recueillis en vertu de la Loi sur l'évaluation environnementale ou sont recueillis et conservés aux fins de la création d'un document accessible au grand public conformément à l'article 37 de la Loi sur l'accès à l'information et Loi sur la protection de la vie privée. Les renseignements personnels que vous soumettez seront versés dans un dossier public qui est accessible au grand public, à moins que vous ne demandiez que vos renseignements personnels demeurent confidentiels. Pour de plus amples renseignements, veuillez communiquer avec le coordonnateur de l'accès à l'information et de la protection des renseignements personnels du ministère de l'Environnement, de la Conservation et des Parcs au 416-327-1434.



Appendix B. Example of Letters to Agencies, Municipalities, and Organizations



January 15, 2020

[Name]
[Address]

Dear [Name],

Subject: GFL Environmental Inc. Notice of Commencement and Public Open House Terms of Reference for an Environmental Assessment – Future Development of the Eastern Ontario Waste Handling Facility

On behalf of GFL Environmental Inc., I would like to inform you that we are commencing an Environmental Assessment (EA) seeking approval for the future development of our existing Eastern Ontario Waste Handling Facility (EOWHF) in Moose Creek, Ontario. GFL has determined that there is a sustainable business opportunity and need for the EOWHF to continue to provide landfill disposal capacity over the long term.

The EOWHF is located within the Township of North Stormont, approximately 5 kilometres north-northwest of the village of Moose Creek, Ontario, and 5 kilometres east of the village of Casselman, Ontario. The proposed future development will be on land currently owned or to be owned by GFL, and may include an area of the existing EOWHF if necessary. The location of the existing EOWHF and the proposed future development are shown in the attached Notice.

A copy of the Notice of Commencement and Public Open House for the Terms of Reference, which is the initial step in the EA process, is attached. The purpose of the EA is to assess the potential effects of the proposed future development on the environment. The EA will be carried out in accordance with the requirements of the *Environmental Assessment Act* (EAA).

We invite you to attend a **Public Open House** to introduce the project, and discuss the development and contents of the ToR, the EA process and the consultation process that will be followed during the development of the EA. The **Public Open House** is scheduled for **Thursday January 30th, 2020** at the **Moose Creek Recreation Centre, 4 St Polycarp St, Moose Creek, Ontario** from **4 p.m. to 8 p.m.** We hope that your schedule will permit you to attend.

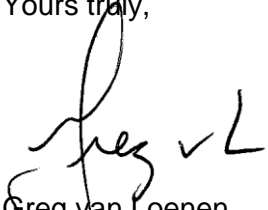
You are encouraged to participate in helping us identify issues, interests or ideas to be addressed throughout the EA. We will continue to keep you updated on our EA and request your input through consultation events, the project website www.gflenv.com/moose-creek-eowhf and by mail, email or fax.



Members of the public, agencies, Indigenous communities and other interested persons are encouraged to continue to actively participate in the planning process by attending consultation opportunities or contacting staff directly with comments or questions.

If you have any questions regarding our project or the ToR, please do not hesitate to contact me at anytime.

Yours truly,



Greg van Loenen
Environmental Compliance Officer
Telephone: (613) 538-2776 ext. 223
Email: gvanloenen@gflenv.com

Attachment: Notice of Commencement and Public Open House Terms of Reference for an Environmental Assessment – Future Development of the Eastern Ontario Waste Handling Facility





15 janvier 2020

[Nom]

[Adresse]

Cher [Nom],

**Objet : GFL Environmental Inc. Avis de commencement et portes ouvertes
Cadre de référence pour une évaluation environnementale – Futur
développement de l'installation de manutention des déchets de l'Est de l'Ontario**

Au nom de GFL Environmental Inc., j'aimerais vous informer que nous entreprenons une évaluation environnementale (EE) en vue de l'approbation de l'aménagement futur de notre installation de traitement des déchets de l'Est de l'Ontario (EOWHF) à Moose Creek, en Ontario. GFL a déterminé qu'il y a une occasion d'affaires durable et que le EOWHF doit continuer à fournir une capacité d'élimination des sites d'enfouissement à long terme.

L'EOWHF est situé dans le canton de North Stormont, à environ 5 kilomètres au nord-nord-ouest du village de Moose Creek, en Ontario, et à 5 kilomètres à l'est du village de Casselman, en Ontario. Le futur développement proposé portera sur des terres qui appartiennent actuellement ou qui seront détenues par GFL, et pourrait inclure une zone de l'EOWHF existant si nécessaire. L'emplacement de l'EOWHF actuel et du projet de futur développement sont indiqués dans l'avis ci-joint.

Vous trouverez ci-joint une copie de l'avis de lancement et la journée portes ouvertes du mandat, qui constitue l'étape initiale du processus d'EE. L'EE a pour objet d'évaluer les effets potentiels du futur développement proposé sur l'environnement. L'EE sera effectuée conformément aux exigences de la Loi sur l'évaluation environnementale (LEE).

Nous vous invitons à assister à une **journée portes ouvertes** afin de vous présenter le projet et discuter de l'élaboration et du contenu du mandat, du processus d'EE et du processus de consultation qui sera suivi pendant l'élaboration de l'EE. La **journée portes ouvertes** est prévue pour le **jeudi 30 janvier 2020 au Moose Creek Recreation Centre, 4 St Polycarp St, Moose Creek, Ontario de 16 h à 20 h**. Nous espérons que votre horaire vous permettra d'y assister.

Nous vous encourageons à participer à la détermination des enjeux, des intérêts ou des idées à aborder tout au long de l'EE. Nous continuerons de vous tenir au courant de notre évaluation environnementale et de vous demander votre avis au moyen d'activités de consultation, sur le site Web du projet www.gflenv.com/moose-creek-eowhf et par la poste, par courriel ou par télécopieur.



Membres du public, les organismes, les collectivités autochtones et les autres personnes intéressées sont encouragés à continuer de participer activement au processus de planification en assistant aux consultations ou en communiquant directement avec le personnel pour lui faire part de leurs commentaires ou de leurs questions.

Si vous avez des questions concernant notre projet ou le mandat, n'hésitez pas à communiquer avec moi en tout temps.

Je vous en prie,



Greg van Loenen
Agent de conformité environnementale
Téléphone : (613) 538-2776 ext. 223
Courriel : gvanloenen@gflenv.com

Pièce jointe : Avis de commencement et portes ouvertes sur le mandat d'une évaluation environnementale – futur développement de l'installation de manutention des déchets de l'est de l'Ontario





Appendix C. Public and Agency Mailing List

Agency Mailing List

Organization/Company	Name	Title	Address	City	Province	Postal Code	Email	Phone Number
Ministry of Agriculture, Food and Rural Affairs	Mr. David Cooper	Manager, Land Use Policy & Stewardship - Food Safety and Environmental Policy Branch	1 Stone Road W, 3 rd Floor	Guelph	ON	N1G 4Y2	david.cooper@ontario.ca	519-826-3117
Ministry of Agriculture, Food and Rural Affairs	Ms. Michele Doncaster	Policy Advisor - Land Use Policy & Stewardship	1 Stone Road W, 3 rd Floor	Guelph	ON	N1G 4Y2	michele.doncaster@ontario.ca	519-826-4369
Ministry of Agriculture, Food and Rural Affairs	Mr. John O'Neill	Rural Planner, Environmental Land Use Policy - Food Safety and Environmental Policy Branch	59 Ministry Road, 1st Floor, Box 2004, ORC Building	Kemptville	ON	K0G 1J0	john.o'neill@ontario.ca	613-258-8341
Ministry of Tourism, Culture and Sport	Ms. Karla Barboza	Team Lead(A), Heritage Planning Unit, Programs and Services Branch	401 Bay Street, Suite 1700	Toronto	ON	M7A 0A7	karla.barboza@ontario.ca	416-314-7120
Ministry of Tourism, Culture and Sport	Ms. Kimberly Livingstone	Heritage Planner (A), Heritage Program Unit - Programs and Services Branch	401 Bay Street, Suite 1700	Toronto	ON	M7A 0A7	kimberley.livingstone@ontario.ca	416-314-7133
Ministry of Education	Mr. Paul Bloye	Director, Capital Program Branch, Capital and Business Support Division	315 Front Street W, 15th Floor	Toronto	ON	M7A 0B8	paul.bloye@ontario.ca	416-325-8689
Ministry of Community Safety and Correctional Services	Mr. Robert Greene	Director	13th Floor, 25 Grosvenor Street	Toronto	ON	M7A 2G8	robert.greene@ontario.ca	416-314-6683
Ontario Provincial Police	Ms. Gillian Lee	Manager(A), Research & Program Evaluation Unit / Research Planning & Analysis Section	777 Memorial Avenue, 1st Floor	Orillia	ON	L3V 7V3	gillian.lee@opp.ca	705-329-7571
Ministry of Economic Development, Job Creation and Trade	Mr. Michael Falconi	Manager(A), Cabinet Office Liaison Unit, Policy Coordination Branch	56 Wellesley Street W, 11th Floor	Toronto	ON	M5S 2S3	michael.falconi@ontario.ca	647-325-9535
Ministry of Economic Development, Job Creation and Trade	Mr. Michael Helfinger	Senior Policy Advisor, Cabinet Office Liaison Unit, Policy Coordination Branch	56 Wellesley Street W, 11th Floor	Toronto	ON	M7A 2E1	michael.helfinger@ontario.ca	416-434-4799
Ministry of Energy, Northern Development and Mines	Mr. Andrea Pastori	Cabinet Liaison and Strategic Policy Branch Coordinator, Strategic Policy and Analytics Branch	77 Grenville St., 6th Floor	Toronto	ON	M7A 1B3	andrea.pastori@ontario.ca	416-327-7276
Ministry of Municipal Affairs & Housing	Mr. Michael Elms	Manager - Eastern Municipal Services Office	8 Estate Lane, Rockwood House	Kingston	ON	K7M 9A8	michael.elms@ontario.ca	613-545-2132
Ministry of Natural Resources and Forestry	Ms. Mary Dillon	District Planner - Kemptville District	10 Campus Drive, Postal Bag 2002	Kemptville	ON	K0G 1J0	mary.dillon@ontario.ca	613-258-8470
Ministry of Energy, Northern Development and Mines	Ms. Mary Perry	Manager (A), Strategic Support Unit	Willet Green Miller Centre, 2nd Floor, 933 Ramsey Lake Road	Sudbury	ON	P3E 6B5	mary.perry@ontario.ca	705-670-3022
Ministry of Energy, Northern Development and Mines	Ms. Clare Pineau	Initiatives Coordinator, Strategic Support Unit	Willet Green Miller Centre, 2nd Floor, 933 Ramsey Lake Road	Sudbury	ON	P3E 6B5	clare.pineau@ontario.ca	705-670-5766
Ministry of Energy, Northern Development and Mines	Ms. Jennifer Paetz	Senior Strategic Initiatives Lead (A), Strategic Support Unit	Willet Green Miller Centre, 2nd Floor, 933 Ramsey Lake Road	Sudbury	ON	P3E 6B5	jennifer.paetz@ontario.ca	705-690-8205
Ministry of Transportation	Mr. Peter Makula	Manager, Engineering Office - Eastern Region	Postal Bag 4000, 1355 John Counter Blvd	Kingston	ON	K7L 5A3	peter.makula@ontario.ca	613-545-4754
Canadian Environmental Assessment Agency	Ms. Anjala Puvananathan	Director, Ontario Region	55 York Street, Suite 600	Toronto	ON	M5J 1R7	anjala.puvananathan@ceaa-acee.gc.ca	416-952-1575
Indigenous Services Canada and Crown-Indigenous Relations and Northern Affairs Canada	Environmental Assessment Coordination	Environment Unit, Lands and Economic Development	25 St. Clair Avenue East, 8th Floor	Toronto	ON	M4T 1M2	eacoordination_ON@aandc-aadnc.gc.ca	
Environment and Climate Change Canada	Mr. Sandro Leonardelli	Manager, Environmental Assessment Section, Environmental Protection Branch - Ontario Region	4905 Dufferin St.	Toronto	ON	M3H 5T4	sandro.leonardelli@canada.ca	416-739-5858
Transport Canada	Mr. David Zeit	Senior Environmental Officer - Ontario Region	4900 Yonge Street	North York	ON	M2N 6A5	david.zeit@tc.gc.ca	416-952-0491
Transport Canada	Mr. Yvon Laroche	Director of Environmental Services - Ottawa International Airport	110 Airport Parkway Private, Suite 2500	Ottawa	ON	K1V 9B4	yvon.laroche@ottawa-airport.ca	613-248-2000
MECP Eastern Regional Office	Peter Taylor	Manager, Technical Support Section	PO Box 22032	Kingston	ON	K7M 8S5	peter.g.taylor@ontario.ca	613-549-4000 ext. 2615
MECP Eastern Regional Office	Victor Castro	Supervisor, Water Resources Unit	PO Box 22032	Kingston	ON	K7M 8S5	victor.castro@ontario.ca	613-540-6862
MECP Eastern Regional Office	Robert Holland	Hydrogeologist	PO Box 22032	Kingston	ON	K7M 8S5	robert.holland@ontario.ca	613-540-6851
MECP Eastern Regional Office	Lauren Forrester	Surface Water Specialist	PO Box 22032	Kingston	ON	K7M 8S5	lauren.forrester@ontario.ca	613-540-6889
MECP Eastern Regional Office	Nancy Orpana	Air Quality Analyst	PO Box 22032	Kingston	ON	K7M 8S5	nancy.orpana@ontario.ca	613-546-9058
MECP Eastern Regional Office	Ruth Orwin	Supervisor - Air, Pesticides and Environmental Planning	1259 Gardiners Road, Unit 3	Kingston	ON	K7P 3J6	ruth.orwin@ontario.ca	613-548-6931
MECP Eastern Regional Office	Richard Raeburn-Gibson	Director	1259 Gardiners Road, Unit 3	Kingston	ON	K7P 3J6	richard.raeburngibson@ontario.ca	613-548-6901
MECP Cornwall Area Office	Terri Forrester	Senior Environmental Officer	113 Amelia Street, Floor 1	Cornwall	ON	K6H 3P1	terri.forrester@ontario.ca	613-933-8562
MECP Cornwall Area Office	Michael Seguin	Area Supervisor	113 Amelia Street, Floor 1	Cornwall	ON	K6H 3P1	michael.seguin@ontario.ca	613-933-2375
MECP Ottawa District Office	Tracy Hart	District Manager	2430 Don Reid Drive, Unit 103	Ottawa	ON	K1H 1E1	tracy.hart@ontario.ca	613-521-3450 ext 224
MECP Environmental Assessment and Permissions Branch	Heather Malcolmson	Director, Environmental Permissions (Acting)	135 St Clair Ave West, 1st Floor	Toronto	ON	M4V 1P5	heather.malcolmson@ontario.ca	416-314-0934
MECP Environmental Assessment and Permissions Branch	Annamaria Cross	Director, Environmental Assessment	135 St Clair Ave West, 1st Floor	Toronto	ON	M4V 1P5	annamaria.cross@ontario.ca	416-314-7967
MECP Environmental Assessment and Permissions Branch	Solange Desautels	Supervisor, Project Coordination - Team 1, Environmental Assessment Services	135 St Clair Ave West, 1st Floor	Toronto	ON	M4V 1P5	solange.desautels@ontario.ca	416-992-5867
MECP Environmental Assessment and Permissions Branch	Adam Sanzo	Project Officer, Project Coordination - Team 1, Environmental Assessment Services	135 St Clair Ave West, 1st Floor	Toronto	ON	M4V 1P5	adam.sanzo@ontario.ca	416-314-8360
MECP Environmental Assessment and Permissions Branch	Mohsen Keyvani	Manager (Acting) - Team 1, Approval Services	135 St Clair Ave West, 1st Floor	Toronto	ON	M4V 1P5	mohsen.keyvani@ontario.ca	416-432-7253
MECP Environmental Assessment and Permissions Branch	Rick Li	Senior Waste Engineer - Team 1, Approvals Services	135 St Clair Ave West, 1st Floor	Toronto	ON	M4V 1P5	rick.li@ontario.ca	416-314-7993
MECP Environmental Assessment and Permissions Branch	Stefanos Habtom	Senior Wastewater Engineer - Team 2, Approvals Services	135 St Clair Ave West, 1st Floor	Toronto	ON	M4V 1P5	stefanos.habtom@ontario.ca	416-314-7284

Public Mailing List

Organization/Company	Name	Title	Address	City	Province	Postal Code	Email	Phone Number
Catholic District School Board of Eastern Ontario	Bernie Kehoe	Manager of Plant and Maintenance		Kemptville	ON	K0G 1J0		
Community Liaison Committee	Gaetan Martin	CLC Member		Moose Creek	ON	K0C 1W0		
Community Liaison Committee/Domar Farms	Alain Legault	CLC Chairman		Moose Creek	ON	K0C 1W0		
Eastern Ontario Health Unit - Head Office	Dr. Paul Roumeliotis	Medical Officer of Health		Cornwall	ON	K6J 5T1		
Raisin Region Conservation Authority	Kim MacDonald	Watershed Planner		Cornwall	ON	K6H 5T2		
Russell Township	Dominique Tremblay	Director of Planning and Building		Embrun	ON	K0A 1W1		
Russell Township	Pierre Leroux	Mayor/Maire		Embrun	ON	K0A 1W1		
South Nation Conservation Authority	James Holland	Watershed Planner		Finch	ON	K0C 1K0		
South Nation Conservation Authority	Pat Piitz	Team Lead, Property		Finch	ON	K0C 1K0		
South Nation Conservation Authority	Geoff Owens	Regulations Officer		Finch	ON	K0C 1K0		
The Nation Municipality	Francois St. Amour	Mayor/Maire		Casselman	ON	K0A 1M0		
The Nation Municipality	Guylain Lafleche	MCIP RPP, Planner		Casselman	ON	K0A 1M0		
The Nation Municipality	Josee Brizard	CAO - Clerk		Casselman	ON	K0A 1M0		
Township of North Stormont	Amy Doyle	Planner		Berwick	ON	K0C 1G2		
Township of North Stormont	Jim Wert	Mayor		Berwick	ON	K0C 1G0		
Township of North Stormont	Roxane Villeneuve	Councillor		Moose Creek	ON	K0C 1W0		
Township of North Stormont	Craig Calder	Chief Administrative Officer / Clerk		Berwick	ON	K0C 1G0		
Township of North Stormont	Paul Hicks	Community Planner		Berwick	ON	K0C 1G0		
Township of North Stormont Fire Services	Dan Gauvin	Fire Chief		Berwick	ON	K0C 1G0		
United Counties of Prescott-Russell	Louis Prévost	Director, Planning and Forestry		L'Orignal	ON	K0B 1K0		
United Counties of Prescott-Russell	Stephane P. Parisien	Chief Administrative Officer		L'Orignal	ON	K0B 1K0		
United Counties of Stormont, Dundas & Glengary	Benjamin deHaan	Director of Transportation and Planning Services		Cornwall	ON	K6J 3P2		
United Counties of Stormont, Dundas & Glengary	Jim McDonell	MPP		Cornwall	ON	K6J 1G5		
United Counties of Stormont, Dundas & Glengary	Helen Thomson	Director of Council Services/Clerk		Cornwall	ON	K6J 3P2		
Upper Canada District School Board	Jeremy Hobbs	Superintendent of Human Resources and Operational Services		Brockville	ON	K6V 5X1		
Municipality of Casselman	Daniel Lafleur	Mayor/Maire		Casselman	ON	K0A 1M0		
Manderley Turf Products - Ottawa (Moose Creek)	Dave Cinnamon	Production Manager		Moose Creek	ON	K0C 1W0		
GEA - Lawrence Dairy Supply	Mike Johnson and Dan Delhey	Owners		Moose Creek	ON	K0C1W0		
St. Lawrence River Institute of Environmental Sciences	Jeff Ridal	Executive Director / Chief Research Scientist		Cornwall	ON	K6H 4Z1		
Ferme Algepie Inc	Gerard Lafleche			Casselman	ON	K0A 1M0		
Ferme Pauline	Paul Lalonde			Casselman	ON	K0A 1M0		
Comcor Environmental Inc.	Shannan McGarr	Wellfield Operations Manager		Cambridge	ON	N1T 1Z6		
Agro-Culture 2001 Inc.				Hawkesbury	ON	K6A 2S8		
Societe de Gestion La Colomb				Hawkesbury	ON	K6A 2S8		
T & P Meyerhans Farm Inc.				Casselman	ON	K0A 1M0		
Champion Mushroom				Moose Creek	ON	K0C 1W0		
Bruno Charbonneau Holding Ltd.				Casselman	ON	K0A 1M0		
F&F Inc.				Casselman	ON	K0A 1M0		
Hugo Michael Frummelt				Casselman	ON	K0A 1M0		
GFL Environmental Inc.				Moose Creek	ON	K0C 1W0		
Lafcorp Inc.				Moose Creek	ON	K0C 1W0		
Ferme Guycalain Inc.				Casselman	ON	K0A 1M0		
Ferme Emile Surprenant & Fil				Casselman	ON	K0A 1M0		
Premier Tech		Operations Manager		St. Isidore	ON	K0C 2B0		
Tyrol Farms Inc.				Casselman	ON	K0A 1M0		
Ferme Hesnoda Inc.				Casselman	ON	K0A 1M0		
Ferme Calande Inc.				Alfred	ON	K0B 1A0		
Maxrelco (Immeubles) Inc				Rigaud	QC	J0P 1P0		
AL Blair Construction Ltd.				Moose Creek	ON	K0C 1W0		

Organization/Company	Name	Title	Address	City	Province	Postal Code	Email	Phone Number
	Aggarwal, Vidyas, In Trust			Ottawa	ON	K2E 1W0		
	Alain & Sylvia Jeanne Jaquemet			Winchester	ON	K0C 2K0		
	Alain Surprenant			Casselman	ON	K0A 1M0		
	Aldeo Mainville			Casselman	ON	K0A 1M0		
	Andre Quirouette			Casselman	ON	K0A 1M0		
	Antoine Newberry			Casselman	ON	K0A 1M0		
	Arnold & Anna Kuratli			St. Isidore	ON	K0C 2B0		
	Christian Surprenant			Casselman	ON	K0A 1M0		
	Denis Denise Huguette			Casselman	ON	K0A 1M0		
	Denis Longtin			Casselman	ON	K0A 1M0		
	Denyse Gour			Casselman	ON	K0A 1M0		
	Emile Leroux			Casselman	ON	K0A 1M0		
	Eric Gareau			Casselman	ON	K0A 1M0		
	Etienne Gour			Casselman	ON	K0A 1M0		
	Francois Lucien Racine			Casselman	ON	K0A 1M0		
	Gerard Lalonde			Casselman	ON	K0A 1M0		
	Gilles Lafleche			St-Albert	ON	K0A 3C0		
	Giovanni J Marini			Casselman	ON	K0A 1M0		
	Herbert Gillingham			Moose Creek	ON	K0C 1W0		
	Jan Van Criecking			Casselman	ON	K0A 1M0		
	Jeanne Trudel			Casselman	ON	K0A 1M0		
	John Garroch			Casselman	ON	K0A 1M0		
	Joseph Edouard Piche			Casselman	ON	K0A 1M0		
	Marc Joseph Robert Seguin			Casselman	ON	K0A 1M0		
	Marc Lemoine			Hawkesbury	ON	K6A 2S8		
	Martin Neveu			Casselman	ON	K0A 1M0		
	Maurice Gour			Casselman	ON	K0A 1M0		
	Monique Neveu			Casselman	ON	K0A 1M0		
	Nathalie Rita Lafleche			Moose Creek	ON	K0C 1W0		
	Nicole Lanthier			Ottawa	ON	K1N 8Y8		
	Patricia Edmond							
	Reinhold Markut			Casselman	ON	K0A 1M0		
	Rheal X Surprenant			Casselman	ON	K0A 1M0		
	Richard & Carole Bray			Moose Creek	ON	K0C 1W0		
	Richard Paul Siriois			Casselman	ON	K0A 1M0		
	Roger Richer			Orleans	ON	K1W 1J1		
	Ronald Sheridan			Casselman	ON	K0A 1M0		
	Shu Lin			Cornwall	ON	K6H 6N2		
	Stephane Racine			Casselman	ON	K0A 1M0		
	Yannick Morin			Moose Creek	ON	K0C 1W0		
	Yvan Seguin			Casselman	ON	K0A 1M0		
	Siegfried Grabs			Moose Creek	ON	K0C 1W0		



Appendix D. Newspaper Advertisements



An RCAC CF-18 takes off in 2018. Ottawa will spend hundreds of millions to keep the fighter jets flying until 2032. THE CANADIAN PRESS FILES

Ottawa to spend hundreds of millions more on CF-18s

LEE BERTHAUME

OTTAWA The federal government is planning to invest hundreds of millions of dollars more to ensure Canada's aging CF-18s can still fight while the country waits for replacement jets, which were originally expected years ago.

The extra money comes after the federal auditor general warned in late 2018 that Canada's fighter jets risked being outmatched by more advanced adversaries due to a lack of combat upgrades since 2008 and will result in new weapons, sensors and defensive systems for the fleet.

Royal Canadian Air Force commander Lt.-Gen. Al Meinzinger estimated the added cost will be around \$800 million, which is on top of the \$3 billion the government has already set aside to extend the lives of the CF-18s and purchase 18 second-hand fighter jets from Australia.

"Canada has a history of upgrading their fighter aircraft," Meinzinger said in a recent interview with The Canadian Press. "It's a consequence of the fact that over time, threats... advance as technology advances."

Thirty-six out of the air force's 76 CF-18s and 18 soon-to-be-delivered second-hand Australian F-18s will receive the full suite of upgrades.

The air force did not initially plan any upgrades to the CF-18s' combat systems after 2008 because it expected to retire the last of the fleet by 2020, when a new fleet of jets was to have taken over.

Instead, thanks to how successive governments have managed the program — the jet flew over the past decade, a competition to select a new fighter for the air force is only now underway. Even then, the last CF-18 isn't scheduled to be retired until 2032.

The air force "imagined perhaps transitioning the fighter force a little bit earlier," Meinzinger acknowledged, which is why the need to invest in the CF-18s' combat systems wasn't taken — or even apparent — earlier.

"Because we anticipated flying the aircraft longer, this is why we're doing what we're doing to ensure we've got at least parity with the threats that we would see over that timeline before we can transition to the new fighter," he added.

The federal auditor general flagged concerns with the combat effectiveness of Canada's CF-18s in a report in November 2018,

warning that the planes "will become more vulnerable as advanced combat aircraft and air defence systems continue to be developed and used by other nations."

The auditor general also found that even though the Department of National Defence had decided to invest money into the CF-18s to keep them flying past 2020, it "removed upgrades to combat capability," in part because of "cost concerns."

Documents obtained by The Canadian Press through the Access to Information Act show the auditor general's office initially wanted to say the fleet was "not fully capable for combat." But defence officials said that could "compromise operational security" and suggested toned down language.

"We've got an excellent capability," Meinzinger said when asked about the state of the fleet. "The fighter force has got an outstanding reputation globally. They stand the watch 24/7, 365 under the Nordaust rubric. I don't want Canadians to be worried about where we're at today."

The U.S. Marines are looking at keeping their F-18s — upon which the CF-18 is based — in the air until the 2030s, and Meinzinger said the two forces are working together to identify the best ways to do that.

"We've made it a priority and we're moving as fast as we can to get it delivered," he said. "Obviously our intent is always to ensure that we're making the investments such that we believe that we've got at least parity against the threats that we would face."

The Canadian Press

More Canadians headed to help fight Australia fires

OTTAWA Another 69 Canadians are heading to Australia this week to help fight the country's worst bush fires in recent memory.

Foreign Affairs Minister François-Philippe Champagne says the deployment comes after Australia asked for more help.

More than 200 bush fires continue to rage across Australia, with the two most populated states of New South Wales and Victoria bearing the brunt of the damage.

The Canadian Interagency Forest Fire Centre says 27 incident management staff will leave for Melbourne Thursday, followed by two more incident managers and 40 firefighters on the weekend.

This is the sixth wave of Canadians helping out in Australia, bringing the total number to more than 160 people.

The first group of 21 experts left for Australia in early December, and returned to Canada last week.

The latest wave will spend 31 days, all of it in the state of Victoria. Previous groups were deployed to other parts of the country, including Sydney.

"We are all proud of their efforts," Champagne said on Twitter Tuesday afternoon.

Paul Schnurr, an incident commander with the Nova Scotia Department of Lands and Forestry, said he and the other two experts from his province who are part of the latest wave are happy to help.

"Australia has been there for Canada when we needed them on some of our big fires, it feels great to be able to return the favour," he said in a statement.

The interagency centre, a Winnipeg-based non-profit entity run by federal, provincial and territorial fire management agencies, said in a statement Australian firefighters helped out in Canada in 2015, 2017 and 2018.

Australia is suffering a lengthy and deadly wildfire season that began in October, which is several months earlier than usual.

More than seven million hectares across the country have burned, killing 28 people, destroying or damaging more than 3,000 homes, and forcing the largest peacetime evacuation in Australia's history.

It's estimated more than half a billion animals have died.

Champagne said last week Canada would consider any assistance Australia needs but its government had only asked for additional people so far.

Most of the Canadians who have travelled there to date are helping with managing the response teams, overseeing the use of air-planes, and providing expertise in how the fires will behave.

The United States and New Zealand have also sent firefighters to help.

The Canadian Press



Smoke rises from a fire in New South Wales, Australia. More Canadian firefighters are headed to help fight the fires. TRACEY NEARM/REUTERS



Avis de commencement et portes ouvertes
Cadre de référence pour une évaluation environnementale
Développement du futur centre de traitement des déchets de l'est de l'Ontario

GFL Environmental Inc., propriétaire et exploitant de l'actuel centre de traitement des déchets de l'est de l'Ontario (EOWHF) à Moose Creek, en Ontario, a entrepris une évaluation environnementale (EE) en vue d'obtenir l'approbation pour le futur développement de l'EOWHF. Le futur développement comprendra la construction d'une capacité supplémentaire d'élimination du site d'enfouissement, GFL a déterminé qu'il y a une occasion d'affaires durable et que l'EOWHF doit continuer à fournir une capacité d'élimination à long terme. En développant cette capacité d'élimination supplémentaire, GFL sera également en mesure de continuer à fournir des services de réduction de déchets et de compostage des matières organiques à ses clients. L'EOWHF est un employeur et un contributeur financier important pour la communauté locale. Le développement d'une capacité d'élimination supplémentaire de 15,1 millions de mètres cubes sur une période de planification de 20 ans permettra à GFL de continuer à fournir ce type de soutien économique à la collectivité locale. Aucun changement au volume d'enfouissement autorisé ou aux routes d'accès au site n'est proposé.

L'EOWHF est situé dans le canton de North Stormont, à environ 5 kilomètres au nord-nord-ouest du village de Moose Creek, en Ontario, et à 5 kilomètres à l'est du village de Casselman, en Ontario. Le futur développement proposé sera situé sur des terrains qui appartiennent actuellement ou qui seront détenus par GFL, et pourrait inclure une zone de l'EOWHF existant et nécessaire. L'emplacement de l'EOWHF existant et le futur développement proposé sont indiqués dans le Plan clé ci-dessous. L'EE a pour objet d'évaluer les effets potentiels du développement sur l'environnement.

Le processus
L'EE sera effectuée conformément aux exigences de la Loi sur l'évaluation environnementale. La première étape du processus est la préparation du cadre de référence. Le cadre de référence établira le cadre de travail et le plan de travail du promoteur pour répondre aux exigences de la Loi sur l'évaluation environnementale au moment de préparer l'EE, y compris les solutions de rechange qui seront envisagées et les activités de consultation publique qui seront menées. Si le ministre l'approuve, le cadre de référence fournira le cadre et les exigences pour la préparation de l'EE.

PLAN CLÉ



Consultation
Les membres du public, les organismes, les communautés autochtones et les autres personnes intéressées sont encouragées à participer activement au processus de planification en assistant aux consultations ou en communiquant directement avec le personnel pour lui faire part de leurs commentaires ou leurs questions. Des possibilités de consultation sont prévues tout au long du processus de planification et seront annoncées dans les journaux locaux, sur le site Web du projet www.gflenv.com/moose-creek-ee/ et par courrier direct et/ou électronique (courriel).

Une journée portes ouvertes pour présenter le projet, discuter de l'élaboration du contenu du mandat, du processus d'EE et du processus de consultation qui sera suivi pendant l'élaboration de l'EE est prévue pour le jeudi 30 janvier 2020 au Moose Creek Recreation Centre, 439 Polyparc St., Moose Creek, ON de 16 h à 20 h.

Nous vous encourageons à assister et à participer afin de nous aider à mieux cerner les enjeux, les intérêts ou les idées à aborder dans l'EE. En plus d'assister à la journée portes ouvertes, nous vous invitons à envoyer vos commentaires par la poste, par courriel ou par télécopieur à la personne-ressource du projet indiquée ci-dessous. Si vous souhaitez être ajouté à la liste de diffusion du projet ou si vous avez des questions liées au projet, veuillez communiquer avec :

M. Greg van Loenen, agent de conformité environnementale
GFL Environmental Inc.
17125, chemin Laffèche, Moose Creek (Ontario) K0C 1W0
Téléphone : 613-538-2776 ext. 223
Télécopieur : 613-538-2779 Courriel : gvanloenen@gflenv.com

Tous les renseignements personnels inclus dans une présentation — comme le nom, l'adresse, le numéro de téléphone et l'emplacement de la propriété — sont recueillis, conservés et communiqués par le ministère de l'Environnement, Conservation et Parcs à des fins de transparence et de consultation. Les renseignements sont recueillis en vertu de la Loi sur l'évaluation environnementale ou sont recueillis et conservés aux fins de la création d'un document accessible au grand public conformément à l'article 37 de la Loi sur l'accès à l'information et la Loi sur la protection de la vie privée. Les renseignements personnels que vous soumettez seront versés dans un dossier public qui est accessible au grand public, à moins que vous ne demandiez que vos renseignements personnels demeurent confidentiels. Pour de plus amples renseignements, veuillez communiquer avec le coordonnateur de l'accès à l'information et de la protection des renseignements personnels du ministère de l'Environnement, de la Conservation et des Parcs au 416-327-1434. Publié le 15 janvier 2020



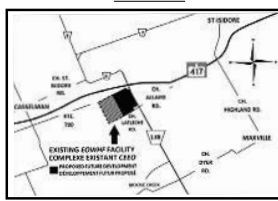
Notice of Commencement and Public Open House
Terms of Reference for an Environmental Assessment
Future Development of the Eastern Ontario Waste Handling Facility

GFL Environmental Inc., the owner and operator of the existing Eastern Ontario Waste Handling Facility (EOWHF) in Moose Creek, Ontario, has initiated an Environmental Assessment (EA) seeking approval for the future development of the EOWHF. The future development will involve the construction of additional landfill disposal capacity. GFL has determined that there is a sustainable business opportunity and need for the EOWHF to continue to provide disposal capacity over the long term. By developing this additional disposal capacity, GFL will also be able to continue providing economical waste diversion and green bin organics composting services to customers into the future. The EOWHF is a major employer and financial contributor to the local community. The development of an additional 15.1 million cubic metres of disposal capacity over a 20 year planning period will allow GFL to continue to provide this type of economic support to the local community. No changes to the approved fill rates or site access routes are proposed.

The EOWHF is located within the Township of North Stormont, approximately 5 kilometres north-northwest of the village of Moose Creek, Ontario, and 5 kilometres east of the village of Casselman, Ontario. The proposed future development will be on land currently owned or to be owned by GFL, and may include an area of the existing EOWHF and the proposed future development are shown on the Key Plan below. The purpose of the EA is to assess the potential effects of the future development on the environment.

The Process
The EA will be carried out in accordance with the requirements of the Environmental Assessment Act. The first step in the process is the preparation of a Terms of Reference. The Terms of Reference will set out the proponent's framework and work plan for addressing the Environmental Assessment Act requirements when preparing the EA, including such things as the alternatives that will be considered and the public consultation activities that will be carried out. If approved by the Minister, the Terms of Reference will provide the framework and requirements for the preparation of the EA.

KEY PLAN



Consultation
Members of the public, agencies, Indigenous communities and other interested persons are encouraged to actively participate in the planning process by attending consultation opportunities or contacting staff directly with comments or questions. Consultation opportunities are planned throughout the planning process and will be advertised in local newspapers, on the project website www.gflenv.com/moose-creek-ee/ and by direct and/or electronic mail (email).

A Public Open House to introduce the project, discuss the development and contents of the Terms of Reference, the EA process, and the consultation process that will be followed during the development of the EA is scheduled for Thursday, January 30th, 2020 at the Moose Creek Recreation Centre, 439 Polyparc St., Moose Creek, ON from 4 p.m. to 8 p.m.

You are encouraged to attend and participate in helping us identify issues, interests or ideas to be addressed in the EA. In addition to attending the Public Open House, you are invited to submit your comments by mail, email, or fax to the contact for the project provided below. If you would like to be added to the project mailing list or have project-related questions, please contact:

Mr. Greg van Loenen, Environmental Compliance Officer
GFL Environmental Inc.
17125 Laffèche Road, Moose Creek, Ontario K0C 1W0
Telephone : 613-538-2776 ext. 223
Fax: 613-538-2779 Email: gvanloenen@gflenv.com

All personal information included in a submission — such as name, address, telephone number and property location — is collected, maintained and disclosed by the Ministry of the Environment, Conservation and Parks for the purposes of transparency and consultation. The information is collected under the authority of the Environmental Assessment Act or is collected and maintained for the purpose of creating a record that is available to the general public as described in s.37 of the Freedom of Information and Protection of Privacy Act. Personal information you submit will become part of a public record that is available to the general public unless you request that your personal information remain confidential. For more information, please contact the Ministry of the Environment, Conservation and Parks Freedom of Information and Privacy Coordinator at 416-327-1434. Published January 15, 2020

Meet the first 'Guy' in Meghan's life

DEVIKA DESAI

Five years ago, a stray beagle was discovered abandoned at a Kentucky animal shelter. With no name, no collar and no family to claim him, the dog sat for weeks in the shelter with no prospects.

Today, Guy's life has completely changed. Thanks to his new owner, the beagle has travelled on private jets, lounged in the most luxurious of homes and has hobnobbed with the world's elite, including the Queen.

Guy's recent move to Vancouver Island is one of the few confirmed facts in the whirlwind of media reports and rumours about the future address of his new owners, the Duke and Duchess of Sussex. The couple reportedly flew the

beagle and a black Labrador to Canada in November during their six-week sabbatical from royal duties.

The Daily Mail royal correspondent Rebecca English reported that "insiders confirmed that the dogs staying in Canada was the biggest clue, in hindsight, that they were unlikely to come back from this so-called holiday."

"Both the Duke and Duchess adore their dogs and Guy has already been relocated from Canada to London once when Meghan moved over," the Daily Mail's source said. "She wouldn't have considered a move again for him if it wasn't going to be at least semi-permanent."

From a Kentucky shelter to an Ontario dog rescue to Kensington Palace, Guy's life is one that mirrors the fable of pauper to prince. "He was scared because he was in a new place, he didn't know what was going on," said J'rie Elliott, who found the dog in the Montgomery County Animal Shelter drop box in 2015. "But he got really



Instagram photo of Meghan and her dog, Guy. INSTAGRAM/MEGHAN MARBLE

comfortable with the shelter right away, he wasn't timid or standoffish once he figured out we weren't going to hurt him."

The staff waited seven days to see whether anyone would claim him. When no one did, the shelter put the beagle up for adoption.

No luck. "It's basically raising beagles in Kentucky," said Elliott. Beagles and hounds are popular as hunting dogs in the South, but post-retirement, the dogs are given up.

Elliott had worked with the owner of a dog rescue in Canada, and

she decided to send Guy's profile to the organizer. "She (the owner) saw him, fell in love with him and we co-ordinated his travel," said Elliott. A network of volunteers and other rescue agencies helped transport Guy, along with two other beagles, more than 1,000 km to the Canadian border, where he was met by Dolores Doherty, the owner of A Dog's Dream, an Ontario canine rescue.

Guy had barely been in Canada a full day when he was brought to an adoption event at a Pet Valu store in Milton, Ont., the same one Meghan Markle attended with her dog, Bogart, a Labrador-shepherd cross. Markle, then living in Toronto and starring in the TV drama Suits, had reportedly applied to adopt another beagle. However, the adoption fell through because the dog was unable to get along with Bogart.

Enter Guy. "He was just sitting there with those big beagle sad eyes, looking

so depressed," Doherty told The Guardian newspaper. "He was irresistible."

Markle's connection with Guy was instant — and Guy passed the test with Bogart. They went on a walk together and became friends, according to Doherty, and that sealed the deal.

T Is the story **Timely?**

Check the date the story was published.

LEARN MORE AT www.SPOTfakenews.ca

**CORNWALL REGIONAL
PHYSIOTHERAPY**

Diane Fry, PT, BSc.PT, MCPA
Colin Jeeves, PTA, BSc.PT (Ret)

- PRIVATE TREATMENTS 64 YRS AND UNDER
- SENIOR TREATMENT RATES 65 YRS AND OVER
- WSIB, DVA, RCMP APPROVED
- SHOCKWAVE THERAPY AVAILABLE

DIRECT BILLING MOST
EXTENDED HEALTH PLANS

APPROVED MOTOR VEHICLE ACCIDENTS **613-935-7018**

WWW.CORNWALLREGIONAL.COM
division of DIANE FRY Physiotherapist Professional Corporation

**THE GLENGARRIAN
PUB & RESTAURANT**

Daily Lunch Specials Starting at **\$7.99**

KARAOKE

FRIDAY AND SATURDAY
JAMIE JARVO
8:30PM - 11:30PM
DJ
11:30PM - 2AM

Authentic Celtic Menu & Much More

ROAST TURKEY DINNER
Every Fri. Sat. & Sunday **\$16.95**

ALL DAY BREAKFAST
EVERYDAY **49¢ EACH**
WINGS
50 Flavours

#841 SYDNEY STREET 613-933-6426
BOOK YOUR PRIVATE EVENT WITH US AND RECEIVE 10% DISCOUNT
CALL US TO FIND OUT OUR CATERING SPECIALS

GFL GREEN FOR LIFE

Avis de commencement et portes ouvertes
Cadre de référence pour une évaluation environnementale
Développement du futur centre de traitement des déchets de l'est de l'Ontario

GFL Environmental Inc., propriétaire et exploitant de l'actuel centre de traitement des déchets de l'est de l'Ontario (EOWHF) à Moose Creek, en Ontario, a entrepris une évaluation environnementale (EE) en vue d'obtenir l'approbation pour le futur développement de l'EOWHF. Le futur développement comprendra la construction d'une capacité supplémentaire d'élimination du site d'enfouissement, GFL a déterminé qu'il y a une occasion d'affaires durable et que l'EOWHF doit continuer à fournir une capacité d'élimination à long terme. En développant cette capacité d'élimination supplémentaire, GFL sera également en mesure de continuer à fournir des services de réduction de déchets et de compostage des matières organiques à ses clients. L'EOWHF est un employeur et un contributeur financier important pour la communauté locale. Le développement d'une capacité d'élimination supplémentaire de 15,1 millions de mètres cubes sur une période de planification de 20 ans permettra à GFL de continuer à fournir ce type de soutien économique à la collectivité locale. Aucun changement au volume d'enfouissement autorisé ou aux routes d'accès au site n'est proposé.

L'EOWHF est situé dans le canton de North Stormont, à environ 5 kilomètres au nord-nord-ouest du village de Moose Creek, en Ontario, à 5 kilomètres à l'est du village de Casselman, en Ontario. Le futur développement proposé sera situé sur des terrains qui appartiennent actuellement ou qui seront détenus par GFL, et pourrait inclure une zone de l'EOWHF existant si nécessaire. L'emplacement de l'EOWHF existant et le futur développement proposé sont indiqués dans le Plan ci-dessous. L'EE a pour objet d'évaluer les effets potentiels du futur développement sur l'environnement.

Le processus
L'EE sera effectuée conformément aux exigences de la Loi sur l'évaluation environnementale. La première étape du processus est la préparation du cadre de référence. Le cadre de référence établira le cadre de travail et le plan de travail du promoteur pour répondre aux exigences de la Loi sur l'évaluation environnementale au moment de préparer l'EE, y compris les solutions de rechange qui seront envisagées et les activités de consultation publique qui seront menées. Si le ministre l'approuve, le cadre de référence fournira le cadre et les exigences pour la préparation de l'EE.

PLAN CLÉ

Consultation
Les membres du public, les organismes, les communautés autochtones et les autres personnes intéressées sont encouragées à participer activement au processus de planification en assistant aux consultations ou en communiquant directement avec le personnel pour lui faire part de leurs commentaires ou leurs questions. Des possibilités de consultation sont prévues tout au long du processus de planification et seront annoncées dans les journaux locaux, sur le site Web du projet www.gflenv.com/moose-creek-ee/ et par courrier direct et/ou électronique (courriel).
Une journée portes ouvertes pour présenter le projet, discuter de l'élaboration du contenu du mandat, du processus d'EE et du processus de consultation qui sera suivi pendant l'élaboration de l'EE est prévue pour le jeudi 30 janvier 2020 au Moose Creek Recreation Centre, 4 St-Polycarpe St., Moose Creek, ON à 16 h à 20 h.

Nous vous encourageons à assister et à participer afin de nous aider à cerner les enjeux, les intérêts ou les idées à aborder dans l'EE. En plus d'assister à la journée portes ouvertes, nous vous invitons à envoyer vos commentaires par la poste, par courriel ou par télécopieur à la personne-ressource du projet indiquée ci-dessous. Si vous souhaitez être ajouté à la liste de diffusion du projet ou si vous avez des questions liées au projet, veuillez communiquer avec :

M. Greg van Loenen, agent de conformité environnementale
GFL Environmental Inc.
17125, chemin Lafleche, Moose Creek (Ontario) K0C 1W0
Téléphone : 613-538-2776 ext. 223
Télécopieur : 613-538-2779 Courriel : gvanloenen@gflenv.com

Tous les renseignements personnels inclus dans une présentation – comme le nom, l'adresse, le numéro de téléphone et l'emplacement de la propriété – sont recueillis, conservés et communiqués par le ministère de l'Environnement, Conservation et Parcs à des fins de transparence et de consultation. Les renseignements recueillis en vertu de la Loi sur l'évaluation environnementale ou sont recueillis et conservés aux fins de la création d'un document accessible au grand public conformément à l'article 37 de la Loi sur l'accès à l'information et la Loi sur la protection de la vie privée. Les renseignements personnels que vous soumettez seront versés dans un dossier public qui est accessible au grand public, à moins que vous ne demandiez que vos renseignements personnels demeurent confidentiels. Pour de plus amples renseignements, veuillez communiquer avec le coordonnateur de l'accès à l'information et de la protection des renseignements personnels du ministère de l'Environnement, de la Conservation et des Parcs au 416-327-1434.
Publié le 15 janvier 2020

GFL GREEN FOR LIFE

Notice of Commencement and Public Open House
Terms of Reference for an Environmental Assessment
Future Development of the Eastern Ontario Waste Handling Facility

GFL Environmental Inc., the owner and operator of the existing Eastern Ontario Waste Handling Facility (EOWHF) in Moose Creek, Ontario, has initiated an Environmental Assessment (EA) seeking approval for the future development of the EOWHF. The future development will involve the construction of additional landfill disposal capacity. GFL has determined that there is a sustainable business opportunity and need for the EOWHF to continue to provide disposal capacity over the long term. By developing this additional disposal capacity, GFL will also be able to continue providing economical waste diversion and green bin organics composting services to customers into the future. The EOWHF is a major employer and financial contributor to the local community. The development of an additional 15.1 million cubic metres of disposal capacity over a 20 year planning period will allow GFL to continue to provide this type of economic support to the local community. No changes to the approved fill rates or site access routes are proposed.

The EOWHF is located within the Township of North Stormont, approximately 5 kilometres north-northwest of the village of Moose Creek, Ontario, and 5 kilometres east of the village of Casselman, Ontario. The proposed future development will be on land currently owned or to be owned by GFL, and may include an area of the existing EOWHF if necessary. The location of the existing EOWHF and the proposed future development are shown on the Key Plan below. The purpose of the EA is to assess the potential effects of the future development on the environment.

The Process
The EA will be carried out in accordance with the requirements of the Environmental Assessment Act. The first step in the process is the preparation of a Terms of Reference. The Terms of Reference will set out the proponent's framework and work plan for addressing the Environmental Assessment Act requirements when preparing the EA, including such things as the alternatives that will be considered and the public consultation activities that will be carried out. If approved by the Minister, the Terms of Reference will provide the framework and requirements for the preparation of the EA.

KEY PLAN

Consultation
Members of the public, agencies, Indigenous communities and other interested persons are encouraged to actively participate in the planning process by attending consultation opportunities or contacting staff directly with comments or questions. Consultation opportunities are planned throughout the planning process and will be advertised in local newspapers, on the project website www.gflenv.com/moose-creek-ee/ and by direct and/or electronic mail (email).
A Public Open House to introduce the project, discuss the development and contents of the Terms of Reference, the EA process, and the consultation process that will be followed during the development of the EA is scheduled for Thursday, January 30th, 2020 at the Moose Creek Recreation Centre, 4 St-Polycarpe St., Moose Creek, ON from 4 p.m. to 8 p.m.

You are encouraged to attend and participate in helping us identify issues, interests or ideas to be addressed in the EA. In addition to attending the Public Open House, you are invited to submit your comments by mail, email, or fax to the contact for the project provided below. If you would like to be added to the project mailing list or have project-related questions, please contact:

Mr. Greg van Loenen, Environmental Compliance Officer
GFL Environmental Inc.
17125 Lafleche Road, Moose Creek, Ontario K0C 1W0
Telephone: 613-538-2776 ext. 223
Fax: 613-538-2779 Email: gvanloenen@gflenv.com

All personal information included in a submission – such as name, address, telephone number and property location – is collected, maintained and disclosed by the Ministry of the Environment, Conservation and Parks for the purposes of transparency and consultation. The information is collected under the authority of the Environmental Assessment Act or is collected and maintained for the purpose of creating a record that is available to the general public as described in s.37 of the Freedom of Information and Protection of Privacy Act. Personal information you submit will become part of a public record that is available to the general public unless you request that your personal information remain confidential. For more information, please contact the Ministry of the Environment, Conservation and Parks' Freedom of Information and Privacy Coordinator at 416-327-1434.
Published January 15, 2020

Notice of Commencement and Public Open House
Terms of Reference for an Environmental Assessment
Future Development of the Eastern Ontario Waste Handling Facility

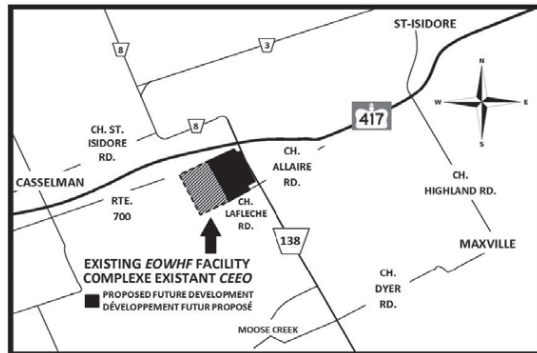
GFL Environmental Inc., the owner and operator of the existing *Eastern Ontario Waste Handling Facility* (EOWHF) in Moose Creek, Ontario, has initiated an Environmental Assessment (EA) seeking approval for the future development of the EOWHF. The future development will involve the construction of additional landfill disposal capacity. GFL has determined that there is a sustainable business opportunity and need for the EOWHF to continue to provide disposal capacity over the long term. By developing this additional disposal capacity, GFL will also be able to continue providing economical waste diversion and green bin organics composting services to customers into the future. The EOWHF is a major employer and financial contributor to the local community. The development of an additional 15.1 million cubic metres of disposal capacity over a 20 year planning period will allow GFL to continue to provide this type of economic support to the local community. No changes to the approved fill rates or site access routes are proposed.

The EOWHF is located within the Township of North Stormont, approximately 5 kilometres north-northwest of the village of Moose Creek, Ontario, and 5 kilometres east of the village of Casselman, Ontario. The proposed future development will be on land currently owned or to be owned by GFL, and may include an area of the existing EOWHF if necessary. The location of the existing EOWHF and the proposed future development are shown on the Key Plan below. The purpose of the EA is to assess the potential effects of the future development on the environment.

The Process

The EA will be carried out in accordance with the requirements of the *Environmental Assessment Act*. The first step in the process is the preparation of a Terms of Reference. The Terms of Reference will set out the proponent's framework and work plan for addressing the *Environmental Assessment Act* requirements when preparing the EA, including such things as the alternatives that will be considered and the public consultation activities that will be carried out. If approved by the Minister, the Terms of Reference will provide the framework and requirements for the preparation of the EA.

KEY PLAN



Consultation

Members of the public, agencies, Indigenous communities and other interested persons are encouraged to actively participate in the planning process by attending consultation opportunities or contacting staff directly with comments or questions. Consultation opportunities are planned throughout the planning process and will be advertised in local newspapers, on the project website www.gflenv.com/moose-creek-eowhf and by direct and/or electronic mail (email).

A Public **Open House** to introduce the project, discuss the development and contents of the Terms of Reference, the EA process, and the consultation process that will be followed during the development of the EA is scheduled for **Thursday, January 30th, 2020 at the Moose Creek Recreation Centre, 4 St Polycarp St, Moose Creek, ON from 4 p.m. to 8 p.m.** You are encouraged to attend and participate in helping us identify issues, interests or ideas to be addressed in the EA. In addition to attending the Public Open House, you are invited to submit your comments by mail, email, or fax to the contact for the project provided below. If you would like to be added to the project mailing list or have project-related questions, please contact:

Mr. Greg van Loenen, Environmental Compliance Officer
GFL Environmental Inc.
17125 Lafleche Road, Moose Creek, Ontario K0C 1W0
Telephone: 613-538-2776 ext. 223 • Fax: 613-538-2779
Email: gvanloenen@gflenv.com

All personal information included in a submission – such as name, address, telephone number and property location – is collected, maintained and disclosed by the Ministry of the Environment, Conservation and Parks for the purposes of transparency and consultation. The information is collected under the authority of the Environmental Assessment Act or is collected and maintained for the purpose of creating a record that is available to the general public as described in s.37 of the Freedom of Information and Protection of Privacy Act. Personal information you submit will become part of a public record that is available to the general public unless you request that your personal information remain confidential. For more information, please contact the Ministry of the Environment, Conservation and Parks' Freedom of Information and Privacy Coordinator at 416-327-1434.

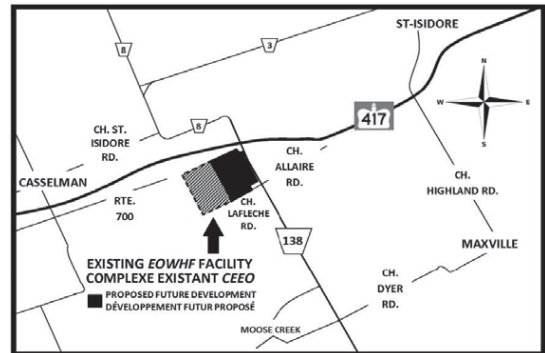
Avis de commencement et portes ouvertes
Cadre de référence pour une évaluation environnementale
Développement du futur centre de traitement des déchets de l'est de l'Ontario

GFL Environmental Inc., propriétaire et exploitant de l'actuel centre de *traitement des déchets de l'est de l'Ontario* (EOWHF) à Moose Creek, en Ontario, a entrepris une évaluation environnementale (EE) en vue d'obtenir l'approbation pour le futur développement du EOWHF. Le futur développement comprendra la construction d'une capacité supplémentaire d'élimination du site d'enfouissement. GFL a déterminé qu'il y a une occasion d'affaires durable et que l'EOWHF doit continuer à fournir une capacité d'élimination à long terme. En développant cette capacité d'élimination supplémentaire, GFL sera également en mesure de continuer à fournir des services de réduction de déchets et de compostage des matières organiques à ses clients. L'EOWHF est un employeur et un contributeur financier important pour la communauté locale. Le développement d'une capacité d'élimination supplémentaire de 15,1 millions de mètres cubes sur une période de planification de 20 ans permettra à GFL de continuer à fournir ce type de soutien économique à la collectivité locale. Aucun changement au volume d'enfouissement autorisé ou aux routes d'accès au site n'est proposé. L'EOWHF est situé dans le canton de North Stormont, à environ 5 kilomètres au nord-nord-ouest du village de Moose Creek, en Ontario, et à 5 kilomètres à l'est du village de Casselman, en Ontario. Le futur développement proposé sera situé sur des terrains qui appartiennent actuellement ou qui seront détenues par GFL, et pourrait inclure une zone de l'EOWHF existant si nécessaire. L'emplacement de l'EOWHF existant et le futur développement proposé sont indiqués dans le Plan clé ci-dessous. L'EE a pour objet d'évaluer les effets potentiels du futur développement sur l'environnement.

Le processus

L'EE sera effectuée conformément aux exigences de la *Loi sur l'évaluation environnementale*. La première étape du processus est la préparation du cadre de référence. Le cadre de référence établira le cadre de travail et le plan de travail du promoteur pour répondre aux exigences de la *Loi sur l'évaluation environnementale* au moment de préparer l'EE, y compris les solutions de rechange qui seront envisagées et les activités de consultation publique qui seront menées. Si le ministre l'approuve, le cadre de référence fournira le cadre et les exigences pour la préparation de l'EE.

PLAN CLÉ



Consultation

Les membres du public, les organismes, les communautés autochtones et les autres personnes intéressées sont encouragées à participer activement au processus de planification en assistant aux consultations ou en communiquant directement avec le personnel pour lui faire part de leurs commentaires ou leurs questions. Des possibilités de consultation sont prévues tout au long du processus de planification et seront annoncées dans les journaux locaux, sur le site Web du projet www.gflenv.com/moose-creek-eowhf et par courrier direct et/ou électronique (courriel).

Une **journée portes ouvertes** pour présenter le projet, discuter de l'élaboration et du contenu du mandat, du processus d'EE et du processus de consultation qui sera suivi pendant l'élaboration de l'EE est prévue pour le **jeudi 30 janvier 2020 au Moose Creek Recreation Centre, 4 St Polycarp St, Moose Creek, ON de 16 h à 20 h.**

Nous vous encourageons à y assister et à participer afin de nous aider à cerner les enjeux, les intérêts ou les idées à aborder dans l'EE. En plus d'assister à la journée portes ouvertes, nous vous invitons à envoyer vos commentaires par la poste, par courriel ou par télécopieur à la personne-ressource du projet indiquée ci-dessous. Si vous souhaitez être ajouté à la liste de diffusion du projet ou si vous avez des questions liées au projet, veuillez communiquer avec :

M. Greg van Loenen, agent de conformité environnementale
GFL Environmental Inc.
17125, chemin Lafleche, Moose Creek (Ontario) K0C 1W0
Téléphone : 613-538-2776 ext. 223 • Télécopieur : 613-538-2779
Courriel : gvanloenen@gflenv.com

Tous les renseignements personnels inclus dans une présentation – comme le nom, l'adresse, le numéro de téléphone et l'emplacement de la propriété – sont recueillis, conservés et communiqués par le ministère de l'Environnement, Conservation et Parc à des fins de transparence et de consultation. Les renseignements sont recueillis en vertu de la Loi sur l'évaluation environnementale ou sont recueillis et conservés aux fins de la création d'un document accessible au grand public conformément à l'article 37 de la Loi sur l'accès à l'information et Loi sur la protection de la vie privée. Les renseignements personnels que vous soumettez seront versés dans un dossier public qui est accessible au grand public, à moins que vous ne demandiez que vos renseignements personnels demeurent confidentiels. Pour de plus amples renseignements, veuillez communiquer avec le coordonnateur de l'accès à l'information et de la protection des renseignements personnels du ministère de l'Environnement, de la Conservation et des Parcs au 416-327-1434.



Appendix E. Example of Letters to Indigenous Communities



January 15, 2020

[Name]

[Address]

Dear [Name],

Subject: GFL Environmental Inc. Notice of Commencement and Public Open House Terms of Reference for an Environmental Assessment – Future Development of the Eastern Ontario Waste Handling Facility

On behalf of GFL Environmental Inc., I would like to inform you that we are commencing an Environmental Assessment (EA) seeking approval for the future development of our existing Eastern Ontario Waste Handling Facility (EOWHF) in Moose Creek, Ontario. GFL has determined that there is a sustainable business opportunity and need for the EOWHF to continue to provide landfill disposal capacity over the long term.

The EOWHF is located within the Township of North Stormont, approximately 5 kilometres north-northwest of the village of Moose Creek, Ontario, and 5 kilometres east of the village of Casselman, Ontario. The proposed future development will be on land currently owned or to be owned by GFL, and may include an area of the existing EOWHF if necessary. The location of the existing EOWHF and the proposed future development are shown in the attached Notice.

A copy of the Notice of Commencement and Public Open House for the Terms of Reference, which is the initial step in the EA process, is attached. The purpose of the EA is to assess the potential effects of the proposed future development on the environment. The EA will be carried out in accordance with the requirements of the *Environmental Assessment Act* (EAA).

We invite you to attend a **Public Open House** to introduce the project, and discuss the development and contents of the ToR, the EA process and the consultation process that will be followed during the development of the EA. The **Public Open House** is scheduled for **Thursday January 30th, 2020** at the **Moose Creek Recreation Centre, 4 St Polycarp St, Moose Creek, Ontario** from **4 p.m. to 8 p.m.** We hope that your schedule will permit you to attend.

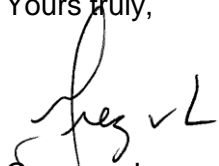
You are encouraged to participate in helping us identify issues, interests or ideas to be addressed throughout the EA. We will continue to keep you updated on our EA and request your input through consultation events, the project website www.gflenv.com/moose-creek-eowhf and by mail, email or fax.



Members of the public, agencies, Indigenous communities and other interested persons are encouraged to continue to actively participate in the planning process by attending consultation opportunities or contacting staff directly with comments or questions.

If you have any questions regarding our project or the ToR, please do not hesitate to contact me at anytime.

Yours truly,



Greg van Loenen
Environmental Compliance Officer
Telephone: (613) 538-2776 ext. 223
Email: gvanloenen@gflenv.com

Attachment: Notice of Commencement and Public Open House Terms of Reference for an Environmental Assessment – Future Development of the Eastern Ontario Waste Handling Facility





15 janvier 2020

[Nom]

[Adresse]

Cher [Nom],

**Objet : GFL Environmental Inc. Avis de commencement et portes ouvertes
Cadre de référence pour une évaluation environnementale – Futur
développement de l'installation de manutention des déchets de l'Est de l'Ontario**

Au nom de GFL Environmental Inc., j'aimerais vous informer que nous entreprenons une évaluation environnementale (EE) en vue de l'approbation de l'aménagement futur de notre installation de traitement des déchets de l'Est de l'Ontario (EOWHF) à Moose Creek, en Ontario. GFL a déterminé qu'il y a une occasion d'affaires durable et que le EOWHF doit continuer à fournir une capacité d'élimination des sites d'enfouissement à long terme.

L'EOWHF est situé dans le canton de North Stormont, à environ 5 kilomètres au nord-nord-ouest du village de Moose Creek, en Ontario, et à 5 kilomètres à l'est du village de Casselman, en Ontario. Le futur développement proposé portera sur des terres qui appartiennent actuellement ou qui seront détenues par GFL, et pourrait inclure une zone de l'EOWHF existant si nécessaire. L'emplacement de l'EOWHF actuel et du projet de futur développement sont indiqués dans l'avis ci-joint.

Vous trouverez ci-joint une copie de l'avis de lancement et la journée portes ouvertes du mandat, qui constitue l'étape initiale du processus d'EE. L'EE a pour objet d'évaluer les effets potentiels du futur développement proposé sur l'environnement. L'EE sera effectuée conformément aux exigences de la Loi sur l'évaluation environnementale (LEE).

Nous vous invitons à assister à une **journée portes ouvertes** afin de vous présenter le projet et discuter de l'élaboration et du contenu du mandat, du processus d'EE et du processus de consultation qui sera suivi pendant l'élaboration de l'EE. La **journée portes ouvertes** est prévue pour le **jeudi 30 janvier 2020 au Moose Creek Recreation Centre, 4 St Polycarp St, Moose Creek, Ontario de 16 h à 20 h**. Nous espérons que votre horaire vous permettra d'y assister.

Nous vous encourageons à participer à la détermination des enjeux, des intérêts ou des idées à aborder tout au long de l'EE. Nous continuerons de vous tenir au courant de notre évaluation environnementale et de vous demander votre avis au moyen d'activités de consultation, sur le site Web du projet www.gflenv.com/moose-creek-eowhf et par la poste, par courriel ou par télécopieur.



Membres du public, les organismes, les collectivités autochtones et les autres personnes intéressées sont encouragés à continuer de participer activement au processus de planification en assistant aux consultations ou en communiquant directement avec le personnel pour lui faire part de leurs commentaires ou de leurs questions.

Si vous avez des questions concernant notre projet ou le mandat, n'hésitez pas à communiquer avec moi en tout temps.

Je vous en prie,



Greg van Loenen
Agent de conformité environnementale
Téléphone : (613) 538-2776 ext. 223
Courriel : gvanloenen@gflenv.com

Pièce jointe : Avis de commencement et portes ouvertes sur le mandat d'une évaluation environnementale – futur développement de l'installation de manutention des déchets de l'est de l'Ontario





Appendix F. Indigenous Community Mailing List

Indigenous Community Mailing List

Organization/Company	Name	Title	Address	City	Province	Postal Code	Email	Phone Number
Mohawk Council of Akwesasne	Abram Benedict	Grand Chief		Akwesasne	QC	H0M 1A0		
Mohawk Council of Akwesasne	Kylee Tarbell	Director, Environment (Acting)		Akwesasne	ON	K6H 5R7		
Mohawk Council of Akwesasne	Peggy Pyke-Thompson	Program Manager, Environment Program		Akwesasne	ON	K6H 5R7		
Algonquins of Ontario Consultation Office	Janet Stavinga	Executive Director		Pembroke	ON	K8A 8R6		
Huron Wendat Nation Council	Konrad Sioui	Grand Chief		Wendake	QC	G0A 4V0		
Métis Nation of Ontario	Métis Consultation Unit			Ottawa	ON	K1P 5H1		
Mohawks of the Bay of Quinte - Tyendinaga Mohawk Council	R. Donald Maracle	Chief		Tyendinaga Mohawk Territory	ON	K0K 1X0		
MNO Ottawa Métis Council	Eric Gjos	President		Ottawa	ON	K1L 8L8		



Appendix G. Completed Sign-In Sheet

Public Open House #1 on the Environmental Assessment Terms of Reference
Thursday, January 30th, 2020
Moose Creek Recreation Centre
4 St Polycarp St, Moose Creek, ON

journée portes ouvertes au public #1 sur le cadre de référence pour une évaluation environnementale
jeudi 30 janvier 2020
Moose Creek Recreation Centre
4 St Polycarp St, Moose Creek, ON

Name Nom	Address Adresse	Phone Number Numéro de téléphone	Email Courriel
BERNIE BRAY			
Siegfried Gubs			
JOSEE BRIZARD			
Cyril Laflèche			
Paul Groulx			
FRANCOIS LeBLANC			
Benjamin Bercier			
Claude P. Tullon			
Daniel Lafleur			
FRANCOIS St. AMOAR			
Normand Riopel			
Robert Kurdy			
Bernard Boutevin			
MAINE MURPHY			
Dave Cinnamon			
Brent Harbers			
Carol Campeau			
Chris Ford			
Marc & Jeanne Tassier			



Future Development of the Eastern Ontario Waste Handling Facility

Développement futur de l'installation de traitement des déchets de l'Est de l'Ontario

Public Open House #1 on the Environmental Assessment Terms of Reference
 Thursday, January 30th, 2020
 Moose Creek Recreation Centre
 4 St Polycarp St, Moose Creek, ON

journée portes ouvertes au public #1 sur le cadre de référence pour une évaluation environnementale
 jeudi 30 janvier 2020
 Moose Creek Recreation Centre
 4 St Polycarp St, Moose Creek, ON

Name Nom	Address Adresse	Phone Number Numéro de téléphone	Email Courriel
Matt Eamer			
Eric Richer			
Regula Burgi			
RICHARD GONDOR			
David Hebert			
JANNE SILBERT			
Garfield Dunlop			
Carole McMaster			
Andre + Genevieve Plante			
RON Summers			
Nicole Lanthier			
Camille Lanthier			
RICHARD THEBRET 2			
Sonia + Stephane Racine			
Emile + Monique Leroux			
Kandy Douglas			
Diana Legault			



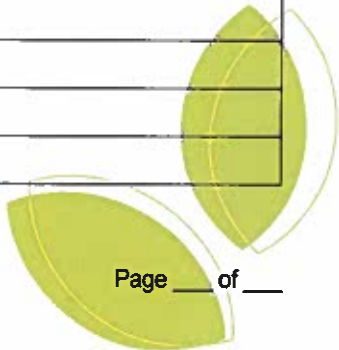
Future Development of the Eastern Ontario Waste Handling Facility

Public Open House #1 on the Environmental Assessment Terms of Reference
Thursday, January 30th, 2020
Moose Creek Recreation Centre
4 St Polycarp St, Moose Creek, ON

Développement futur de l'installation de traitement des déchets de l'Est de l'Ontario

journée portes ouvertes au public #1 sur le cadre de référence pour une évaluation environnementale
jeudi 30 janvier 2020
Moose Creek Recreation Centre
4 St Polycarp St, Moose Creek, ON

Name Nom	Address Adresse	Phone Number Numéro de téléphone	Email Courriel
Patrick Piette			
Michel Gerin			
Veronique Piette			
Gaetan Martin			
Shelagh McPae			
STEVE DENSHAM			
Maxime Quesnel			
Dale Phippen			
DENIS BATH			
Katarina Paulica			
Brian McMeck			
Alain Legault			
Anne Alex			





Appendix H. Open House Poster Boards

Future Development of the Eastern Ontario Waste Handling Facility



Public Open House #1 on the Environmental Assessment (EA) Terms of Reference



January 30, 2020

Welcome

Welcome to **Public Open House #1** on the Terms of Reference for the Future Development of the Eastern Ontario Waste Handling Facility (EOWHF)

This **Public Open House** is being held to:

- Provide an overview of the project
- Discuss the development and contents of the Terms of Reference (ToR)
- Present the Environmental Assessment (EA) process
- Provide information on:
 - the rationale for the project and alternatives being considered
 - the proposed EA evaluation process and criteria
 - the consultation process that will be followed during the development of the ToR and EA

Please take a few moments to browse the display materials. GFL staff and consultants are available to answer any questions you may have.



About GFL

GFL Environmental Inc. is the owner and operator of the existing Eastern Ontario Waste Handling Facility (EOWHF) in Moose Creek, Ontario.

GFL's **guiding principles** are applied to our business partners, workers, suppliers and customers and ensure that we all work towards the same goals – **protecting the environment, supporting the community, protecting the health and safety of our workplace, and to customer service excellence.**

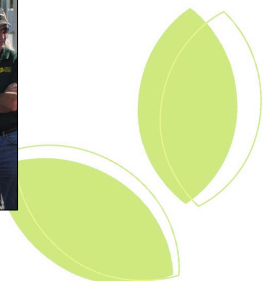
GFL's **values** are reflected in our commitment to:

- Reduce our environmental impact
- Promote environmentally responsible business activities
- Offer and expand our environmental services
- Continue to comply with all relevant environmental legislation and applicable requirements
- Minimize waste, promote diversion through recycling, composting, soil and water remediation, reduce energy and raw material consumption, and reduce greenhouse gas emissions



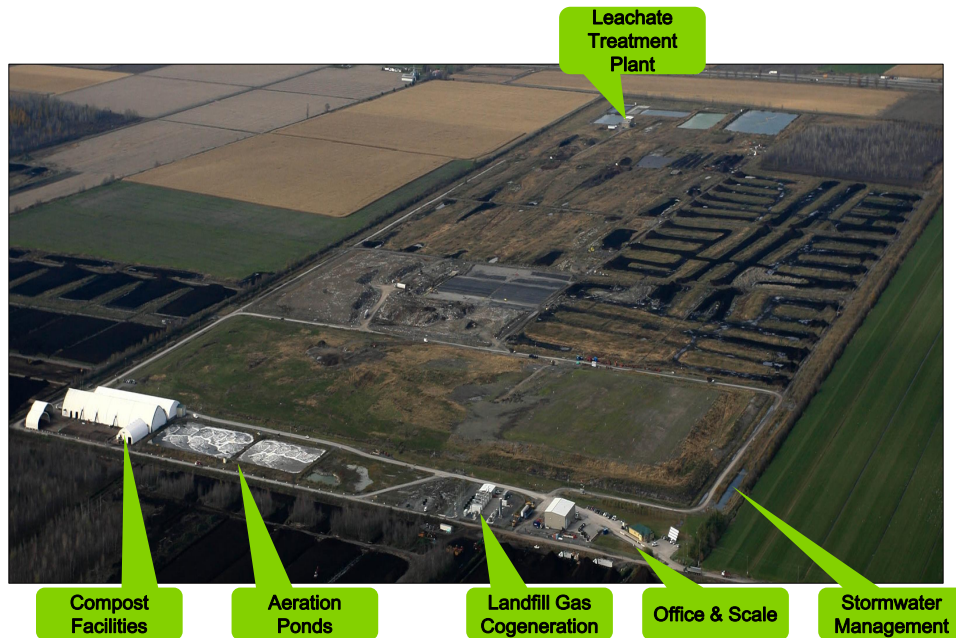
GFL is committed to **enhancing the community and supporting sustainable development** by investing in the growth of our communities. Some of our initiatives include:

- Annual royalties paid to the Township of North Stormont, ~\$583,000 in 2018
- Creating local employment opportunities, over 45 full time jobs
- Supporting local charities, sports teams, community events and public facilities (Finch Arena, Moose Creek Pool)
- Hosting educational events, presentations and facility tours for municipal groups, local schools, various organizations and interest groups, customers and the general public
- Supporting environmental research projects
- Partnering with Habitat for Humanity to allow individuals to drop off items for redistribution
- Working with the local horticultural society to develop a large pollinator garden on the EOWHF site
- Actively participating with the Compost Council of Canada and Ministry of Environment, Conservation and Parks in the development of the Organics Strategy as part of Waste-Free Ontario
- Planning for use of landfill gas as a fuel source to support local business and the development of new business opportunities in the area

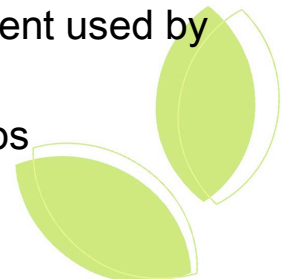


Role of the EOWHF

The EOWHF is located within the Township of North Stormont, approximately 5 km north-northwest of the village of Moose Creek, Ontario, and 5 km east of the village of Casselman, Ontario.



- Critical component of the Provincial waste management infrastructure
- Proudly serving Eastern Ontario municipalities, communities, residents and businesses since 2000
- Over 500 villages/towns/cities across Eastern Ontario plus Indigenous communities served, providing broad regional service
- Services include organics composting, electronic waste collection, tire collection, plus residential drop off, in addition to landfill
- Over 45 full-time employees
- Millions of dollars invested through purchase of goods and services in the local area for the past 20 years
- Significant secondary contracted services and employment used by GFL in all of the operations and support
- Education and research centre for various interest groups and schools



Contributions toward Ontario's Waste Management Goals

The EOWHF supports the *Waste Free Ontario Act* and the *MECP's Preserving and Protecting our Environment for Future Generations* by:

- Providing services to maximize the diversion of materials away from disposal, which includes the largest composting facility in Ontario capable of managing food and organic wastes and producing a high quality compost end product
- Processing organic material at the composting facility that supports Ontario's proposed organics ban and also reduces GHG emissions through the avoidance of methane generation from the decomposition of organics
- Collecting methane and producing 4.5 MW of renewable energy for the Ontario Power grid (supporting approximately 4,000 homes), with capacity to manage additional gas volumes collected from the future development
- Collecting and diverting tires, waste electrical and electronic equipment
- Planning for the development of greenhouses and/or comparable facilities at the EOWHF to use the heat from the LFG utilization facility



The Proposed Project

The proposed future development of the EOWHF would consist of the ongoing development and operation of the landfill to the east of the existing EOHWF on lands owned by GFL.

The purpose of the undertaking is to provide an additional 15.1 million m³ of landfill disposal capacity over approximately 20 years of operation at the maximum annual fill rate of 755,000 tonnes per year.

No changes to the approved annual fill rate or site access route are proposed

	2020				2021				2022				2023				2024				2025															
	Q1	Q2	Q3	Q4	Q1	Q2	Q3	Q4	Q1	Q2	Q3	Q4	Q1	Q2	Q3	Q4	Q1	Q2	Q3	Q4	Q1	Q2	Q3	Q4												
EA Terms of Reference (ToR)	[Green bar]																																			
Undertake EA Baseline Studies	[Green bar]																																			
Environmental Assessment (EA)									[Green bar]																											
Environmental Compliance Approval													[Green bar]																							
Land Use																	[Green bar]																			
Construction																					[Green bar]															

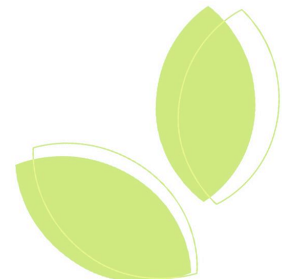
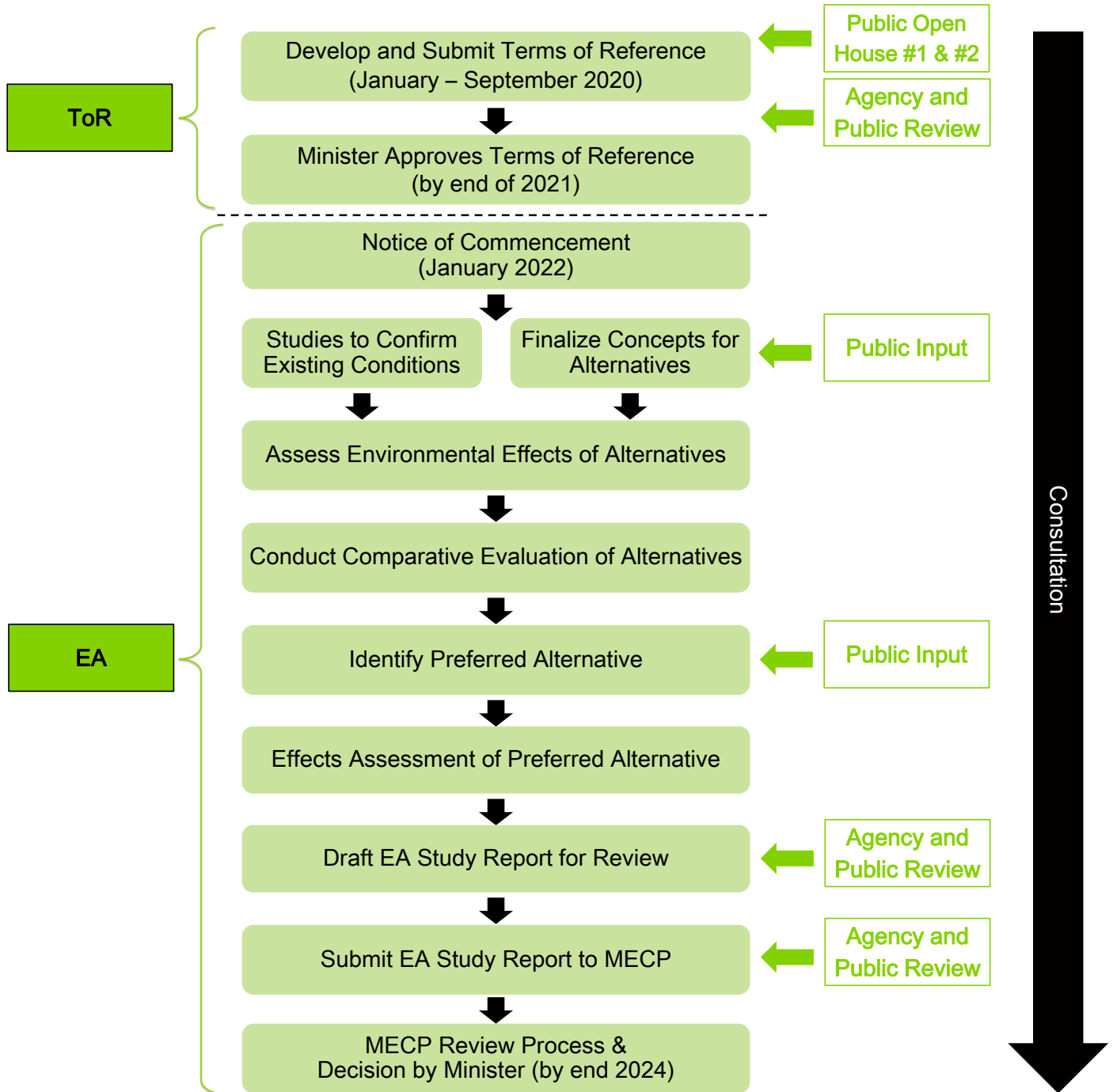
The lands being considered for the future development include lands within the existing EOWHF and the eastern half of Lot 16, Lots 14 and 15, and part of Lot 13 of Concession 10 east of the EOWHF, which has an area of approximately 233 hectares.



Proposed Future Development Area

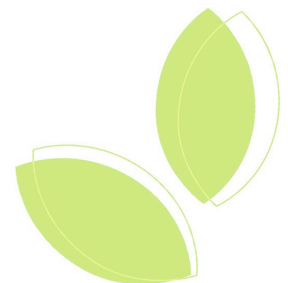


Environmental Assessment Process Overview



The Rationale for the Undertaking

- There is a need for the future development of the EOWHF as it is a significant component of the provincial waste management network and infrastructure in a region lacking in sufficient and secure long-term disposal capacity
- GFL is providing waste management services and facilities that are well positioned to continue to support Ontario's transition to becoming waste-free and achieving a circular economy, while supporting a reduction in GHG production and the amount of waste going to landfill, consistent with provincial legislation
- Continued operation of the EOWHF aligns with the Province of Ontario's Strategy for a Waste Free Ontario, Climate Change Action Plan goal of reducing GHG emissions, and the Made in Ontario Environment Plan to reduce litter and waste in communities
- The future development of the EOWHF is required to continue sustainable business operations and to continue providing the essential financial support for a wide range of additional services and programs



Alternatives to the Undertaking

GFL identified a range of ‘alternatives to’ the undertaking (or project) for providing long term disposal capacity that are appropriate and reasonable for them (a private sector company) to implement.

1. Do nothing
2. Redirect waste to a disposal facility elsewhere
3. Develop a thermal treatment facility at the EOWHF
4. Develop additional disposal capacity at the EOWHF

Each of the ‘alternatives to’ were considered in the context of their ability to meet the needs of the Eastern Ontario region and the business opportunity identified by GFL.

Future development and ongoing operation of the EOWHF landfill is the only reasonable option for GFL, its customers and Ontario. This alternative will also support the ongoing operation of the integrated facilities at the EOWHF including the organics composting facility and the landfill gas to energy facility.

The other alternatives do not address GFL’s business opportunity to meet long-term customer commitments or avoid business risks, and are not supportive of the Ontario government priorities of addressing waste diversion and climate change.



Alternative Methods

Alternative methods are different ways of implementing the proposed undertaking. Two preliminary alternative methods have been identified for consideration as follows:

Alternative 1

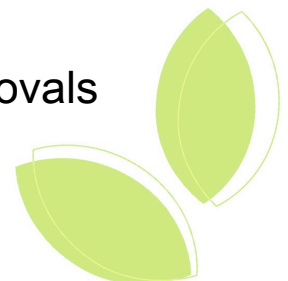
- Utilizes three stages oriented east-west, similar to the existing EOWHF landfill

Alternative 2

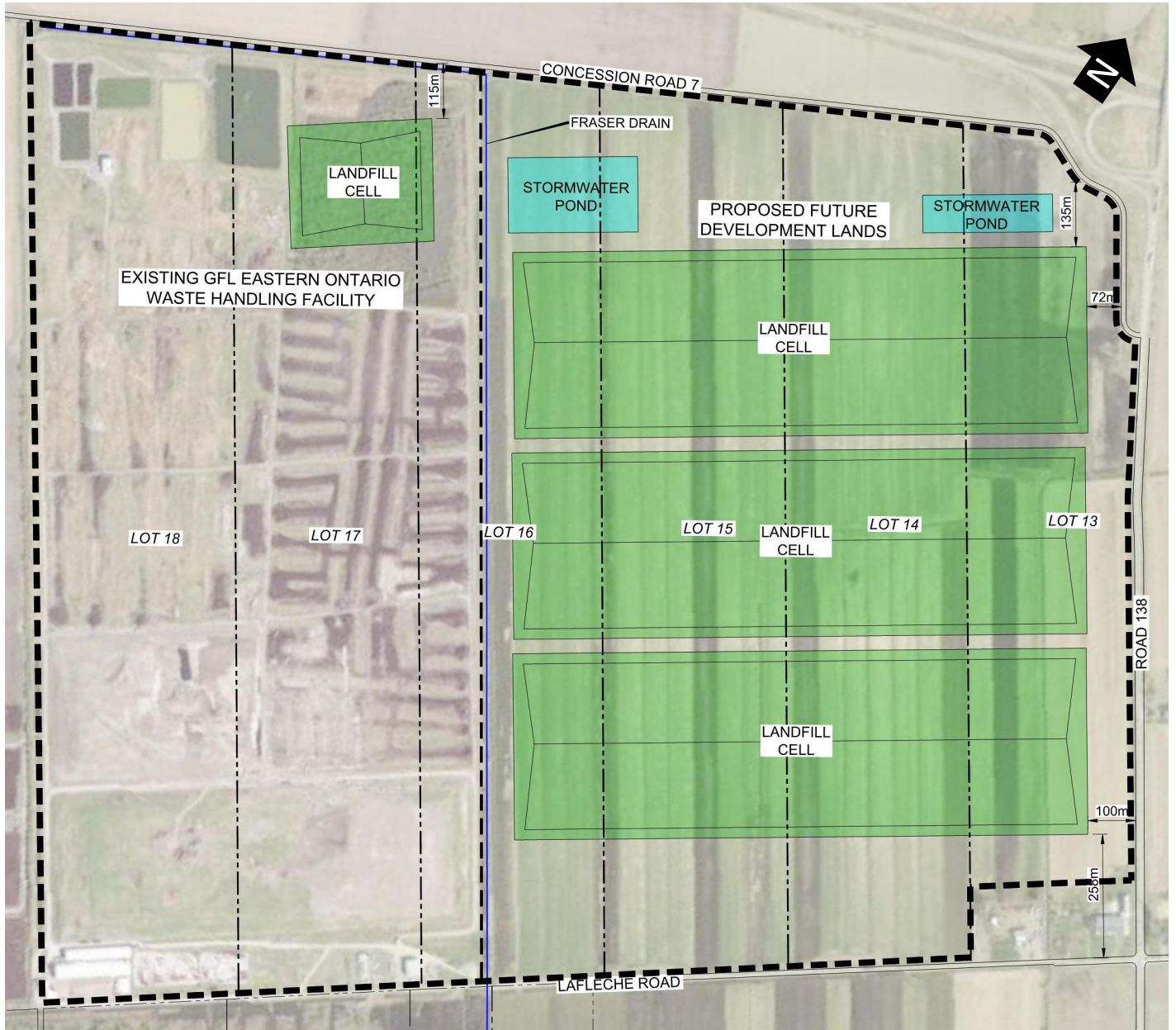
- Utilizes three stages oriented north-south

Both Alternatives

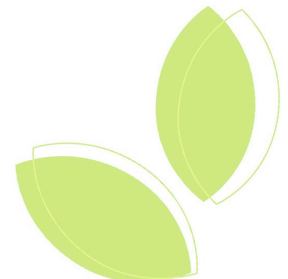
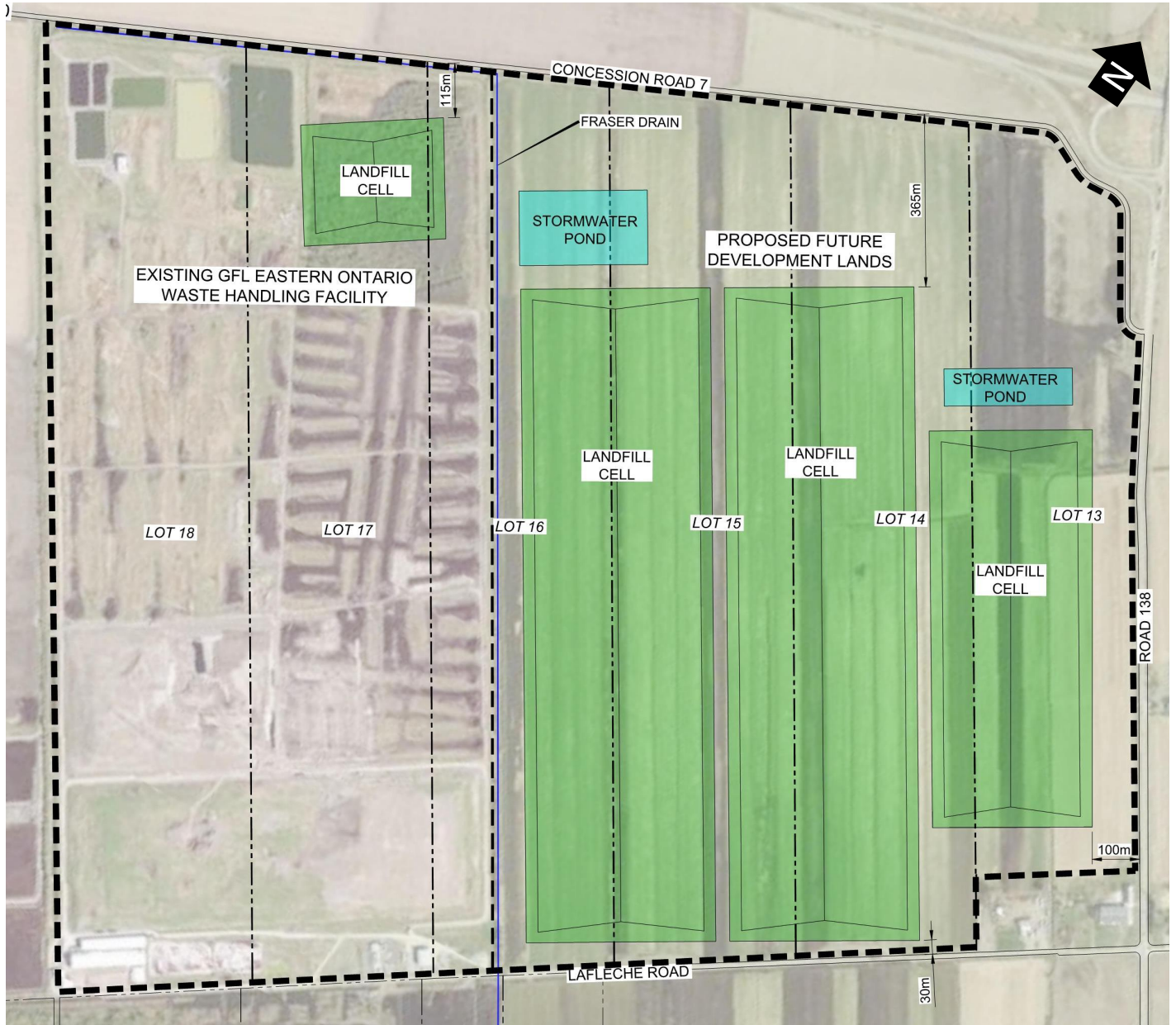
- Landfill volume of approximately 15.1 million m³, based on the approved fill rate of 755,000 tonnes/year over a 20 year planning period
- A relatively small volume of capacity may be available in the northeast corner of the existing EOWHF site
- Landfill stages would be developed according to similar width, height/depth, spacing and side slopes as the existing landfill
- Typical buffer widths of approximately 100 meters from property boundaries, with some exceptions
- Visual screening around the perimeter through combination of berm and vegetation
- Utilize existing site access road and infrastructure including gas to energy plant and leachate treatment plant
- Official Plan and Zoning By-Law amendment approvals are anticipated



Alternative 1

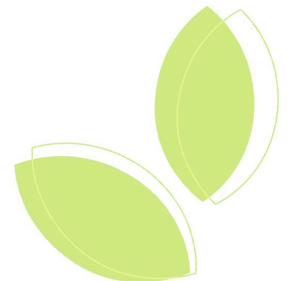


Alternative 2



The proposed evaluation process for the EA includes:

- Describe the environment potentially affected (existing conditions) based on evaluation criteria
- Describe the conceptual design details for the alternative methods (i.e., the two expansion alternatives), including mitigation measures
- Predict the environmental effects from each alternative based on evaluation criteria
- Refine mitigation measures and predict net effects on the environment
- Comparatively evaluate alternatives based on evaluation criteria
- Identify the preferred alternative
- Effects assessment of the preferred alternative



The proposed evaluation and assessment criteria considers environments as outlined by the MECP including Natural Environment, Socio-Economic Environment, Cultural Environment and Built Environment. Proposed criteria will consider potential effects on:

Natural Environment

- Atmospheric Environment (Air Quality, Noise, Odour)
- Geology, Hydrogeology, and Groundwater (Quality and Quantity)
- Surface Water Environment (Quality and Quantity)
- Ecological Environment (Terrestrial and Aquatic Ecosystems)

Socio-Economic Environment

- Economic effects/benefits
- Local community
- Visual landscape

Cultural Environment

- Archaeological and Cultural Heritage Resources

Built Environment

- Transportation
- Current and Planned Future Land Use
- Agricultural and Aggregate Extraction

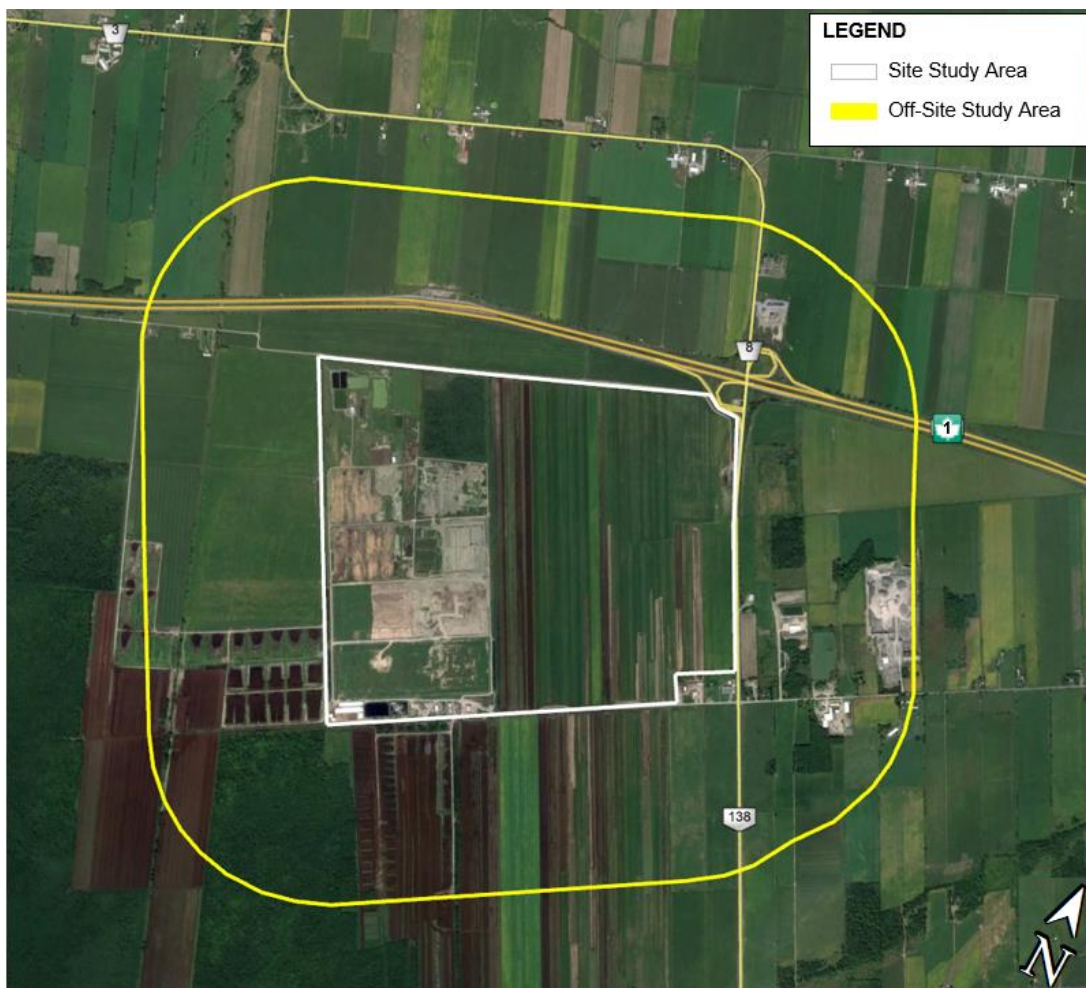


Study Areas

Potential effects are proposed to be considered in terms of the following study areas:

On-site study area – the existing EOWHF, and the future development area comprising the eastern half of Lot 16, Lots 14 and 15, and part of Lot 13 of Concession 10 east of the EOWHF

Off-site study area – the lands in the vicinity of the future development extending approximately 1 km from the on-site study area



Discipline specific studies will be carried out, as required, in support of the EA to obtain information needed to assess the alternatives based on the evaluation criteria, considering the:

- Description of the environment potentially affected
- Prediction of potential effects on the environment for each alternative
- Identification of mitigation measures and potential net effects on the environment for alternatives considered
- Comparative evaluation of the alternatives



Consultation and Engagement

Public consultation throughout the ToR and EA process will involve the local community, applicable agencies, Indigenous communities, and other interested and/or affected stakeholders.

Consultation will include:

- Notification through **local newspapers, by letter or email**
- **Public Open Houses** (two during ToR and two during the EA)
- Posting of materials on the company project website www.gflenv.com/moose-creek-eowhf

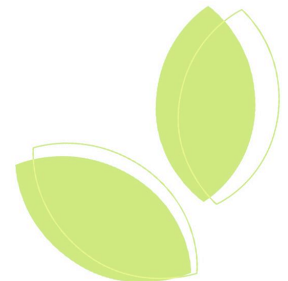
GFL will receive and respond to **comments by telephone, email and in writing.**

If you wish to have a meeting with GFL or members of the project study team, please let us know.



Next Steps

- **Input received** through this Public Open House and other comments received will be used to develop and refine the proposed ToR for the EA
- A **second Open House** on the ToR will be held in Spring 2020
- GFL will circulate the **draft ToR** in Summer 2020 for review and comment
- The ToR will be finalized based on comments received on the draft and formally submitted to MECP for review and approval
- A 30-day review period commences upon submission of the proposed ToR to the MECP
- Public, agencies, Indigenous communities, and other key stakeholders can review and submit comments on the ToR to the MECP during this review period
- Notification of the draft and final ToR submissions will be provided in the local newspapers, by letter/email and on our website www.gflenv.com/moose-creek-eowhf





Thank you

If you would like to be added to the project mailing list or have project-related questions, please contact:

**Mr. Greg van Loenen
Environmental Compliance Officer
GFL Environmental Inc.
17125 Lafleche Road, Moose Creek, Ontario K0C 1W0
Telephone: 613-538-2776 ext. 223
Fax: 613-538-2779
Email: gvanloenen@gflenv.com**

**GFL and the Project Team thank you for your
attendance and comments on the project**



Développement futur de l'installation de traitement des déchets de l'Est de l'Ontario



1^{ere} activité publique d'information sur le Cadre de références de l'évaluation environnementale



30 Janvier 2020

Bienvenue

Bienvenue à la **première activité publique d'information** sur le cadre de références du projet d'agrandissement du centre de traitement des matières résiduelles de l'Est de l'Ontario (EOWHF)

Cette **activité publique d'information** vise à:

- Présenter un aperçu du projet
- Échanger sur l'élaboration et le contenu du cadre de références
- Présenter la démarche d'évaluation environnementale
- Informer sur:
 - La justification du projet et les divers scénarios envisagés
 - Les critères et les étapes du processus d'évaluation environnementale proposé
 - La démarche de consultation prévue pour le cadre de références et l'évaluation environnementale

**Veillez consulter les documents disponibles.
Le personnel et les conseillers de GFL se feront un plaisir
de répondre à vos questions.**

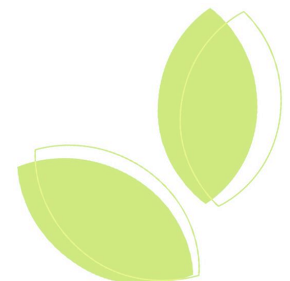
À propos de GFL

GFL Environmental Inc. est le propriétaire et le gestionnaire du centre de traitement de matières résiduelles de l'Est de l'Ontario (EOWHF) situé à Moose Creek.

Les **principes directeurs** de GFL sont transmis à tous nos employés, partenaires d'affaires, fournisseurs et clients afin de s'assurer que tous oeuvrent vers l'atteinte d'objectifs communs: **protéger l'environnement, soutenir la communauté, préserver la santé et la sécurité de nos employés et offrir à nos clients un service de grande qualité.**

Les **valeurs de GFL** se reflètent dans notre engagement à:

- Minimiser les impacts sur le milieu
- Encourager les activités économiques responsables à l'égard de l'environnement
- Accroître notre offre de services environnementaux
- Continuer de respecter les règles et exigences environnementales en vigueur
- Minimiser la production de déchets et l'enfouissement en encourageant le recyclage, le compostage, la décontamination des sols et des eaux, en réduisant notre consommation d'énergie et de matières premières, ainsi qu'en diminuant les émissions de gaz à effet de serre



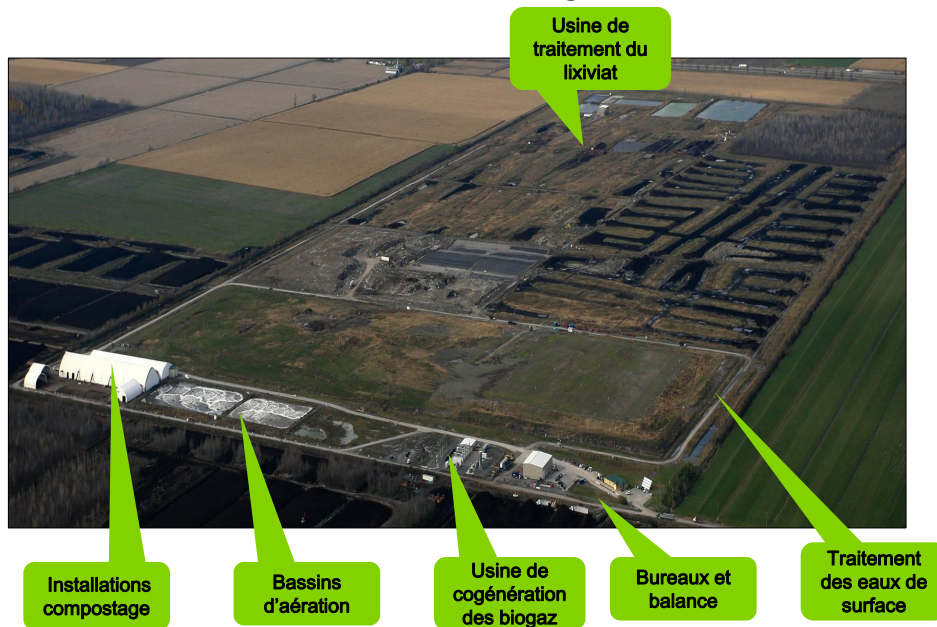
GFL s'engage à contribuer, de diverses façons, à l'amélioration et au développement durable des communautés dans lesquelles nous sommes présents, comme par exemples:

- Redevances annuelles remises au Canton de Stormont Nord - 583 000\$ en 2018
- Création d'emplois dans la communauté; plus de 45 emplois à temps plein
- Soutien aux organismes d'entraide, associations sportives, événements et installations communautaires (aréna de Finch, piscine de Moose Creek)
- Organisation d'activités éducatives et visites de nos installations pour la population, les écoles, les gens d'affaires et divers groupes du milieu
- Soutien à divers projets de recherche en environnement
- Collecte d'objets redistribués en partenariat avec *Habitat pour l'humanité Canada*
- Collaboration avec la société d'horticulture locale pour l'aménagement d'une aire de pollinisation sur le site actuel
- Participation aux travaux du Conseil canadien du compost et du MECP dans l'élaboration de la stratégie de gestion des matières organiques dans le cadre du programme *Zéro déchets* de l'Ontario
- Projet d'utilisation du biogaz généré par le site d'enfouissement comme source d'énergie pour aider les entreprises locales et attirer de nouveaux investissements dans la région



Activités au centre de traitement EOWHF

Le Centre de traitement EOWHF est situé dans le Canton de Stormont-Nord, à environ 5 km au nord-nord-ouest du village de Moose Creek et à 5 km à l'est du village de Casselman.



- Installation importante dans le réseau provincial de gestion des matières résiduelles
- Depuis l'année 2000, GFL est un fier partenaire des citoyens, municipalités et entreprises de l'Est de l'Ontario
- Plus de 500 villages, villes et communautés autochtones dans l'Est de l'Ontario font appel à nos services
- Notre gamme de services comprend le compostage des matières organiques, la collecte des résidus électroniques et des pneus et un dépôt pour les citoyens, en plus de l'enfouissement
- Plus de 45 employés à temps plein
- Depuis 20 ans, GFL a investi plusieurs millions \$ dans la communauté pour l'achat de biens et de services
- Dans le cadre de ses activités, GFL accorde d'importants contrats de services en sous-traitance auprès d'entreprises et de ressources externes
- Activités éducatives et de recherche auprès de divers groupes et institutions d'enseignement

Contribution aux objectifs de l'Ontario pour la gestion des matières résiduelles

Le Centre de traitement EOWHF soutient de plusieurs façons la *Loi favorisant un Ontario sans déchets (Waste Free Ontario Act)* et le plan ontarien *Préserver et protéger notre environnement pour les générations futures*, comme par exemples:

- Minimiser l'enfouissement, en mettant à la disposition du milieu le plus grand centre de compostage en Ontario pouvant traiter les résidus de table et organiques et produire un compost de grande qualité
- Traiter les matières organiques dans une installation de compostage en appui au projet de bannissement de l'Ontario et pour réduire les gaz à effet de serre en évitant la production de méthane généré lors de la décomposition des matières organiques
- Capter le méthane et produire 4,5 MW d'énergie renouvelable pour le réseau d'Ontario Power (alimentant environ 4 000 foyers). Cette production pourrait s'accroître avec le biogaz généré dans le projet d'agrandissement.
- Collecter et récupérer les pneus, les résidus et produits électriques et électroniques
- Planifier l'implantation de serres (ou d'installations comparables) sur le site du centre de traitement EOWHF qui seraient alimentées avec l'énergie générée à l'aide des biogaz du site d'enfouissement



Le projet proposé

Le projet d'agrandissement du centre de traitement EOWHF vise à continuer les activités actuelles d'enfouissement dans la portion est du site actuel appartenant à GFL.

Le projet vise à fournir une capacité d'enfouissement additionnelle de 15,1 million m³ échelonnée sur une période d'environ 20 ans, basé sur un tonnage maximal d'enfouissement de 755 000 tonnes/année.

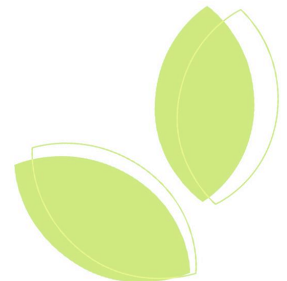
Aucun changement prévu quant au tonnage annuel autorisé et aux routes pour accéder au site.

	2020				2021				2022				2023				2024				2025			
	Q1	Q2	Q3	Q4	Q1	Q2	Q3	Q4	Q1	Q2	Q3	Q4	Q1	Q2	Q3	Q4	Q1	Q2	Q3	Q4	Q1	Q2	Q3	Q4
EA Terms of Reference (ToR)	█																							
Undertake EA Baseline Studies	█				█																			
Environmental Assessment (EA)									█				█											
Environmental Compliance Approval													█											
Land Use													█											
Construction																	█							

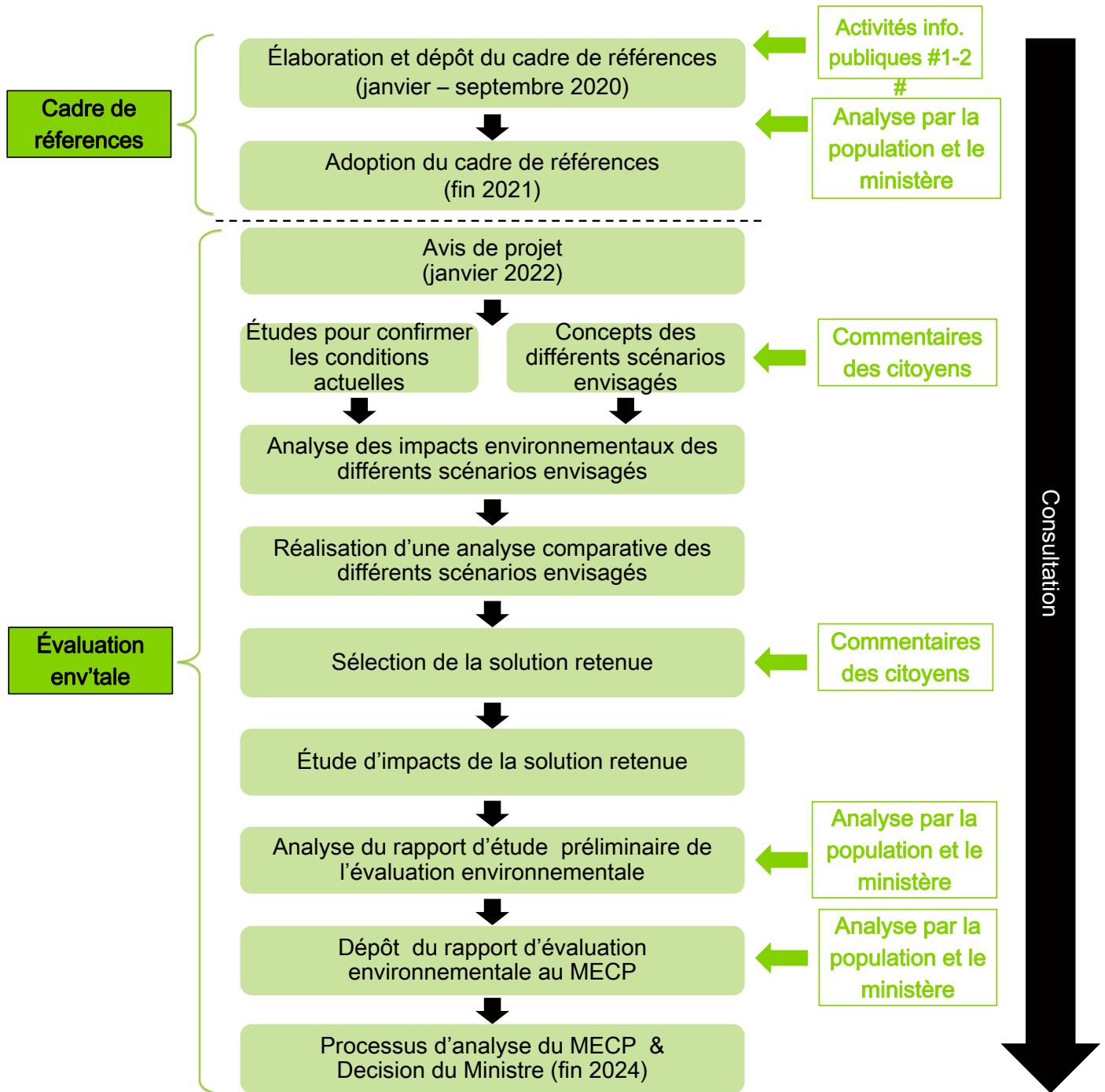
Les terrains envisagés pour l'agrandissement du site sont situés sur la propriété du centre de traitement EOWHF actuel ainsi que dans la portion est du lot 16, des lots 14 et 15, ainsi qu'une portion du lot 13 de la Concession 10 est du centre de traitement EOWHF, qui a une superficie d'environ 233 hectares.



Zone proposée pour le projet d'agrandissement



Aperçu du processus d'évaluation environnementale



Justification du projet

- L'agrandissement du centre de traitement EOWHF est nécessaire puisqu'il constitue une composante importante du réseau provincial des installations de gestion des matières résiduelles et qu'il est situé dans une région ayant des capacités insuffisantes de traitement sécuritaire et à long terme
- GFL offre des services et des installations de gestion des matières résiduelles qui aident l'Ontario dans sa transition vers le *Zéro Déchets* et pour une économie circulaire, tout en contribuant, en lien avec la réglementation provinciale, à réduire les gaz à effet de serre et l'enfouissement de déchets
- Le maintien des activités du centre de traitement EOWHF s'inscrit dans la stratégie *Zéro déchets* du gouvernement ontarien, le Plan d'action contre les changements climatiques et la réduction des gaz à effet de serre, ainsi que du Plan environnemental de l'Ontario pour préserver et protéger le milieu et réduire les déchets dans nos collectivités
- L'agrandissement du centre de traitement EOWHF est nécessaire pour le maintien d'activités économiques durables et pour continuer de soutenir financièrement divers services et programmes dans le milieu

Divers scénarios envisagés

GFL a envisagé la pertinence et la faisabilité (pour une entreprise privée) de divers scénarios pour répondre aux besoins à long terme de disposition du milieu:

1. Ne rien faire
2. Rediriger les matières vers un autre centre de traitement ailleurs
3. Construire une centrale de traitement thermique sur le site actuel du EOWHF
4. Augmenter la capacité d'enfouissement du centre de traitement EOWHF

Tous les scénarios ont été analysés par GFL selon les besoins de l'Est de l'Ontario et leur faisabilité économique.

L'agrandissement des installations actuelles du centre de traitement EOWHF est le seul scénario envisageable pour GFL, ses clients et la province. De plus, ce scénario permettrait de soutenir l'ensemble des activités actuellement en cours au site EOWHF, comme le compostage des matières organiques et la production d'énergie à l'aide des biogaz.

Les autres scénarios ne peuvent permettre à GFL de respecter ses engagements à long terme auprès de ses clients et ne répondent pas aux objectifs du gouvernement de l'Ontario pour la valorisation des déchets et la lutte contre les changements climatiques.

Les **scénarios de réalisation** sont différentes façons de réaliser le projet. Deux possibilités de scénarios ont été retenues:

Scénario 1

- En trois phases - dans l'axe est-ouest - comme le site d'enfouissement actuel

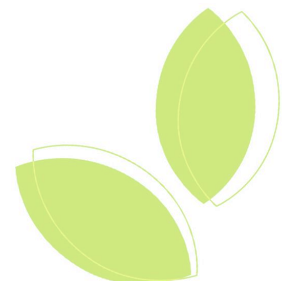
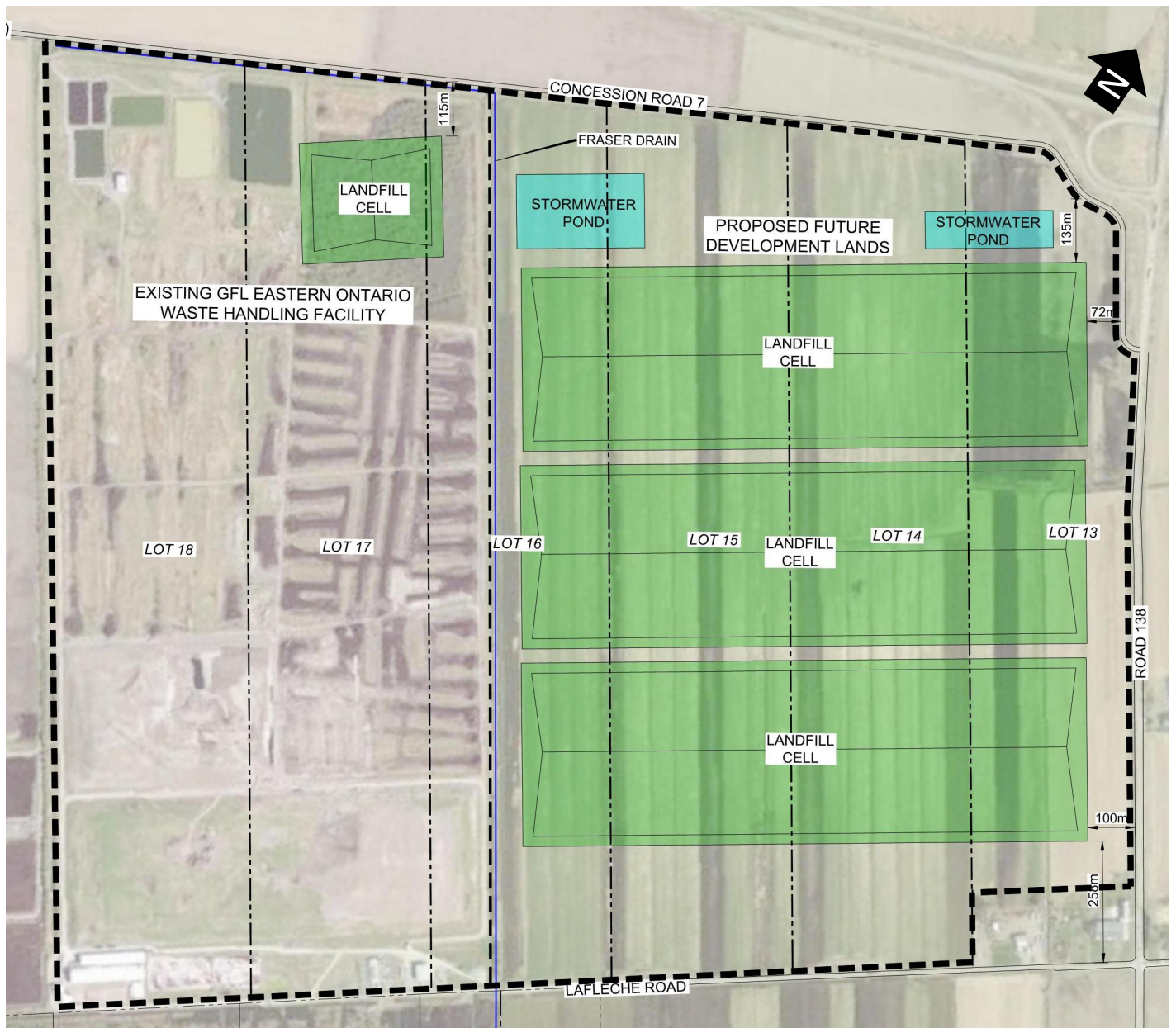
Scénario 2

- En trois phases – dans l'axe nord-sud

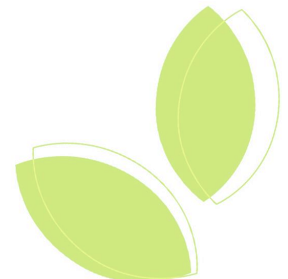
Caractéristiques des deux scénarios

- Capacité d'enfouissement d'environ 15,1 million m³, échelonnée sur une période d'environ 20 ans, basée sur un tonnage annuel moyen de 755 000 tonnes
- Une petite quantité de matières pourrait être enfouie dans le secteur nord-est du site actuel
- Tout comme le site actuel, toutes les phases du projet auraient des dimensions semblables quant à leur longueur, largeur, hauteur/profondeur, ainsi que leurs pentes et espacements
- De façon générale, une zone tampon d'environ 100m serait prévue en bordure des limites de la propriété
- Un écran visuel composé de végétaux et de talus serait aménagé aux limites de la propriété
- Les infrastructures et les routes d'accès actuelles desserviraient le centre de traitement, ainsi que les installations de cogénération et de traitement du lixiviat
- Des démarches d'autorisation relatives au zonage et au plan d'aménagement doivent être prévues

Scénario 1



Scénario 2



Le processus d'évaluation environnementale exige:

- Présenter les éléments dans l'environnement actuel pouvant être affectés à l'aide de critères d'analyse
- Présenter de façon détaillée les deux scénarios envisagés avec leurs moyens de mitigation respectifs
- Prévoir les impacts de chaque scénario sur le milieu environnant à l'aide de critères d'analyse
- Détailler les moyens de mitigation et prévoir leur impact sur le milieu environnant
- Réaliser une analyse comparative des scénarios à l'aide de critères d'évaluation
- Identifier le scénario retenu
- Évaluer les impacts du scénario retenu



Les critères d'analyse et d'évaluation environnementale sont définis par le MECP et comprennent les milieux naturel, socio-économique, culturel et bâti. Les critères proposés évalueront les impacts possibles sur, entre autres:

Milieu naturel

- Environnement atmosphérique (qualité de l'air, bruit, odeurs)
- Géologie, hydrogéologie et eaux souterraines (qualité et quantité)
- Eaux de surface (qualité et quantité)
- Milieu écologique (écosystèmes terrestre et aquatique)

Milieu socioéconomique

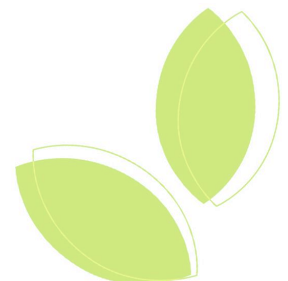
- Impact et retombées économiques
- Communauté locale
- Intégration visuelle dans le milieu

Milieu culturel

- Patrimoine culturel et archéologique

Milieu bâti

- Transport
- Aménagement du territoire actuel et futur
- Agriculture et extraction d'agrégats

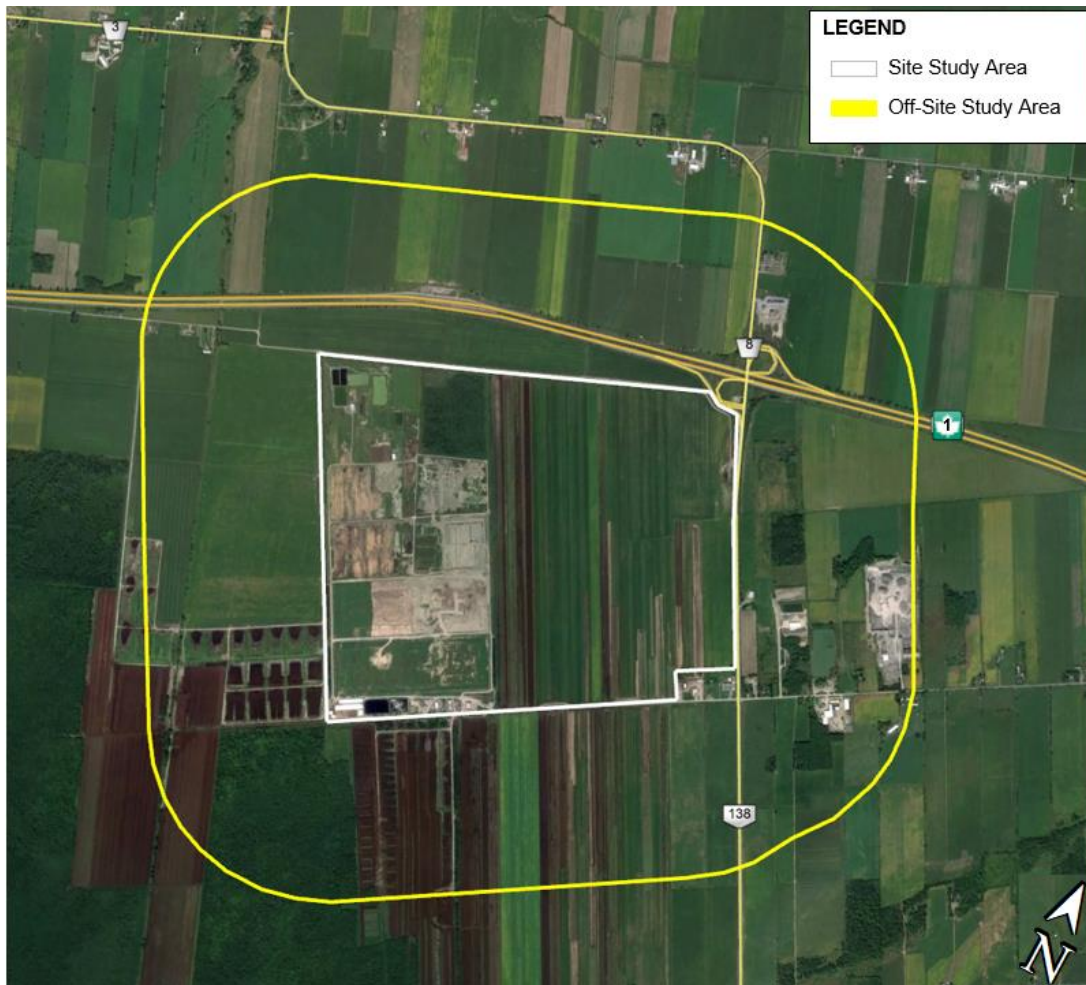


Secteurs d'étude

L'analyse des impacts potentiels sera réalisée pour les secteurs suivants:

Sur le site actuel du centre de traitement EOWHF – ainsi que la zone prévue pour le projet l'agrandissement comprenant la partie est du lot 16, les lots 14 et 15, ainsi qu'une portion du lot 13 de la concession 10 est du centre de traitement

En périphérie du site actuel – i.e. les terrains voisins du projet d'agrandissement dans un périmètre d'environ 1 km autour du site actuel du centre de traitement EOWHF



Tel qu'exigé pour appuyer le processus d'évaluation environnementale des scénarios envisagés, des études complémentaires sur des éléments précis seront réalisées relativement à :

- La description du milieu qui pourrait être affecté
- Les impacts possibles sur l'environnement de chacun des scénarios
- L'identification des moyens de mitigation et leur impact sur le milieu pour chacun des scénarios envisagés
- L'analyse comparative des scénarios



Consultation et exigences

Le processus de consultation entourant le cadre de références et l'évaluation environnementale doit intégrer les communautés locales, les agences gouvernementales, les groupes autochtones et toutes autres parties intéressées ou concernées.

Le processus de consultation doit inclure:

- Un avis publié dans les journaux locaux, par le courrier postal ou de façon électronique
- Des activités publiques d'information (deux pour le cadre de références et deux pour l'évaluation environnementale)
- Les documents d'information du projet doivent être publiés sur le site Internet de l'entreprise www.gflenv.com/moose-creek-eowhf

GFL se fera un plaisir de répondre aux questions qui lui seront soumises par **téléphone, courriel ou par la poste.**

N'hésitez pas à communiquer avec nous si vous souhaitez rencontrer un employé de GFL ou un membre de notre équipe de projet.



Prochaines étapes

- Les **commentaires émis**, entre autres, lors des activités publiques d'information serviront à l'élaboration du cadre de références pour l'évaluation environnementale
- Une **deuxième activité publique d'information** sur le cadre de références est prévue au printemps 2020
- GFL publiera au cours de l'été 2020 une version préliminaire du **cadre de références** afin de recueillir des avis et commentaires
- Une fois que les avis et commentaires sur la version préliminaires seront compilés, le cadre de références sera complété et déposé officiellement au MECP pour analyse et approbation
- La période d'analyse est d'une durée de 30 jours une fois que le cadre de références proposé est déposé au MECP
- Les citoyens, agences gouvernementales, communautés autochtones et toutes autres parties concernées peuvent soumettre des commentaires au MECP durant la période d'analyse du cadre de références
- Le dépôt des versions préliminaire et finale du cadre de références doit faire l'objet d'avis publics dans les journaux locaux, par courrier postal/électronique et sur le site Internet de l'entreprise:

www.gflenv.com/moose-creek-eowhf



Merci

Si vous désirez inscrire votre nom
à notre liste de diffusion du projet ou si vous voulez
soumettre une question, veuillez communiquer avec

Mr. Greg van Loenen
Responsable de la conformité environnementale
GFL Environmental Inc.
17125 route Lafleche, Moose Creek, Ontario K0C 1W0
Téléphone: 613-538-2776, poste 223
Télécopieur: 613-538-2779
Courriel: gvanloenen@gflenv.com

**GFL et son équipe de projet vous remercient
de votre participation et de vos commentaires sur le projet.**





Appendix I. Public Comment Form

PUBLIC OPEN HOUSE #1
Thursday, January 30th, 2020
4 p.m. – 8 p.m.

Moose Creek Recreation Centre, 4 St Polycarp St, Moose Creek, ON

Name: _____

Address: _____

Phone #: _____

Email: _____

Thank you for taking the time to provide us with your comments.
Please remember to put your comments in the Comment Box before you leave.

Comments can be provided by mail or email at any time during the Environmental Assessment process.
If you do not have time to submit your comment sheet today, please email, mail or fax your comments by February 14, 2020 to:

Mr. Greg van Loenen, Environmental Compliance Officer
GFL Environmental Inc.
17125 Lafleche Road, Moose Creek, Ontario K0C 1W0
Telephone: 613-538-2776 ext. 223
Fax: 613-538-2779
Email: gvanloenen@gflenv.com

1. My **interest** in the project is: (please check all that apply)

- | | |
|---|---|
| <input type="checkbox"/> residential property | <input type="checkbox"/> air quality (dust, noise, odour) |
| <input type="checkbox"/> business | <input type="checkbox"/> ecology |
| <input type="checkbox"/> member of interest group | <input type="checkbox"/> groundwater, surface water |
| <input type="checkbox"/> agency representative | <input type="checkbox"/> land use / visual |
| <input type="checkbox"/> other: _____ | <input type="checkbox"/> transportation |

2. Please provide any **general comments** about the information presented at this Public Open House.

All personal information included in a submission – such as name, address, telephone number and property location – is collected, maintained and disclosed by the Ministry of the Environment, Conservation and Parks for the purposes of transparency and consultation. The information is collected under the authority of the *Environmental Assessment Act* or is collected and maintained for the purpose of creating a record that is available to the general public as described in s. 37 of the *Freedom of Information and Protection of Privacy Act*. Personal information you submit will become part of a public record that is available to the general public unless you request that your personal information remain confidential. For more information, please contact the Ministry of the Environment, Conservation and Parks' Freedom of Information and Privacy Coordinator at 416-327-1434.

3. Do you have any additional comments, concerns or recommendations regarding the **current operations at the EOWHF?**

Yes No

4. After reviewing the information presented at this Public Open House, do you have any additional comments, concerns, or recommendations regarding the **rationale for the proposed project?**

Yes No

5. Do you have any specific comments, concerns or recommendations regarding the **Alternatives** as presented?

Yes No

6. Do you have any specific comments, concerns or recommendations regarding the **Evaluation Criteria** to be used in the assessment of the Alternatives as presented?

Yes No

7. Do you have any comments or questions regarding our **proposed consultation program?**

Yes No

8. Are there any other issues that you feel GFL should consider in the **development of the Terms of Reference?**

Yes No

PORTES OUVERTES #1

Jeudi le 30 janvier 2020

16h00 – 20h00

Moose Creek Recreation Centre, 4 St Polycarp St, Moose Creek, ON

Nom : _____

Adresse : _____

Téléphone : _____

Courriel : _____

Merci d'avoir pris le temps de nous faire part de vos commentaires.

N'oubliez pas de mettre vos commentaires dans la boîte de commentaires avant de partir.

Les commentaires peuvent être envoyés par la poste ou par courriel en tout temps pendant le processus d'évaluation environnementale.

Si vous n'avez pas le temps de soumettre votre fiche de commentaires aujourd'hui, veuillez envoyer vos commentaires par courriel, par la poste ou par télécopieur d'ici le 14 février 2020 à :

**M. Greg van Loenen, Responsable de la conformité environnementale
GFL Environmental Inc.**

17125 Lafleche Road, Moose Creek, Ontario K0C 1W0

Téléphone : 613-538-2776 poste. 223

Télécopieur : 613-538-2779

Courriel : gvanloenen@gflenv.com

1. **Mon intérêt** pour le projet est le suivant: (veuillez sélectionner tout ce qui s'applique)

- | | |
|---|---|
| <input type="checkbox"/> propriété résidentielle | <input type="checkbox"/> qualité de l'air (poussière, bruit, odeur) |
| <input type="checkbox"/> entreprise | <input type="checkbox"/> écologie |
| <input type="checkbox"/> membre d'un groupe d'intérêt | <input type="checkbox"/> eaux souterraines, eaux de surface |
| <input type="checkbox"/> représentant d'agence | <input type="checkbox"/> utilisation des terres/ visuel |
| <input type="checkbox"/> autre: _____ | <input type="checkbox"/> transport |

2. Veuillez nous mentionner vos commentaires généraux concernant l'information présentée aux portes ouvertes.

Tous les renseignements personnels inclus dans une présentation – comme le nom, l'adresse, le numéro de téléphone et l'emplacement de la propriété – sont recueillis, conservés et communiqués par le ministère de l'Environnement, Conservation et Parcs à des fins de transparence et de consultation. Les renseignements sont recueillis en vertu de la Loi sur l'évaluation environnementale ou sont recueillis et conservés aux fins de la création d'un document accessible au grand public, conformément à l'art. 37 de la Loi sur l'accès à l'information et Loi sur la protection de la vie privée. Les renseignements personnels que vous soumettez seront versés dans un dossier public qui est accessible au grand public, à moins que vous ne demandiez que vos renseignements personnels demeurent confidentiels. Pour de plus amples renseignements, veuillez communiquer avec le coordonnateur de l'accès à l'information et de la protection des renseignements personnels du ministère de l'Environnement, de la Conservation et des Parcs au 416-327-1434.

3. Avez-vous d'autres commentaires, préoccupations ou recommandations au sujet **des opérations en cours à l'EOWHF?**

Oui Non

4. Après avoir examiné l'information présentée aux portes ouvertes, avez-vous d'autres commentaires, préoccupations ou recommandations concernant la **justification du projet proposé?**

Oui Non

5. Avez-vous des commentaires, des préoccupations ou des recommandations spécifiques concernant les **solutions de rechange** présentées?

Oui Non

6. Avez-vous des commentaires, des préoccupations ou des recommandations spécifiques concernant les **critères d'évaluation** qui seront utilisés dans l'évaluation des solutions de rechange telles que présentées?

Oui Non

7. Avez-vous des commentaires ou des questions concernant notre **programme de consultation proposé?**

Oui Non

8. À votre avis, y a-t-il d'autres questions que GFL devrait prendre en considération dans l'élaboration du mandat?

Oui Non



Appendix J. Completed Public Comment Forms

PUBLIC OPEN HOUSE #1
Thursday, January 30th, 2020
4 p.m. – 8 p.m.

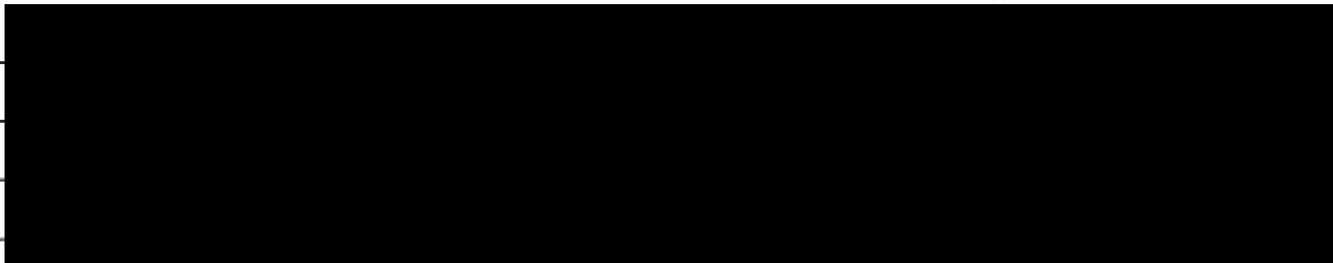
Moose Creek Recreation Centre, 4 St Polycarp St, Moose Creek, ON

Name: _____

Address: _____

Phone #: _____

Email: _____



Thank you for taking the time to provide us with your comments.
Please remember to put your comments in the Comment Box before you leave.

Comments can be provided by mail or email at any time during the Environmental Assessment process.
If you do not have time to submit your comment sheet today, please email, mail or fax your comments by February 14, 2020 to:

Mr. Greg van Loenen, Environmental Compliance Officer
GFL Environmental Inc.
17125 Lafleche Road, Moose Creek, Ontario K0C 1W0
Telephone: 613-538-2776 ext. 223
Fax: 613-538-2779
Email: gvanloenen@gflenv.com

1. My **interest** in the project is: (please check all that apply)

- | | |
|--|--|
| <input checked="" type="checkbox"/> residential property | <input checked="" type="checkbox"/> air quality (dust, noise, odour) |
| <input checked="" type="checkbox"/> business | <input checked="" type="checkbox"/> ecology |
| <input type="checkbox"/> member of interest group | <input type="checkbox"/> groundwater, surface water |
| <input type="checkbox"/> agency representative | <input type="checkbox"/> land use / visual |
| <input type="checkbox"/> other: _____ | <input type="checkbox"/> transportation |

2. Please provide any **general comments** about the information presented at this Public Open House.

Good explanation of your process & plan. & timeline / Schedule
- on paper it all sounds/looks good
but in reality the smell in Casselman is at a high level - daily @ various intensity.

All personal information included in a submission – such as name, address, telephone number and property location – is collected, maintained and disclosed by the Ministry of the Environment, Conservation and Parks for the purposes of transparency and consultation. The information is collected under the authority of the *Environmental Assessment Act* or is collected and maintained for the purpose of creating a record that is available to the general public as described in s. 37 of the *Freedom of Information and Protection of Privacy Act*. Personal information you submit will become part of a public record that is available to the general public unless you request that your personal information remain confidential. For more information, please contact the Ministry of the Environment, Conservation and Parks' Freedom of Information and Privacy Coordinator at 416-327-1434.

3. Do you have any additional comments, concerns or recommendations regarding the current operations at the EOWHF?

Yes No

I we currently smell the dump from our business & house.

I don't think you should expand until you learn to manage the current smell issue!

4. After reviewing the information presented at this Public Open House, do you have any additional comments, concerns or recommendations regarding the rationale for the proposed project?

Yes No

In the summer of 2018 (the worse year ever) the smell in Casselman was daily & very intense.

5. Do you have any specific comments, concerns or recommendations regarding the Alternatives as presented?

Yes No

last summer (2019) there were days (= 3-4/month) with no smell. However 2 days we actually checked the smell inside the physio clinic - that is not acceptable

6. Do you have any specific comments, concerns or recommendations regarding the Evaluation Criteria to be used in the assessment of the Alternatives as presented?

Yes No

7. Do you have any comments or questions regarding our proposed consultation program?

Yes No

Casselman business (ie our St-Hubert restaurant) has a lot of out of town visitors commutative on the smell. We are afraid it will cost business in terms of deterring people (Highway commuters)

8. Are there any other issues that you feel GFL should consider in the development of the Terms of Reference?

Yes No

from stopping again -
* we need the business

PUBLIC OPEN HOUSE #1
Thursday, January 30th, 2020
4 p.m. – 8 p.m.

Moose Creek Recreation Centre, 4 St Polycarp St, Moose Creek, ON

Name:

Address:

Phone #:

Email:



Thank you for taking the time to provide us with your comments.
Please remember to put your comments in the Comment Box before you leave.

Comments can be provided by mail or email at any time during the Environmental Assessment process.
If you do not have time to submit your comment sheet today, please email, mail or fax your comments by February 14, 2020 to:

Mr. Greg van Loenen, Environmental Compliance Officer
GFL Environmental Inc.
17125 Lafleche Road, Moose Creek, Ontario K0C 1W0
Telephone: 613-538-2776 ext. 223
Fax: 613-538-2779
Email: gvanloenen@gflenv.com

1. **My interest** in the project is: (please check all that apply)

- | | |
|--|--|
| <input checked="" type="checkbox"/> residential property | <input checked="" type="checkbox"/> air quality (dust, noise, odour) |
| <input type="checkbox"/> business | <input checked="" type="checkbox"/> ecology |
| <input type="checkbox"/> member of interest group | <input checked="" type="checkbox"/> groundwater, surface water |
| <input type="checkbox"/> agency representative | <input checked="" type="checkbox"/> land use / visual |
| <input type="checkbox"/> other: | <input type="checkbox"/> transportation |
| _____ | |

2. Please provide any **general comments** about the information presented at this Public Open House.

alot of information to absorb in a short period of time. Would appreciate having it available online.

All personal information included in a submission – such as name, address, telephone number and property location – is collected, maintained and disclosed by the Ministry of the Environment, Conservation and Parks for the purposes of transparency and consultation. The information is collected under the authority of the *Environmental Assessment Act* or is collected and maintained for the purpose of creating a record that is available to the general public as described in s. 37 of the *Freedom of Information and Protection of Privacy Act*. Personal information you submit will become part of a public record that is available to the general public unless you request that your personal information remain confidential. For more information, please contact the Ministry of the Environment, Conservation and Parks' Freedom of Information and Privacy Coordinator at 416-327-1434.

3. Do you have any additional comments, concerns or recommendations regarding the **current operations at the EOWHF?**

Yes No

small!

4. After reviewing the information presented at this Public Open House, do you have any additional comments, concerns, or recommendations regarding the **rationale for the proposed project?**

Yes No

not at the moment

5. Do you have any specific comments, concerns or recommendations regarding the **Alternatives** as presented?

Yes No

not at the moment

6. Do you have any specific comments, concerns or recommendations regarding the **Evaluation Criteria** to be used in the assessment of the Alternatives as presented?

Yes No

7. Do you have any comments or questions regarding our **proposed consultation program?**

Yes No

8. Are there any other issues that you feel GFL should consider in the **development of the Terms of Reference?**

Yes No

PUBLIC OPEN HOUSE #1
Thursday, January 30th, 2020
4 p.m. – 8 p.m.

Moose Creek Recreation Centre, 4 St Polycarp St, Moose Creek, ON

Name:

Address:

Phone #:

Email:

Thank you for taking the time to provide us with your comments.
Please remember to put your comments in the Comment Box before you leave.

Comments can be provided by mail or email at any time during the Environmental Assessment process.
If you do not have time to submit your comment sheet today, please email, mail or fax your comments by February 14, 2020 to:

Mr. Greg van Loenen, Environmental Compliance Officer
GFL Environmental Inc.
17125 Lafleche Road, Moose Creek, Ontario K0C 1W0
Telephone: 613-538-2776 ext. 223
Fax: 613-538-2779
Email: gvanloenen@gflenv.com

1. My interest in the project is: (please check all that apply)

- | | |
|--|--|
| <input checked="" type="checkbox"/> residential property | <input checked="" type="checkbox"/> air quality (dust, noise, odour) |
| <input type="checkbox"/> business | <input checked="" type="checkbox"/> ecology |
| <input type="checkbox"/> member of interest group | <input checked="" type="checkbox"/> groundwater, surface water |
| <input type="checkbox"/> agency representative | <input type="checkbox"/> land use / visual |
| <input type="checkbox"/> other: _____ | <input checked="" type="checkbox"/> transportation |

2. Please provide any general comments about the information presented at this Public Open House.

- I wish there was more of a presentation with general discussion and Q&A presented to a group as I am not the type to walk up to people and would benefit from listening to everyone's questions and concerns.

All personal information included in a submission – such as name, address, telephone number and property location – is collected, maintained and disclosed by the Ministry of the Environment, Conservation and Parks for the purposes of transparency and consultation. The information is collected under the authority of the *Environmental Assessment Act* or is collected and maintained for the purpose of creating a record that is available to the general public as described in s. 37 of the *Freedom of Information and Protection of Privacy Act*. Personal information you submit will become part of a public record that is available to the general public unless you request that your personal information remain confidential. For more information, please contact the Ministry of the Environment, Conservation and Parks' Freedom of Information and Privacy Coordinator at 416-327-1434.

3. Do you have any additional comments, concerns or recommendations regarding the **current operations at the EOWHF?**

Yes No

- For current operations, my concern or comment would be
#1 about the smell as ~~was~~ it's the easiest to "see"
#2 ecology, ground water, surface water
#3 transportation = amount of traffic going by my house. (large trucks, trailers)

4. After reviewing the information presented at this Public Open House, do you have any additional comments, concerns, or recommendations regarding the **rationale for the proposed project?**

Yes No

- Concerned of the size of the project. and how if we are being affected by the landfill at its current size, how much worst it could get when it's at its maximum.

5. Do you have any specific comments, concerns or recommendations regarding the **Alternatives** as presented?

Yes No

alternative 1 would be the one I choose if I had to choose only because I live directly south and this would slow down the timeline where the landfill would be at its closest.

6. Do you have any specific comments, concerns or recommendations regarding the **Evaluation Criteria** to be used in the assessment of the Alternatives as presented?

Yes No

Comment, make the information easily available with full transparency.

7. Do you have any comments or questions regarding our **proposed consultation program?**

Yes No

8. Are there any other issues that you feel GFL should consider in the **development of the Terms of Reference?**

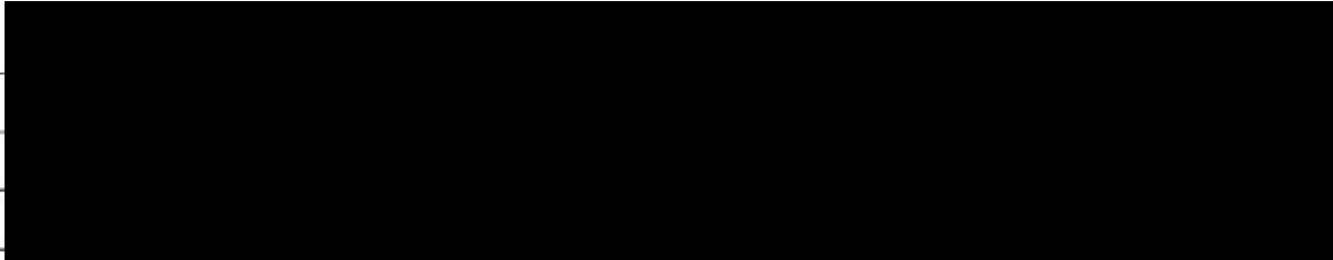
Yes No

- Final notes: Main concern for me is property value. I feel with the increased size of the landfill and potential effects of it will severely impact my property value.

PUBLIC OPEN HOUSE #1
Thursday, January 30th, 2020
4 p.m. – 8 p.m.

Moose Creek Recreation Centre, 4 St Polycarp St, Moose Creek, ON

Name:
Address:
Phone #:
Email:



Thank you for taking the time to provide us with your comments.
Please remember to put your comments in the Comment Box before you leave.

Comments can be provided by mail or email at any time during the Environmental Assessment process.
If you do not have time to submit your comment sheet today, please email, mail or fax your comments by February 14, 2020 to:

Mr. Greg van Loenen, Environmental Compliance Officer
GFL Environmental Inc.
17125 Lafleche Road, Moose Creek, Ontario K0C 1W0
Telephone: 613-538-2776 ext. 223
Fax: 613-538-2779
Email: gvanloenen@gflenv.com

1. My **interest** in the project is: (please check all that apply)

- | | |
|--|---|
| <input type="checkbox"/> residential property | <input type="checkbox"/> air quality (dust, noise, odour) |
| <input type="checkbox"/> business | <input type="checkbox"/> ecology |
| <input type="checkbox"/> member of interest group | <input type="checkbox"/> groundwater, surface water |
| <input type="checkbox"/> agency representative | <input type="checkbox"/> land use / visual |
| <input checked="" type="checkbox"/> other: <u>MUNICIPALITY</u> | <input type="checkbox"/> transportation |

2. Please provide any **general comments** about the information presented at this Public Open House.

THANK YOU FOR LISTENING -

WILL RESUBMIT MY COMMENTS FOR COUNCIL

All personal information included in a submission – such as name, address, telephone number and property location – is collected, maintained and disclosed by the Ministry of the Environment, Conservation and Parks for the purposes of transparency and consultation. The information is collected under the authority of the *Environmental Assessment Act* or is collected and maintained for the purpose of creating a record that is available to the general public as described in s. 37 of the *Freedom of Information and Protection of Privacy Act*. Personal information you submit will become part of a public record that is available to the general public unless you request that your personal information remain confidential. For more information, please contact the Ministry of the Environment, Conservation and Parks' Freedom of Information and Privacy Coordinator at 416-327-1434.

3. Do you have any additional comments, concerns or recommendations regarding the **current operations at the EOWHF?**

Yes No

4. After reviewing the information presented at this Public Open House, do you have any additional comments, concerns, or recommendations regarding the **rationale for the proposed project?**

Yes No

5. Do you have any specific comments, concerns or recommendations regarding the **Alternatives** as presented?

Yes No

6. Do you have any specific comments, concerns or recommendations regarding the **Evaluation Criteria** to be used in the assessment of the Alternatives as presented?

Yes No

7. Do you have any comments or questions regarding our **proposed consultation program?**

Yes No

8. Are there any other issues that you feel GFL should consider in the **development of the Terms of Reference?**

Yes No

PUBLIC OPEN HOUSE #1
Thursday, January 30th, 2020
4 p.m. – 8 p.m.

Moose Creek Recreation Centre, 4 St Polycarp St, Moose Creek, ON

Name: _____
 Address: _____
 Phone #: _____
 Email: _____

Thank you for taking the time to provide us with your comments.
Please remember to put your comments in the Comment Box before you leave.

Comments can be provided by mail or email at any time during the Environmental Assessment process.
If you do not have time to submit your comment sheet today, please email, mail or fax your comments by February 14, 2020 to:

Mr. Greg van Loenen, Environmental Compliance Officer
 GFL Environmental Inc.
 17125 Lafleche Road, Moose Creek, Ontario K0C 1W0
 Telephone: 613-538-2776 ext. 223
 Fax: 613-538-2779
 Email: gvanloenen@gflenv.com

1. My **interest** in the project is: (please check all that apply)

- | | |
|--|--|
| <input checked="" type="checkbox"/> residential property | <input checked="" type="checkbox"/> air quality (dust, noise, odour) |
| <input checked="" type="checkbox"/> business | <input checked="" type="checkbox"/> ecology |
| <input type="checkbox"/> member of interest group | <input checked="" type="checkbox"/> groundwater, surface water |
| <input type="checkbox"/> agency representative | <input type="checkbox"/> land use / visual |
| <input type="checkbox"/> other: _____ | <input type="checkbox"/> transportation |

2. Please provide any **general comments** about the information presented at this Public Open House.

I really would like to get a tour of the facility

All personal information included in a submission – such as name, address, telephone number and property location – is collected, maintained and disclosed by the Ministry of the Environment, Conservation and Parks for the purposes of transparency and consultation. The information is collected under the authority of the *Environmental Assessment Act* or is collected and maintained for the purpose of creating a record that is available to the general public as described in s. 37 of the *Freedom of Information and Protection of Privacy Act*. Personal information you submit will become part of a public record that is available to the general public unless you request that your personal information remain confidential. For more information, please contact the Ministry of the Environment, Conservation and Parks' Freedom of Information and Privacy Coordinator at 416-327-1434.

3. Do you have any additional comments, concerns or recommendations regarding the **current operations at the EOWHF?**

Yes No

4. After reviewing the information presented at this Public Open House, do you have any additional comments, concerns, or recommendations regarding the **rationale for the proposed project?**

Yes No

5. Do you have any specific comments, concerns or recommendations regarding the **Alternatives** as presented?

Yes No

6. Do you have any specific comments, concerns or recommendations regarding the **Evaluation Criteria** to be used in the assessment of the Alternatives as presented?

Yes No

7. Do you have any comments or questions regarding our **proposed consultation program?**

Yes No

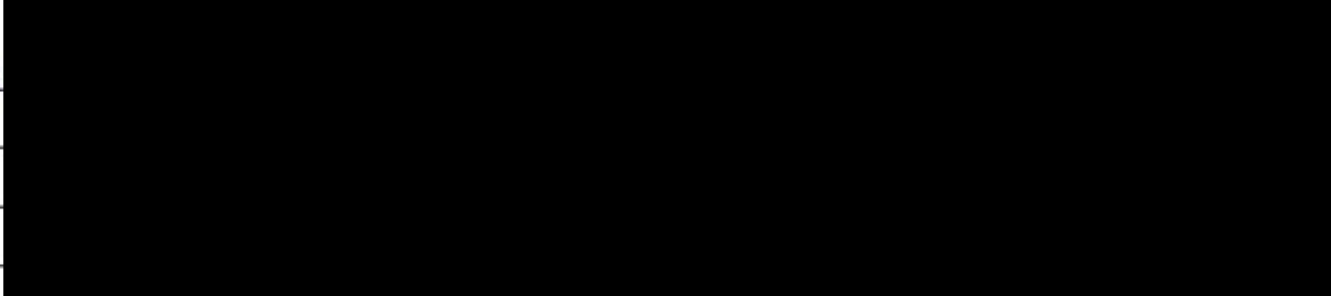
8. Are there any other issues that you feel GFL should consider in the **development of the Terms of Reference?**

Yes No

PUBLIC OPEN HOUSE #1
Thursday, January 30th, 2020
4 p.m. – 8 p.m.

Moose Creek Recreation Centre, 4 St Polycarp St, Moose Creek, ON

Name:
Address:
Phone #:
Email:



Thank you for taking the time to provide us with your comments.
Please remember to put your comments in the Comment Box before you leave.

Comments can be provided by mail or email at any time during the Environmental Assessment process.
If you do not have time to submit your comment sheet today, please email, mail or fax your comments by February 14, 2020 to:

Mr. Greg van Loenen, Environmental Compliance Officer
GFL Environmental Inc.
17125 Lafleche Road, Moose Creek, Ontario K0C 1W0
Telephone: 613-538-2776 ext. 223
Fax: 613-538-2779
Email: gvanloenen@gflenv.com

1. My interest in the project is: (please check all that apply)

- | | |
|---|---|
| <input type="checkbox"/> residential property | <input type="checkbox"/> air quality (dust, noise, odour) |
| <input type="checkbox"/> business | <input type="checkbox"/> ecology |
| <input type="checkbox"/> member of interest group | <input type="checkbox"/> groundwater, surface water |
| <input type="checkbox"/> agency representative | <input type="checkbox"/> land use / visual |
| <input type="checkbox"/> other:
_____ | <input type="checkbox"/> transportation |

2. Please provide any general comments about the information presented at this Public Open House.

Very Supportive
Job Creation and future use of
methane gas.

All personal information included in a submission – such as name, address, telephone number and property location – is collected, maintained and disclosed by the Ministry of the Environment, Conservation and Parks for the purposes of transparency and consultation. The information is collected under the authority of the *Environmental Assessment Act* or is collected and maintained for the purpose of creating a record that is available to the general public as described in s. 37 of the *Freedom of Information and Protection of Privacy Act*. Personal information you submit will become part of a public record that is available to the general public unless you request that your personal information remain confidential. For more information, please contact the Ministry of the Environment, Conservation and Parks' Freedom of Information and Privacy Coordinator at 416-327-1434.

3. Do you have any additional comments, concerns or recommendations regarding the **current operations at the EOWHF?**

Yes No

4. After reviewing the information presented at this Public Open House, do you have any additional comments, concerns, or recommendations regarding the **rationale for the proposed project?**

Yes No

5. Do you have any specific comments, concerns or recommendations regarding the **Alternatives** as presented?

Yes No

6. Do you have any specific comments, concerns or recommendations regarding the **Evaluation Criteria** to be used in the assessment of the Alternatives as presented?

Yes No

7. Do you have any comments or questions regarding our **proposed consultation program?**

Yes No

8. Are there any other issues that you feel GFL should consider in the **development of the Terms of Reference?**

Yes No

PUBLIC OPEN HOUSE #1
Thursday, January 30th, 2020
4 p.m. – 8 p.m.

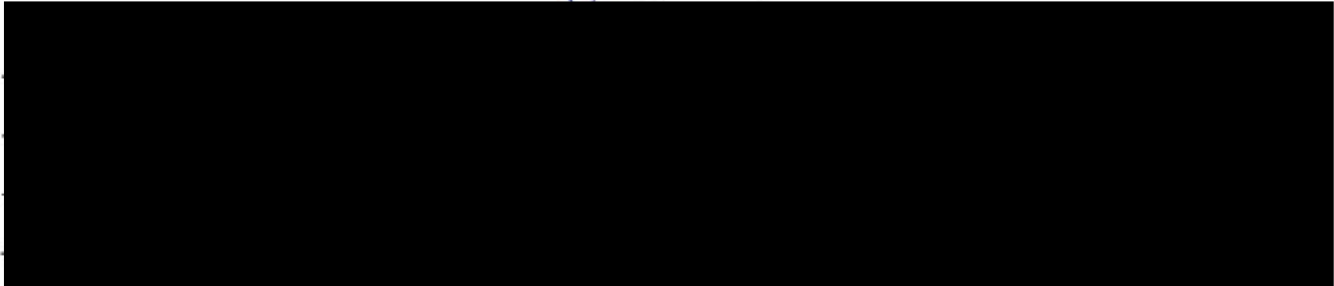
Moose Creek Recreation Centre, 4 St Polycarp St, Moose Creek, ON

Name:

Address:

Phone #:

Email:



Thank you for taking the time to provide us with your comments.
Please remember to put your comments in the Comment Box before you leave.

Comments can be provided by mail or email at any time during the Environmental Assessment process.
If you do not have time to submit your comment sheet today, please email, mail or fax your comments by February 14, 2020 to:

Mr. Greg van Loenen, Environmental Compliance Officer
GFL Environmental Inc.
17125 Lafleche Road, Moose Creek, Ontario K0C 1W0
Telephone: 613-538-2776 ext. 223
Fax: 613-538-2779
Email: gvanloenen@gflenv.com

1. **My interest** in the project is: (please check all that apply)

- | | |
|--|--|
| <input checked="" type="checkbox"/> residential property | <input checked="" type="checkbox"/> air quality (dust, noise, odour) |
| <input type="checkbox"/> business | <input type="checkbox"/> ecology |
| <input type="checkbox"/> member of interest group | <input type="checkbox"/> groundwater, surface water |
| <input type="checkbox"/> agency representative | <input type="checkbox"/> land use / visual |
| <input type="checkbox"/> other: | <input type="checkbox"/> transportation |

2. Please provide any **general comments** about the information presented at this Public Open House.

All personal information included in a submission – such as name, address, telephone number and property location – is collected, maintained and disclosed by the Ministry of the Environment, Conservation and Parks for the purposes of transparency and consultation. The information is collected under the authority of the *Environmental Assessment Act* or is collected and maintained for the purpose of creating a record that is available to the general public as described in s. 37 of the *Freedom of Information and Protection of Privacy Act*. Personal information you submit will become part of a public record that is available to the general public unless you request that your personal information remain confidential. For more information, please contact the Ministry of the Environment, Conservation and Parks' Freedom of Information and Privacy Coordinator at 416-327-1434.

3. Do you have any additional comments, concerns or recommendations regarding the **current operations at the EOWHF?**

Yes No

The presentation is excellent
Our concern is smell - Please ensure
GFL can successfully handle the gas smell
before increasing cells.

4. After reviewing the information presented at this Public Open House, do you have any additional comments, concerns, or recommendations regarding the **rationale for the proposed project?**

Yes No

5. Do you have any specific comments, concerns or recommendations regarding the **Alternatives** as presented?

Yes No

6. Do you have any specific comments, concerns or recommendations regarding the **Evaluation Criteria** to be used in the assessment of the Alternatives as presented?

Yes No

7. Do you have any comments or questions regarding our **proposed consultation program?**

Yes No

8. Are there any other issues that you feel GFL should consider in the **development of the Terms of Reference?**

Yes No

PUBLIC OPEN HOUSE #1
Thursday, January 30th, 2020
4 p.m. – 8 p.m.

Moose Creek Recreation Centre, 4 St Polycarp St, Moose Creek, ON

Name:

Address:

Phone #:

Email:

Thank you for taking the time to provide us with your comments.
Please remember to put your comments in the Comment Box before you leave.

Comments can be provided by mail or email at any time during the Environmental Assessment process.
If you do not have time to submit your comment sheet today, please email, mail or fax your comments by February 14, 2020 to:

Mr. Greg van Loenen, Environmental Compliance Officer
GFL Environmental Inc.
17125 Lafleche Road, Moose Creek, Ontario K0C 1W0
Telephone: 613-538-2776 ext. 223
Fax: 613-538-2779
Email: gvanloenen@gflenv.com

1. My interest in the project is: (please check all that apply)

- | | |
|--|---|
| <input checked="" type="checkbox"/> residential property | <input type="checkbox"/> air quality (dust, noise, odour) |
| <input type="checkbox"/> business | <input type="checkbox"/> ecology |
| <input type="checkbox"/> member of interest group | <input type="checkbox"/> groundwater, surface water |
| <input type="checkbox"/> agency representative | <input type="checkbox"/> land use / visual |
| <input checked="" type="checkbox"/> other: <u>Adjoining landowner to GFL</u> | <input type="checkbox"/> transportation |

2. Please provide any general comments about the information presented at this Public Open House.

Good general presentation but I have to wait until more specific details are available. It may be advisable that the land adjacent to the 138 be kept apart for future commercial development of potential associated industries e.g. greenhouses.

All personal information included in a submission – such as name, address, telephone number and property location – is collected, maintained and disclosed by the Ministry of the Environment, Conservation and Parks for the purposes of transparency and consultation. The information is collected under the authority of the *Environmental Assessment Act* or is collected and maintained for the purpose of creating a record that is available to the general public as described in s. 37 of the *Freedom of Information and Protection of Privacy Act*. Personal information you submit will become part of a public record that is available to the general public unless you request that your personal information remain confidential. For more information, please contact the Ministry of the Environment, Conservation and Parks' Freedom of Information and Privacy Coordinator at 416-327-1434.

3. Do you have any additional comments, concerns or recommendations regarding the **current operations at the EOWHF?**

Yes No

4. After reviewing the information presented at this Public Open House, do you have any additional comments, concerns, or recommendations regarding the **rationale for the proposed project?**

Yes No

There is obviously needs for landfill capacity in eastern Ontario. The city of Ottawa, for example, has grown extensively over the last 40 years. As more homes are built, there will be competition with pre-existing landfills.

5. Do you have any specific comments, concerns or recommendations regarding the **Alternatives** as presented? *in Ottawa*

Yes No

With either alternative, the closer the landfill site comes to Hwy 138, expect more noise, odour complaints from users of both Hwy 138 & Hwy 417

6. Do you have any specific comments, concerns or recommendations regarding the **Evaluation Criteria** to be used in the assessment of the Alternatives as presented?

Yes No

With the expansion eastwards, it will affect the sod operations of Manderly Sod. It will only leave a small window of opportunity of site preparations for the next area by 2025.

7. Do you have any comments or questions regarding our **proposed consultation program?**

Yes No

Basically it follows the procedures followed earlier from 2014 - 2018. The time frame may be too short especially if there is a repeat of the 2 1/2 years gap before the 2015 Terms of Reference was approved.

8. Are there any other issues that you feel GFL should consider in the **development of the Terms of Reference?**

Yes No

In the socio-economic report, how many other landfills in eastern Ontario will be closing in the next 5 years and then from 2025 - 2045.

PUBLIC OPEN HOUSE #1
Thursday, January 30th, 2020
4 p.m. – 8 p.m.

Moose Creek Recreation Centre, 4 St Polycarp St, Moose Creek, ON

Name:

Address:

Phone #:

Email:

Thank you for taking the time to provide us with your comments.

Please remember to put your comments in the Comment Box before you leave.

Comments can be provided by mail or email at any time during the Environmental Assessment process.
If you do not have time to submit your comment sheet today, please email, mail or fax your comments by February 14, 2020 to:

Mr. Greg van Loenen, Environmental Compliance Officer
GFL Environmental Inc.
17125 Lafleche Road, Moose Creek, Ontario K0C 1W0
Telephone: 613-538-2776 ext. 223
Fax: 613-538-2779
Email: gvanloenen@gflenv.com

1. My **interest** in the project is: (please check all that apply)

- | | |
|---|--|
| <input type="checkbox"/> residential property | <input checked="" type="checkbox"/> air quality (dust, noise, odour) |
| <input type="checkbox"/> business | <input type="checkbox"/> ecology |
| <input type="checkbox"/> member of interest group | <input checked="" type="checkbox"/> groundwater, surface water |
| <input type="checkbox"/> agency representative | <input checked="" type="checkbox"/> land use / visual |
| <input type="checkbox"/> other:
_____ | <input type="checkbox"/> transportation |

2. Please provide any **general comments** about the information presented at this Public Open House.

nicey presented Well explained. lots of information on chart.

All personal information included in a submission – such as name, address, telephone number and property location – is collected, maintained and disclosed by the Ministry of the Environment, Conservation and Parks for the purposes of transparency and consultation. The information is collected under the authority of the *Environmental Assessment Act* or is collected and maintained for the purpose of creating a record that is available to the general public as described in s. 37 of the *Freedom of Information and Protection of Privacy Act*. Personal information you submit will become part of a public record that is available to the general public unless you request that your personal information remain confidential. For more information, please contact the Ministry of the Environment, Conservation and Parks' Freedom of Information and Privacy Coordinator at 416-327-1434.

3. Do you have any additional comments, concerns or recommendations regarding the **current operations at the EOWHF?**

Yes No

4. After reviewing the information presented at this Public Open House, do you have any additional comments, concerns, or recommendations regarding the **rationale for the proposed project?**

Yes No

5. Do you have any specific comments, concerns or recommendations regarding the **Alternatives** as presented?

Yes No

alternatives ¹ incinerators should be implemented. no need to upload landfill ~~read~~ -

6. Do you have any specific comments, concerns or recommendations regarding the **Evaluation Criteria** to be used in the assessment of the Alternatives as presented?

Yes No

7. Do you have any comments or questions regarding our **proposed consultation program?**

Yes No

8. Are there any other issues that you feel GFL should consider in the **development of the Terms of Reference?**

Yes No

too many to enumerate.

Thank you.

PUBLIC OPEN HOUSE #1
Thursday, January 30th, 2020
4 p.m. – 8 p.m.

Moose Creek Recreation Centre, 4 St Polycarp St, Moose Creek, ON

Name: _____
 Address: _____
 Phone #: _____
 Email: _____

Thank you for taking the time to provide us with your comments.
Please remember to put your comments in the Comment Box before you leave.

Comments can be provided by mail or email at any time during the Environmental Assessment process.
If you do not have time to submit your comment sheet today, please email, mail or fax your comments by February 14, 2020 to:

Mr. Greg van Loenen, Environmental Compliance Officer
 GFL Environmental Inc.
 17125 Lafleche Road, Moose Creek, Ontario K0C 1W0
 Telephone: 613-538-2776 ext. 223
 Fax: 613-538-2779
 Email: gvanloenen@gflenv.com

1. My interest in the project is: (please check all that apply)

- | | |
|--|--|
| <input checked="" type="checkbox"/> residential property | <input checked="" type="checkbox"/> air quality (dust, noise, <u>odour</u>) |
| <input type="checkbox"/> business | <input type="checkbox"/> ecology |
| <input type="checkbox"/> member of interest group | <input type="checkbox"/> groundwater, surface water |
| <input type="checkbox"/> agency representative | <input checked="" type="checkbox"/> land use / <u>visual</u> |
| <input type="checkbox"/> other: _____ | <input checked="" type="checkbox"/> transportation |

2. Please provide any general comments about the information presented at this Public Open House.

*It was well setup and I got my answers - Well done.
 I live South east of landfill site and concerned about odours. Seems
 that we'll will pick up to go to plant. Important to improve
 road traffic on 138. Possible wider ramps - May review
 if traffic light is needed*

All personal information included in a submission – such as name, address, telephone number and property location – is collected, maintained and disclosed by the Ministry of the Environment, Conservation and Parks for the purposes of transparency and consultation. The information is collected under the authority of the *Environmental Assessment Act* or is collected and maintained for the purpose of creating a record that is available to the general public as described in s. 37 of the *Freedom of Information and Protection of Privacy Act*. Personal information you submit will become part of a public record that is available to the general public unless you request that your personal information remain confidential. For more information, please contact the Ministry of the Environment, Conservation and Parks' Freedom of Information and Privacy Coordinator at 416-327-1434.

3. Do you have any additional comments, concerns or recommendations regarding the **current operations at the EOWHF?**

Yes No

4. After reviewing the information presented at this Public Open House, do you have any additional comments, concerns, or recommendations regarding the **rationale for the proposed project?**

Yes No

5. Do you have any specific comments, concerns or recommendations regarding the **Alternatives** as presented?

Yes No

6. Do you have any specific comments, concerns or recommendations regarding the **Evaluation Criteria** to be used in the assessment of the Alternatives as presented?

Yes No

7. Do you have any comments or questions regarding our **proposed consultation program?**

Yes No

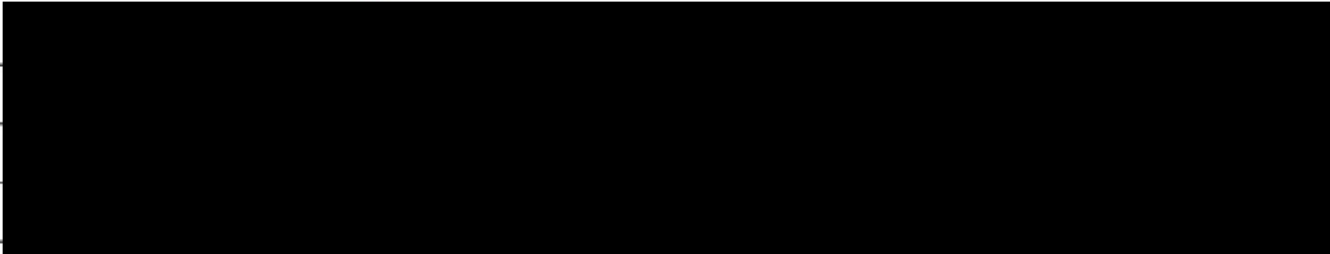
8. Are there any other issues that you feel GFL should consider in the **development of the Terms of Reference?**

Yes No

PUBLIC OPEN HOUSE #1
Thursday, January 30th, 2020
4 p.m. – 8 p.m.

Moose Creek Recreation Centre, 4 St Polycarp St, Moose Creek, ON

Name:
Address:
Phone #:
Email:



Thank you for taking the time to provide us with your comments.
Please remember to put your comments in the Comment Box before you leave.

Comments can be provided by mail or email at any time during the Environmental Assessment process.
If you do not have time to submit your comment sheet today, please email, mail or fax your comments by February 14, 2020 to:

Mr. Greg van Loenen, Environmental Compliance Officer
GFL Environmental Inc.
17125 Lafleche Road, Moose Creek, Ontario K0C 1W0
Telephone: 613-538-2776 ext. 223
Fax: 613-538-2779
Email: gvanloenen@gflenv.com

1. My interest in the project is: (please check all that apply)

- | | |
|---|---|
| <input type="checkbox"/> residential property | <input type="checkbox"/> air quality (dust, noise, odour) |
| <input type="checkbox"/> business | <input type="checkbox"/> ecology |
| <input type="checkbox"/> member of interest group | <input type="checkbox"/> groundwater, surface water |
| <input type="checkbox"/> agency representative | <input type="checkbox"/> land use / visual |
| <input type="checkbox"/> other: _____ | <input type="checkbox"/> transportation |

put up with the smehh

2. Please provide any **general comments** about the information presented at this Public Open House.

MODERNISATION → Incinerators. ↑
Invest in Pans & Russell (After Ahh we like before which the funding WAS USED to purchase land in Bog AND Forest & LA ROSE - (It's good for public image -

All personal information included in a submission – such as name, address, telephone number and property location – is collected, maintained and disclosed by the Ministry of the Environment, Conservation and Parks for the purposes of transparency and consultation. The information is collected under the authority of the *Environmental Assessment Act* or is collected and maintained for the purpose of creating a record that is available to the general public as described in s. 37 of the *Freedom of Information and Protection of Privacy Act*. Personal information you submit will become part of a public record that is available to the general public unless you request that your personal information remain confidential. For more information, please contact the Ministry of the Environment, Conservation and Parks' Freedom of Information and Privacy Coordinator at 416-327-1434.

3. Do you have any additional comments, concerns or recommendations regarding the **current operations at the EOWHF?**

Yes No

4. After reviewing the information presented at this Public Open House, do you have any additional comments, concerns, or recommendations regarding the **rationale for the proposed project?**

Yes No

5. Do you have any specific comments, concerns or recommendations regarding the **Alternatives** as presented?

Yes No

IN SITUATION

6. Do you have any specific comments, concerns or recommendations regarding the **Evaluation Criteria** to be used in the assessment of the Alternatives as presented?

Yes No

7. Do you have any comments or questions regarding our **proposed consultation program?**

Yes No

8. Are there any other issues that you feel GFL should consider in the **development of the Terms of Reference?**

Yes No

PUBLIC OPEN HOUSE #1
Thursday, January 30th, 2020
4 p.m. – 8 p.m.

Moose Creek Recreation Centre, 4 St Polycarp St, Moose Creek, ON

Name: _____
Address: _____
Phone #: _____
Email: _____

Thank you for taking the time to provide us with your comments.
Please remember to put your comments in the Comment Box before you leave.

Comments can be provided by mail or email at any time during the Environmental Assessment process.
If you do not have time to submit your comment sheet today, please email, mail or fax your comments by February 14, 2020 to:

Mr. Greg van Loenen, Environmental Compliance Officer
GFL Environmental Inc.
17125 Lafleche Road, Moose Creek, Ontario K0C 1W0
Telephone: 613-538-2776 ext. 223
Fax: 613-538-2779
Email: gvanloenen@gflenv.com

1. My interest in the project is: (please check all that apply)

- | | |
|--|--|
| <input type="checkbox"/> residential property | <input checked="" type="checkbox"/> air quality (dust, noise, odour) |
| <input type="checkbox"/> business | <input type="checkbox"/> ecology |
| <input type="checkbox"/> member of interest group | <input type="checkbox"/> groundwater, surface water |
| <input type="checkbox"/> agency representative | <input type="checkbox"/> land use / visual |
| <input checked="" type="checkbox"/> other:
<u>NEIGHBOURING MUNICIPALITY</u> | <input type="checkbox"/> transportation |

2. Please provide any general comments about the information presented at this Public Open House.

NO NEW TECHNOLOGY (INCINERATION)

AT MUNICIPALITY, WE GET A LOT OF COMPLAINTS ABOUT THE SMELLS, AFFECTING LIVING STANDARDS & PROPERTY VALUES

All personal information included in a submission – such as name, address, telephone number and property location – is collected, maintained and disclosed by the Ministry of the Environment, Conservation and Parks for the purposes of transparency and consultation. The information is collected under the authority of the *Environmental Assessment Act* or is collected and maintained for the purpose of creating a record that is available to the general public as described in s. 37 of the *Freedom of Information and Protection of Privacy Act*. Personal information you submit will become part of a public record that is available to the general public unless you request that your personal information remain confidential. For more information, please contact the Ministry of the Environment, Conservation and Parks' Freedom of Information and Privacy Coordinator at 416-327-1434.

3. Do you have any additional comments, concerns or recommendations regarding the **current operations at the EOWHF?**

Yes No

SAFELY

4. After reviewing the information presented at this Public Open House, do you have any additional comments, concerns, or recommendations regarding the **rationale for the proposed project?**

Yes No

SHOULD BE GOING TO NEWER TECHNOLOGIES
BURYING GARBAGE IS OLD SKEWOL.

5. Do you have any specific comments, concerns or recommendations regarding the **Alternatives** as presented?

Yes No

6. Do you have any specific comments, concerns or recommendations regarding the **Evaluation Criteria** to be used in the assessment of the Alternatives as presented?

Yes No

7. Do you have any comments or questions regarding our **proposed consultation program?**

Yes No

8. Are there any other issues that you feel GFL should consider in the **development of the Terms of Reference?**

Yes No



PUBLIC OPEN HOUSE #1
Thursday, January 30th, 2020
4 p.m. – 8 p.m.

Moose Creek Recreation Centre, 4 St Polycarp St, Moose Creek, ON

Name:

Address:

Phone #:

Email:

Thank you for taking the time to provide us with your comments.
Please remember to put your comments in the Comment Box before you leave.

Comments can be provided by mail or email at any time during the Environmental Assessment process.
If you do not have time to submit your comment sheet today, please email, mail or fax your comments by February 14, 2020 to:

Mr. Greg van Loenen, Environmental Compliance Officer
GFL Environmental Inc.
17125 Lafleche Road, Moose Creek, Ontario K0C 1W0
Telephone: 613-538-2776 ext. 223
Fax: 613-538-2779
Email: gvanloenen@gflenv.com

1. My interest in the project is: (please check all that apply)

- | | |
|--|---|
| <input checked="" type="checkbox"/> residential property | <input type="checkbox"/> air quality (dust, noise, odour) |
| <input type="checkbox"/> business | <input type="checkbox"/> ecology |
| <input type="checkbox"/> member of interest group | <input type="checkbox"/> groundwater, surface water |
| <input type="checkbox"/> agency representative | <input type="checkbox"/> land use / visual |
| <input type="checkbox"/> other: | <input type="checkbox"/> transportation |

2. Please provide any general comments about the information presented at this Public Open House.

*The information provided was well done and very informative.
My expectation is all materials listed, will
be available on-line.*

All personal information included in a submission – such as name, address, telephone number and property location – is collected, maintained and disclosed by the Ministry of the Environment, Conservation and Parks for the purposes of transparency and consultation. The information is collected under the authority of the *Environmental Assessment Act* or is collected and maintained for the purpose of creating a record that is available to the general public as described in s. 37 of the *Freedom of Information and Protection of Privacy Act*. Personal information you submit will become part of a public record that is available to the general public unless you request that your personal information remain confidential. For more information, please contact the Ministry of the Environment, Conservation and Parks' Freedom of Information and Privacy Coordinator at 416-327-1434.

3. Do you have any additional comments, concerns or recommendations regarding the **current operations at the EOWHF?**

Yes No

GFL would need to improve the reduction of odours that the site is producing.

4. After reviewing the information presented at this Public Open House, do you have any additional comments, concerns, or recommendations regarding the **rationale for the proposed project?**

Yes No

It is important that odour elimination be the priority in your operations.

This issue would need to be resolved before any future expansion.

5. Do you have any specific comments, concerns or recommendations regarding the **Alternatives** as presented?

Yes No

The alternative presented is acceptable in the location presented but it would be very important to maintain the aesthetics of the site because of its location. A tree line should be planted along the whole site so the traffic, visitors to the area would not be able to see the operations.

6. Do you have any specific comments, concerns or recommendations regarding the **Evaluation Criteria** to be used in the assessment of the Alternatives as presented?

Yes No

7. Do you have any comments or questions regarding our **proposed consultation program?**

Yes No

A committee should be created with the residents of Moose Creek including key members of volunteer groups such as the Chamber of Commerce, Optimist Club, Volunteer Fire Department and Moose Creek Recreation Association. By creating this consultation committee the host community would be involved.

8. Are there any other issues that you feel GFL should consider in the **development of the Terms of Reference?**

Yes No

GFL should include a plan to produce natural gas for heating in partnership with gas conservation providers and bring this utility to our area.

2) The information provided was well done and very informative. My expectation is all materials displayed, will be available on-line.

3) G.F.L. would need to improve the reduction of odours that the site is producing.

4) It is important that odour elimination be the priority in your operation.

This issue would need to be resolved before any future expansion.

5) the alternative presented is acceptable in the location presented but it would be very important to maintain the aesthetics of the site because of its location. A tree line should be planted along the whole site so the traffic, visitors to the area would not be able to see the operation.

6)No

7) A committee should be created with the residents of Moose Creek including key members of volunteer groups such as the Chamber of Commerce, Optimist Club, volunteer Fire Department and Moose Creek Recreation Association. By creating this consultation committee the host community would be involved.

8) G.F.L. should include a plan to produce Natural Gas for heating in partnership with gas consortium providers and bring this utility to our area.



PORTES OUVERTES #1
Jeudi le 30 janvier 2020
16h00 – 20h00

Moose Creek Recreation Centre, 4 St Polycarp St, Moose Creek, ON

Nom : Nicole Lanthier
 Adresse : 333 rue chapel, #505, @Hawa Ont Kin 898
 Téléphone : 613-234-7996
 Courriel : Nlanthier@netcape.net

Owner of property / Propriétaire 141 route 700 E, Candran Ont

Merci d'avoir pris le temps de nous faire part de vos commentaires.

N'oubliez pas de mettre vos commentaires dans la boîte de commentaires avant de partir.

Les commentaires peuvent être envoyés par la poste ou par courriel en tout temps pendant le processus d'évaluation environnementale.

Si vous n'avez pas le temps de soumettre votre fiche de commentaires aujourd'hui, veuillez envoyer vos commentaires par courriel, par la poste ou par télécopieur d'ici le 14 février 2020 à :

M. Greg van Loenen, Responsable de la conformité environnementale
 GFL Environmental Inc.
 17125 Lafleche Road, Moose Creek, Ontario K0C 1W0
 Téléphone : 613-538-2776 poste. 223
 Télécopieur : 613-538-2779
 Courriel : gvanloenen@gflenv.com

1. **Mon intérêt** pour le projet est le suivant: (veuillez sélectionner tout ce qui s'applique)

- | | |
|---|--|
| <input checked="" type="checkbox"/> propriété résidentielle | <input checked="" type="checkbox"/> qualité de l'air (poussière, bruit, <u>odeur</u>) |
| <input type="checkbox"/> entreprise | <input type="checkbox"/> écologie |
| <input type="checkbox"/> membre d'un groupe d'intérêt | <input type="checkbox"/> eaux souterraines, eaux de surface |
| <input type="checkbox"/> représentant d'agence | <input type="checkbox"/> utilisation des terres/ visuel |
| <input type="checkbox"/> autre: | <input checked="" type="checkbox"/> transport |

2. Veuillez nous mentionner vos commentaires généraux concernant l'information présentée aux portes ouvertes.

Grande lignes du projet seulement - De prime abord,
la présentation est bonne

Tous les renseignements personnels inclus dans une présentation – comme le nom, l'adresse, le numéro de téléphone et l'emplacement de la propriété – sont recueillis, conservés et communiqués par le ministère de l'Environnement, Conservation et Parcs à des fins de transparence et de consultation. Les renseignements sont recueillis en vertu de la Loi sur l'évaluation environnementale ou sont recueillis et conservés aux fins de la création d'un document accessible au grand public, conformément à l'art. 37 de la Loi sur l'accès à l'information et Loi sur la protection de la vie privée. Les renseignements personnels que vous soumettez seront versés dans un dossier public qui est accessible au grand public, à moins que vous ne demandiez que vos renseignements personnels demeurent confidentiels. Pour de plus amples renseignements, veuillez communiquer avec le coordonnateur de l'accès à l'information et de la protection des renseignements personnels du ministère de l'Environnement, de la Conservation et des Parcs au 416-327-1434.

3. Avez-vous d'autres commentaires, préoccupations ou recommandations au sujet des opérations en cours à l'EOWHF?

Oui Non

malgré les promesses les réductions n'ont pas eu lieu. C'est parfois intolérable surtout l'été, ce qui nous force à garder les fenêtres de la maison fermées et d'utiliser l'air climatisé. Le projet ne démontre pas une diminution

4. Après avoir examiné l'information présentée aux portes ouvertes, avez-vous d'autres commentaires, préoccupations ou recommandations concernant la justification du projet proposé? *des odeurs nauséabondes*

Oui Non

5. Avez-vous des commentaires, des préoccupations ou des recommandations spécifiques concernant les solutions de rechange présentées?

Oui Non

~~trop tôt~~ mais j'anticipe des questions concernant l'usage de la route 100 - ??

6. Avez-vous des commentaires, des préoccupations ou des recommandations spécifiques concernant les critères d'évaluation qui seront utilisés dans l'évaluation des solutions de rechange telles que présentées?

Oui Non

la zone hors site devrait être plus grande à cause des odeurs. + 1 km minimum

7. Avez-vous des commentaires ou des questions concernant notre programme de consultation proposé?

Oui Non

8. À votre avis, y a-t-il d'autres questions que GFL devrait prendre en considération dans l'élaboration du mandat?

Oui Non

~~la route 100~~

PORTES OUVERTES #1
Jeudi le 30 janvier 2020
16h00 – 20h00

Moose Creek Recreation Centre, 4 St Polycarp St, Moose Creek, ON

Nom : Michel Gérin
Adresse : 33 Fillion, Casselman, ON, K0A 1M0
Téléphone : 613-764-3643
Courriel : mgerin4@gmail.com

Merci d'avoir pris le temps de nous faire part de vos commentaires.
N'oubliez pas de mettre vos commentaires dans la boîte de commentaires avant de partir.

Les commentaires peuvent être envoyés par la poste ou par courriel en tout temps pendant le processus d'évaluation environnementale.

Si vous n'avez pas le temps de soumettre votre fiche de commentaires aujourd'hui, veuillez envoyer vos commentaires par courriel, par la poste ou par télécopieur d'ici le 14 février 2020 à :

M. Greg van Loenen, Responsable de la conformité environnementale
GFL Environmental Inc.
17125 Lafleche Road, Moose Creek, Ontario K0C 1W0
Téléphone : 613-538-2776 poste. 223
Télécopieur : 613-538-2779
Courriel : gvanloenen@gflenv.com

1. **Mon intérêt pour le projet est le suivant: (veuillez sélectionner tout ce qui s'applique)**

- | | |
|---|--|
| <input checked="" type="checkbox"/> propriété résidentielle | <input checked="" type="checkbox"/> qualité de l'air (poussière, bruit, odeur) |
| <input type="checkbox"/> entreprise | <input type="checkbox"/> écologie |
| <input type="checkbox"/> membre d'un groupe d'intérêt | <input type="checkbox"/> eaux souterraines, eaux de surface |
| <input type="checkbox"/> représentant d'agence | <input type="checkbox"/> utilisation des terres/ visuel |
| <input type="checkbox"/> autre: _____ | <input type="checkbox"/> transport |

2. **Veuillez nous mentionner vos commentaires généraux concernant l'information présentée aux portes ouvertes.**

Du point de vue d'un résident de la région et d'un
quelqu'un qui circule sur la 417, le principal problème
actuel est l'odeur. J'étais surpris qu'il y ait très peu
mention de cela dans la présentation sur panneaux.

Tous les renseignements personnels inclus dans une présentation – comme le nom, l'adresse, le numéro de téléphone et l'emplacement de la propriété – sont recueillis, conservés et communiqués par le ministère de l'Environnement, Conservation et Parcs à des fins de transparence et de consultation. Les renseignements sont recueillis en vertu de la Loi sur l'évaluation environnementale ou sont recueillis et conservés aux fins de la création d'un document accessible au grand public, conformément à l'art. 37 de la Loi sur l'accès à l'information et Loi sur la protection de la vie privée. Les renseignements personnels que vous soumettez seront versés dans un dossier public qui est accessible au grand public, à moins que vous ne demandiez que vos renseignements personnels demeurent confidentiels. Pour de plus amples renseignements, veuillez communiquer avec le coordonnateur de l'accès à l'information et de la protection des renseignements personnels du ministère de l'Environnement, de la Conservation et des Parcs au 416-327-1434.

3. Avez-vous d'autres commentaires, préoccupations ou recommandations au sujet **des opérations en cours à l'EOWHF?**

Oui Non

4. Après avoir examiné l'information présentée aux portes ouvertes, avez-vous d'autres commentaires, préoccupations ou recommandations concernant la **justification du projet proposé?**

Oui Non

5. Avez-vous des commentaires, des préoccupations ou des recommandations spécifiques concernant les **solutions de rechange** présentées?

Oui Non

6. Avez-vous des commentaires, des préoccupations ou des recommandations spécifiques concernant les **critères d'évaluation** qui seront utilisés dans l'évaluation des solutions de rechange telles que présentées?

Oui Non

La compagnie est citée dans le Droit qu'elle met en place des systèmes pour réduire l'odeur. Ce système Un critère d'évaluation devrait être que ce système soit fonctionnel et qu'il est clair que l'odeur a diminué AVANT que toute

7. Avez-vous des commentaires ou des questions concernant notre **programme de consultation proposé?**

Oui Non

autorisation
sont données.

8. À votre avis, y a-t-il d'autres questions que GFL devrait prendre en considération dans l'élaboration du mandat?

Oui Non

PORTES OUVERTES #1
Jeudi le 30 janvier 2020
16h00 – 20h00

Moose Creek Recreation Centre, 4 St Polycarp St, Moose Creek, ON

Nom : Daniel Lefleur
Adresse : 848 Principale Casselman On. K0A 1W0
Téléphone : 613-979-1402
Courriel : maisonleflourhome@bellnet.ca

Merci d'avoir pris le temps de nous faire part de vos commentaires.
N'oubliez pas de mettre vos commentaires dans la boîte de commentaires avant de partir.

Les commentaires peuvent être envoyés par la poste ou par courriel en tout temps pendant le processus d'évaluation environnementale.

Si vous n'avez pas le temps de soumettre votre fiche de commentaires aujourd'hui, veuillez envoyer vos commentaires par courriel, par la poste ou par télécopieur d'ici le 14 février 2020 à :

M. Greg van Loenen, Responsable de la conformité environnementale
GFL Environmental Inc.
17125 Lafleche Road, Moose Creek, Ontario K0C 1W0
Téléphone : 613-538-2776 poste. 223
Télécopieur : 613-538-2779
Courriel : gvanloenen@gflenv.com

1. **Mon intérêt pour le projet est le suivant: (veuillez sélectionner tout ce qui s'applique)**

- | | | | |
|-------------------------------------|------------------------------|--------------------------|--|
| <input checked="" type="checkbox"/> | propriété résidentielle | <input type="checkbox"/> | qualité de l'air (poussière, bruit, odeur) |
| <input checked="" type="checkbox"/> | entreprise | <input type="checkbox"/> | écologie |
| <input type="checkbox"/> | membre d'un groupe d'intérêt | <input type="checkbox"/> | eaux souterraines, eaux de surface |
| <input type="checkbox"/> | représentant d'agence | <input type="checkbox"/> | utilisation des terres/ visuel |
| <input type="checkbox"/> | autre: | <input type="checkbox"/> | transport |

2. **Veuillez nous mentionner vos commentaires généraux concernant l'information présentée aux portes ouvertes.**

A Casselman la qualité de l'air est pauvre, les odeurs
SVP aide l'odeur

Tous les renseignements personnels inclus dans une présentation – comme le nom, l'adresse, le numéro de téléphone et l'emplacement de la propriété – sont recueillis, conservés et communiqués par le ministère de l'Environnement, Conservation et Parcs à des fins de transparence et de consultation. Les renseignements sont recueillis en vertu de la Loi sur l'évaluation environnementale ou sont recueillis et conservés aux fins de la création d'un document accessible au grand public, conformément à l'art. 37 de la Loi sur l'accès à l'information et Loi sur la protection de la vie privée. Les renseignements personnels que vous soumettez seront versés dans un dossier public qui est accessible au grand public, à moins que vous ne demandiez que vos renseignements personnels demeurent confidentiels. Pour de plus amples renseignements, veuillez communiquer avec le coordonnateur de l'accès à l'information et de la protection des renseignements personnels du ministère de l'Environnement, de la Conservation et des Parcs au 416-327-1434.

3. Avez-vous d'autres commentaires, préoccupations ou recommandations au sujet **des opérations en cours à l'EOWHF?**

Oui Non

SUP Appelle moi merci!

4. Après avoir examiné l'information présentée aux portes ouvertes, avez-vous d'autres commentaires, préoccupations ou recommandations concernant la **justification du projet proposé?**

Oui Non

5. Avez-vous des commentaires, des préoccupations ou des recommandations spécifiques concernant les **solutions de rechange** présentées?

Oui Non

6. Avez-vous des commentaires, des préoccupations ou des recommandations spécifiques concernant les **critères d'évaluation** qui seront utilisés dans l'évaluation des solutions de rechange telles que présentées?

Oui Non

7. Avez-vous des commentaires ou des questions concernant notre **programme de consultation proposé?**

Oui Non

8. À votre avis, y a-t-il d'autres questions que GFL devrait prendre en considération dans l'élaboration du mandat?

Oui Non

PORTES OUVERTES #1
Jeudi le 30 janvier 2020
16h00 – 20h00

Moose Creek Recreation Centre, 4 St Polycarp St, Moose Creek, ON

Nom : Bernard Boulerice
 Adresse : 682 rue St-Isidore Casselman
 Téléphone : 613-764-5698 ou 569 0303
 Courriel : bboulerice@casselman.ca

Merci d'avoir pris le temps de nous faire part de vos commentaires.
N'oubliez pas de mettre vos commentaires dans la boîte de commentaires avant de partir.

Les commentaires peuvent être envoyés par la poste ou par courriel en tout temps pendant le processus d'évaluation environnementale.

Si vous n'avez pas le temps de soumettre votre fiche de commentaires aujourd'hui, veuillez envoyer vos commentaires par courriel, par la poste ou par télécopieur d'ici le 14 février 2020 à :

M. Greg van Loenen, Responsable de la conformité environnementale
 GFL Environmental Inc.
 17125 Lafleche Road, Moose Creek, Ontario K0C 1W0
 Téléphone : 613-538-2776 poste. 223
 Télécopieur : 613-538-2779
 Courriel : gvanloenen@gflenv.com

1. **Mon intérêt pour le projet est le suivant:** (veuillez sélectionner tout ce qui s'applique)

- | | |
|---|--|
| <input checked="" type="checkbox"/> propriété résidentielle | <input checked="" type="checkbox"/> qualité de l'air (poussière, bruit, odeur) |
| <input type="checkbox"/> entreprise | <input type="checkbox"/> écologie |
| <input type="checkbox"/> membre d'un groupe d'intérêt | <input checked="" type="checkbox"/> eaux souterraines, eaux de surface |
| <input type="checkbox"/> représentant d'agence | <input type="checkbox"/> utilisation des terres/ visuel |
| <input type="checkbox"/> autre: | <input type="checkbox"/> transport |

2. Veuillez nous mentionner vos commentaires généraux concernant l'information présentée aux portes ouvertes.

Le projet me semble valable et bien mesuré.

Tous les renseignements personnels inclus dans une présentation – comme le nom, l'adresse, le numéro de téléphone et l'emplacement de la propriété – sont recueillis, conservés et communiqués par le ministère de l'Environnement, Conservation et Parcs à des fins de transparence et de consultation. Les renseignements sont recueillis en vertu de la Loi sur l'évaluation environnementale ou sont recueillis et conservés aux fins de la création d'un document accessible au grand public, conformément à l'art. 37 de la Loi sur l'accès à l'information et Loi sur la protection de la vie privée. Les renseignements personnels que vous soumettez seront versés dans un dossier public qui est accessible au grand public, à moins que vous ne demandiez que vos renseignements personnels demeurent confidentiels. Pour de plus amples renseignements, veuillez communiquer avec le coordonnateur de l'accès à l'information et de la protection des renseignements personnels du ministère de l'Environnement, de la Conservation et des Parcs au 416-327-1434.

3. Avez-vous d'autres commentaires, préoccupations ou recommandations au sujet **des opérations en cours à l'EOWHF?**

Oui Non

4. Après avoir examiné l'information présentée aux portes ouvertes, avez-vous d'autres commentaires, préoccupations ou recommandations concernant la **justification du projet proposé?**

Oui Non

5. Avez-vous des commentaires, des préoccupations ou des recommandations spécifiques concernant les **solutions de rechange** présentées?

Oui Non

La qualité de l'air (seule) me préoccupe quelque peu.

6. Avez-vous des commentaires, des préoccupations ou des recommandations spécifiques concernant les **critères d'évaluation** qui seront utilisés dans l'évaluation des solutions de rechange telles que présentées?

Oui Non

7. Avez-vous des commentaires ou des questions concernant notre **programme de consultation proposé?**

Oui Non

8. À votre avis, y a-t-il d'autres questions que GFL devrait prendre en considération dans l'élaboration du mandat?

Oui Non
