



Appendix F. Indigenous Engagement and Communications



January 15, 2020

Grand Chief Abram Benedict
Mohawk Council of Akwesasne
Office of the Grand Chief
PO Box 90
Akwesasne, QC H0M 1A0

Dear Grand Chief Abram Benedict,

Subject: GFL Environmental Inc. Notice of Commencement and Public Open House Terms of Reference for an Environmental Assessment – Future Development of the Eastern Ontario Waste Handling Facility

On behalf of GFL Environmental Inc., I would like to inform you that we are commencing an Environmental Assessment (EA) seeking approval for the future development of our existing Eastern Ontario Waste Handling Facility (EOWHF) in Moose Creek, Ontario. GFL has determined that there is a sustainable business opportunity and need for the EOWHF to continue to provide landfill disposal capacity over the long term.

The EOWHF is located within the Township of North Stormont, approximately 5 kilometres north-northwest of the village of Moose Creek, Ontario, and 5 kilometres east of the village of Casselman, Ontario. The proposed future development will be on land currently owned or to be owned by GFL, and may include an area of the existing EOWHF if necessary. The location of the existing EOWHF and the proposed future development are shown in the attached Notice.

A copy of the Notice of Commencement and Public Open House for the Terms of Reference, which is the initial step in the EA process, is attached. The purpose of the EA is to assess the potential effects of the proposed future development on the environment. The EA will be carried out in accordance with the requirements of the *Environmental Assessment Act* (EAA).

We invite you to attend a **Public Open House** to introduce the project, and discuss the development and contents of the ToR, the EA process and the consultation process that will be followed during the development of the EA. The **Public Open House** is scheduled for **Thursday January 30th, 2020** at the **Moose Creek Recreation Centre, 4 St Polycarp St, Moose Creek, Ontario** from **4 p.m. to 8 p.m.** We hope that your schedule will permit you to attend.

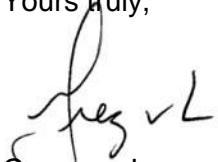
You are encouraged to participate in helping us identify issues, interests or ideas to be addressed throughout the EA. We will continue to keep you updated on our EA and request your input through consultation events, the project website www.gflenv.com/moose-creek-eowhf and by mail, email or fax.



Members of the public, agencies, Indigenous communities and other interested persons are encouraged to continue to actively participate in the planning process by attending consultation opportunities or contacting staff directly with comments or questions.

If you have any questions regarding our project or the ToR, please do not hesitate to contact me at anytime.

Yours truly,

A handwritten signature in black ink, appearing to read "Greg v L".

Greg van Loenen
Environmental Compliance Officer
Telephone: (613) 538-2776 ext. 223
Email: gvanloenen@gflenv.com

Attachment: Notice of Commencement and Public Open House Terms of Reference for an Environmental Assessment – Future Development of the Eastern Ontario Waste Handling Facility



January 15, 2020

Kylee Tarbell
Director, Environment (Acting)
Mohawk Council of Akwesasne
101 Teweseheni Rd., CIA III
Akwesasne, ON K6H 5R7

Dear Kylee Tarbell,

Subject: GFL Environmental Inc. Notice of Commencement and Public Open House Terms of Reference for an Environmental Assessment – Future Development of the Eastern Ontario Waste Handling Facility

On behalf of GFL Environmental Inc., I would like to inform you that we are commencing an Environmental Assessment (EA) seeking approval for the future development of our existing Eastern Ontario Waste Handling Facility (EOWHF) in Moose Creek, Ontario. GFL has determined that there is a sustainable business opportunity and need for the EOWHF to continue to provide landfill disposal capacity over the long term.

The EOWHF is located within the Township of North Stormont, approximately 5 kilometres north-northwest of the village of Moose Creek, Ontario, and 5 kilometres east of the village of Casselman, Ontario. The proposed future development will be on land currently owned or to be owned by GFL, and may include an area of the existing EOWHF if necessary. The location of the existing EOWHF and the proposed future development are shown in the attached Notice.

A copy of the Notice of Commencement and Public Open House for the Terms of Reference, which is the initial step in the EA process, is attached. The purpose of the EA is to assess the potential effects of the proposed future development on the environment. The EA will be carried out in accordance with the requirements of the *Environmental Assessment Act* (EAA).

We invite you to attend a **Public Open House** to introduce the project, and discuss the development and contents of the ToR, the EA process and the consultation process that will be followed during the development of the EA. The **Public Open House** is scheduled for **Thursday January 30th, 2020** at the **Moose Creek Recreation Centre, 4 St Polycarp St, Moose Creek, Ontario** from **4 p.m. to 8 p.m.** We hope that your schedule will permit you to attend.

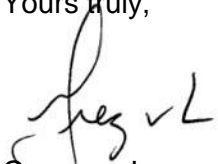
You are encouraged to participate in helping us identify issues, interests or ideas to be addressed throughout the EA. We will continue to keep you updated on our EA and request your input through consultation events, the project website www.gflenv.com/moose-creek-eowhf and by mail, email or fax.



Members of the public, agencies, Indigenous communities and other interested persons are encouraged to continue to actively participate in the planning process by attending consultation opportunities or contacting staff directly with comments or questions.

If you have any questions regarding our project or the ToR, please do not hesitate to contact me at anytime.

Yours truly,

A handwritten signature in black ink, appearing to read "Greg vL".

Greg van Loenen
Environmental Compliance Officer
Telephone: (613) 538-2776 ext. 223
Email: gvanloenen@gflenv.com

Attachment: Notice of Commencement and Public Open House Terms of Reference for an Environmental Assessment – Future Development of the Eastern Ontario Waste Handling Facility



January 15, 2020

Peggy Pyke-Thompson
Program Manager, Environment Program
Mohawk Council of Akwesasne
101 Teweseheni Rd., CIA III
Akwesasne, ON K6H 5R7

Dear Peggy Pyke-Thompson,

Subject: GFL Environmental Inc. Notice of Commencement and Public Open House Terms of Reference for an Environmental Assessment – Future Development of the Eastern Ontario Waste Handling Facility

On behalf of GFL Environmental Inc., I would like to inform you that we are commencing an Environmental Assessment (EA) seeking approval for the future development of our existing Eastern Ontario Waste Handling Facility (EOWHF) in Moose Creek, Ontario. GFL has determined that there is a sustainable business opportunity and need for the EOWHF to continue to provide landfill disposal capacity over the long term.

The EOWHF is located within the Township of North Stormont, approximately 5 kilometres north-northwest of the village of Moose Creek, Ontario, and 5 kilometres east of the village of Casselman, Ontario. The proposed future development will be on land currently owned or to be owned by GFL, and may include an area of the existing EOWHF if necessary. The location of the existing EOWHF and the proposed future development are shown in the attached Notice.

A copy of the Notice of Commencement and Public Open House for the Terms of Reference, which is the initial step in the EA process, is attached. The purpose of the EA is to assess the potential effects of the proposed future development on the environment. The EA will be carried out in accordance with the requirements of the *Environmental Assessment Act* (EAA).

We invite you to attend a **Public Open House** to introduce the project, and discuss the development and contents of the ToR, the EA process and the consultation process that will be followed during the development of the EA. The **Public Open House** is scheduled for **Thursday January 30th, 2020** at the **Moose Creek Recreation Centre, 4 St Polycarp St, Moose Creek, Ontario** from **4 p.m. to 8 p.m.** We hope that your schedule will permit you to attend.

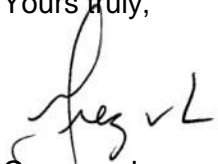
You are encouraged to participate in helping us identify issues, interests or ideas to be addressed throughout the EA. We will continue to keep you updated on our EA and request your input through consultation events, the project website www.gflenv.com/moose-creek-eowhf and by mail, email or fax.



Members of the public, agencies, Indigenous communities and other interested persons are encouraged to continue to actively participate in the planning process by attending consultation opportunities or contacting staff directly with comments or questions.

If you have any questions regarding our project or the ToR, please do not hesitate to contact me at anytime.

Yours truly,

A handwritten signature in black ink, appearing to read "Greg vL", is positioned above the typed name.

Greg van Loenen
Environmental Compliance Officer
Telephone: (613) 538-2776 ext. 223
Email: gvanloenen@gflenv.com

Attachment: Notice of Commencement and Public Open House Terms of Reference for an Environmental Assessment – Future Development of the Eastern Ontario Waste Handling Facility



January 15, 2020

Janet Stavinga
Executive Director
Algonquins of Ontario Consultation Office
31 Riverside Drive, Suite 101
Pembroke, ON K8A 8R6

Dear Janet Stavinga,

Subject: GFL Environmental Inc. Notice of Commencement and Public Open House Terms of Reference for an Environmental Assessment – Future Development of the Eastern Ontario Waste Handling Facility

On behalf of GFL Environmental Inc., I would like to inform you that we are commencing an Environmental Assessment (EA) seeking approval for the future development of our existing Eastern Ontario Waste Handling Facility (EOWHF) in Moose Creek, Ontario. GFL has determined that there is a sustainable business opportunity and need for the EOWHF to continue to provide landfill disposal capacity over the long term.

The EOWHF is located within the Township of North Stormont, approximately 5 kilometres north-northwest of the village of Moose Creek, Ontario, and 5 kilometres east of the village of Casselman, Ontario. The proposed future development will be on land currently owned or to be owned by GFL, and may include an area of the existing EOWHF if necessary. The location of the existing EOWHF and the proposed future development are shown in the attached Notice.

A copy of the Notice of Commencement and Public Open House for the Terms of Reference, which is the initial step in the EA process, is attached. The purpose of the EA is to assess the potential effects of the proposed future development on the environment. The EA will be carried out in accordance with the requirements of the *Environmental Assessment Act* (EAA).

We invite you to attend a **Public Open House** to introduce the project, and discuss the development and contents of the ToR, the EA process and the consultation process that will be followed during the development of the EA. The **Public Open House** is scheduled for **Thursday January 30th, 2020** at the **Moose Creek Recreation Centre, 4 St Polycarp St, Moose Creek, Ontario** from **4 p.m. to 8 p.m.** We hope that your schedule will permit you to attend.

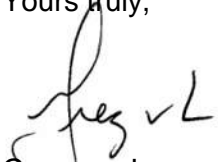
You are encouraged to participate in helping us identify issues, interests or ideas to be addressed throughout the EA. We will continue to keep you updated on our EA and request your input through consultation events, the project website www.gflenv.com/moose-creek-eowhf and by mail, email or fax.



Members of the public, agencies, Indigenous communities and other interested persons are encouraged to continue to actively participate in the planning process by attending consultation opportunities or contacting staff directly with comments or questions.

If you have any questions regarding our project or the ToR, please do not hesitate to contact me at anytime.

Yours truly,

A handwritten signature in black ink, appearing to read 'Greg v L', is positioned above the typed name.

Greg van Loenen
Environmental Compliance Officer
Telephone: (613) 538-2776 ext. 223
Email: gvanloenen@gflenv.com

Attachment: Notice of Commencement and Public Open House Terms of Reference for an Environmental Assessment – Future Development of the Eastern Ontario Waste Handling Facility



January 15, 2020

Grand Chief Konrad Sioui
Huron Wendat Nation Council
255, Place Chef Michel Laveau
Wendake, QC G0A 4V0

Dear Grand Chief Konrad Sioui,

Subject: GFL Environmental Inc. Notice of Commencement and Public Open House Terms of Reference for an Environmental Assessment – Future Development of the Eastern Ontario Waste Handling Facility

On behalf of GFL Environmental Inc., I would like to inform you that we are commencing an Environmental Assessment (EA) seeking approval for the future development of our existing Eastern Ontario Waste Handling Facility (EOWHF) in Moose Creek, Ontario. GFL has determined that there is a sustainable business opportunity and need for the EOWHF to continue to provide landfill disposal capacity over the long term.

The EOWHF is located within the Township of North Stormont, approximately 5 kilometres north-northwest of the village of Moose Creek, Ontario, and 5 kilometres east of the village of Casselman, Ontario. The proposed future development will be on land currently owned or to be owned by GFL, and may include an area of the existing EOWHF if necessary. The location of the existing EOWHF and the proposed future development are shown in the attached Notice.

A copy of the Notice of Commencement and Public Open House for the Terms of Reference, which is the initial step in the EA process, is attached. The purpose of the EA is to assess the potential effects of the proposed future development on the environment. The EA will be carried out in accordance with the requirements of the *Environmental Assessment Act* (EAA).

We invite you to attend a **Public Open House** to introduce the project, and discuss the development and contents of the ToR, the EA process and the consultation process that will be followed during the development of the EA. The **Public Open House** is scheduled for **Thursday January 30th, 2020** at the **Moose Creek Recreation Centre, 4 St Polycarp St, Moose Creek, Ontario** from **4 p.m. to 8 p.m.** We hope that your schedule will permit you to attend.

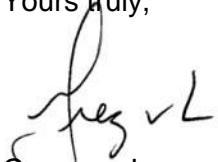
You are encouraged to participate in helping us identify issues, interests or ideas to be addressed throughout the EA. We will continue to keep you updated on our EA and request your input through consultation events, the project website www.gflenv.com/moose-creek-eowhf and by mail, email or fax.



Members of the public, agencies, Indigenous communities and other interested persons are encouraged to continue to actively participate in the planning process by attending consultation opportunities or contacting staff directly with comments or questions.

If you have any questions regarding our project or the ToR, please do not hesitate to contact me at anytime.

Yours truly,

A handwritten signature in black ink, appearing to read "Greg vL", written over a faint circular stamp.

Greg van Loenen
Environmental Compliance Officer
Telephone: (613) 538-2776 ext. 223
Email: gvanloenen@gflenv.com

Attachment: Notice of Commencement and Public Open House Terms of Reference for an Environmental Assessment – Future Development of the Eastern Ontario Waste Handling Facility



15 janvier 2020

Grand Chief Konrad Sioui
Huron Wendat Nation Council
255, Place Chef Michel Laveau
Wendake, QC G0A 4V0

Cher Grand Chief Konrad Sioui,

**Objet : GFL Environmental Inc. Avis de commencement et portes ouvertes
Cadre de référence pour une évaluation environnementale – Futur
développement de l'installation de manutention des déchets de l'Est de l'Ontario**

Au nom de GFL Environmental Inc., j'aimerais vous informer que nous entreprenons une évaluation environnementale (EE) en vue de l'approbation de l'aménagement futur de notre installation de traitement des déchets de l'Est de l'Ontario (EOWHF) à Moose Creek, en Ontario. GFL a déterminé qu'il y a une occasion d'affaires durable et que le EOWHF doit continuer à fournir une capacité d'élimination des sites d'enfouissement à long terme.

L'EOWHF est situé dans le canton de North Stormont, à environ 5 kilomètres au nord-nord-ouest du village de Moose Creek, en Ontario, et à 5 kilomètres à l'est du village de Casselman, en Ontario. Le futur développement proposé portera sur des terres qui appartiennent actuellement ou qui seront détenues par GFL, et pourrait inclure une zone de l'EOWHF existant si nécessaire. L'emplacement de l'EOWHF actuel et du projet de futur développement sont indiqués dans l'avis ci-joint.

Vous trouverez ci-joint une copie de l'avis de lancement et la journée portes ouvertes du mandat, qui constitue l'étape initiale du processus d'EE. L'EE a pour objet d'évaluer les effets potentiels du futur développement proposé sur l'environnement. L'EE sera effectuée conformément aux exigences de la Loi sur l'évaluation environnementale (LEE).

Nous vous invitons à assister à une **journée portes ouvertes** afin de vous présenter le projet et discuter de l'élaboration et du contenu du mandat, du processus d'EE et du processus de consultation qui sera suivi pendant l'élaboration de l'EE. La **journée portes ouvertes** est prévue pour le **jeudi 30 janvier 2020 au Moose Creek Recreation Centre, 4 St Polycarp St, Moose Creek, Ontario de 16 h à 20 h**. Nous espérons que votre horaire vous permettra d'y assister.

Nous vous encourageons à participer à la détermination des enjeux, des intérêts ou des idées à aborder tout au long de l'EE. Nous continuerons de vous tenir au courant de notre évaluation environnementale et de vous demander votre avis au moyen d'activités de consultation, sur le site Web du projet www.gflenv.com/moose-creek-eowhf et par la poste, par courriel ou par télécopieur.



Membres du public, les organismes, les collectivités autochtones et les autres personnes intéressées sont encouragés à continuer de participer activement au processus de planification en assistant aux consultations ou en communiquant directement avec le personnel pour lui faire part de leurs commentaires ou de leurs questions.

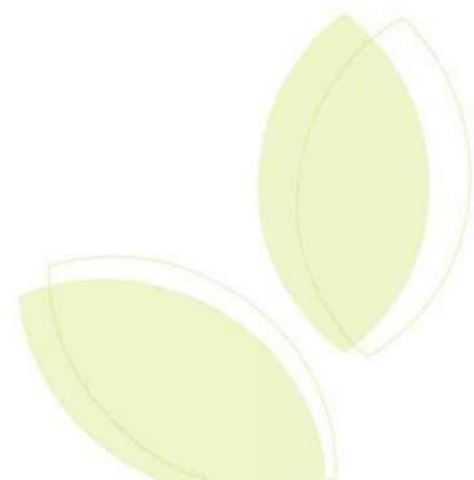
Si vous avez des questions concernant notre projet ou le mandat, n'hésitez pas à communiquer avec moi en tout temps.

Je vous en prie,



Greg van Loenen
Agent de conformité environnementale
Téléphone : (613) 538-2776 ext. 223
Courriel : gvanloenen@gflenv.com

Pièce jointe : Avis de commencement et portes ouvertes sur le mandat d'une évaluation environnementale – futur développement de l'installation de manutention des déchets de l'est de l'Ontario





January 15, 2020

Métis Consultation Unit
Métis Nation of Ontario
66 Slater Street, Suite 1100
Ottawa, ON K1P 5H1

Dear Métis Consultation Unit,

Subject: GFL Environmental Inc. Notice of Commencement and Public Open House Terms of Reference for an Environmental Assessment – Future Development of the Eastern Ontario Waste Handling Facility

On behalf of GFL Environmental Inc., I would like to inform you that we are commencing an Environmental Assessment (EA) seeking approval for the future development of our existing Eastern Ontario Waste Handling Facility (EOWHF) in Moose Creek, Ontario. GFL has determined that there is a sustainable business opportunity and need for the EOWHF to continue to provide landfill disposal capacity over the long term.

The EOWHF is located within the Township of North Stormont, approximately 5 kilometres north-northwest of the village of Moose Creek, Ontario, and 5 kilometres east of the village of Casselman, Ontario. The proposed future development will be on land currently owned or to be owned by GFL, and may include an area of the existing EOWHF if necessary. The location of the existing EOWHF and the proposed future development are shown in the attached Notice.

A copy of the Notice of Commencement and Public Open House for the Terms of Reference, which is the initial step in the EA process, is attached. The purpose of the EA is to assess the potential effects of the proposed future development on the environment. The EA will be carried out in accordance with the requirements of the *Environmental Assessment Act* (EAA).

We invite you to attend a **Public Open House** to introduce the project, and discuss the development and contents of the ToR, the EA process and the consultation process that will be followed during the development of the EA. The **Public Open House** is scheduled for **Thursday January 30th, 2020** at the **Moose Creek Recreation Centre, 4 St Polycarp St, Moose Creek, Ontario** from **4 p.m. to 8 p.m.** We hope that your schedule will permit you to attend.

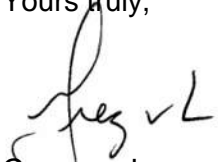
You are encouraged to participate in helping us identify issues, interests or ideas to be addressed throughout the EA. We will continue to keep you updated on our EA and request your input through consultation events, the project website www.gflenv.com/moose-creek-eowhf and by mail, email or fax.



Members of the public, agencies, Indigenous communities and other interested persons are encouraged to continue to actively participate in the planning process by attending consultation opportunities or contacting staff directly with comments or questions.

If you have any questions regarding our project or the ToR, please do not hesitate to contact me at anytime.

Yours truly,

A handwritten signature in black ink, appearing to read "Greg v L".

Greg van Loenen
Environmental Compliance Officer
Telephone: (613) 538-2776 ext. 223
Email: gvanloenen@gflenv.com

Attachment: Notice of Commencement and Public Open House Terms of Reference for an Environmental Assessment – Future Development of the Eastern Ontario Waste Handling Facility



January 15, 2020

Chief R. Donald Maracle
Mohawks of the Bay of Quinte - Tyendinaga Mohawk Council
24 Meadow Drive
Tyendinaga Mohawk Territory, ON K0K 1X0

Dear Chief R. Donald Maracle,

Subject: GFL Environmental Inc. Notice of Commencement and Public Open House Terms of Reference for an Environmental Assessment – Future Development of the Eastern Ontario Waste Handling Facility

On behalf of GFL Environmental Inc., I would like to inform you that we are commencing an Environmental Assessment (EA) seeking approval for the future development of our existing Eastern Ontario Waste Handling Facility (EOWHF) in Moose Creek, Ontario. GFL has determined that there is a sustainable business opportunity and need for the EOWHF to continue to provide landfill disposal capacity over the long term.

The EOWHF is located within the Township of North Stormont, approximately 5 kilometres north-northwest of the village of Moose Creek, Ontario, and 5 kilometres east of the village of Casselman, Ontario. The proposed future development will be on land currently owned or to be owned by GFL, and may include an area of the existing EOWHF if necessary. The location of the existing EOWHF and the proposed future development are shown in the attached Notice.

A copy of the Notice of Commencement and Public Open House for the Terms of Reference, which is the initial step in the EA process, is attached. The purpose of the EA is to assess the potential effects of the proposed future development on the environment. The EA will be carried out in accordance with the requirements of the *Environmental Assessment Act* (EAA).

We invite you to attend a **Public Open House** to introduce the project, and discuss the development and contents of the ToR, the EA process and the consultation process that will be followed during the development of the EA. The **Public Open House** is scheduled for **Thursday January 30th, 2020** at the **Moose Creek Recreation Centre, 4 St Polycarp St, Moose Creek, Ontario** from **4 p.m. to 8 p.m.** We hope that your schedule will permit you to attend.

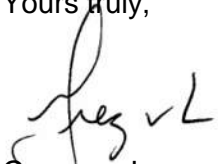
You are encouraged to participate in helping us identify issues, interests or ideas to be addressed throughout the EA. We will continue to keep you updated on our EA and request your input through consultation events, the project website www.gflenv.com/moose-creek-eowhf and by mail, email or fax.



Members of the public, agencies, Indigenous communities and other interested persons are encouraged to continue to actively participate in the planning process by attending consultation opportunities or contacting staff directly with comments or questions.

If you have any questions regarding our project or the ToR, please do not hesitate to contact me at anytime.

Yours truly,

A handwritten signature in black ink, appearing to read "Greg v L".

Greg van Loenen
Environmental Compliance Officer
Telephone: (613) 538-2776 ext. 223
Email: gvanloenen@gflenv.com

Attachment: Notice of Commencement and Public Open House Terms of Reference for an Environmental Assessment – Future Development of the Eastern Ontario Waste Handling Facility



January 15, 2020

Eric Gjos
President
MNO Ottawa Métis Council
214 Montreal Road
Ottawa, ON K1L 8L8

Dear Eric Gjos,

Subject: GFL Environmental Inc. Notice of Commencement and Public Open House Terms of Reference for an Environmental Assessment – Future Development of the Eastern Ontario Waste Handling Facility

On behalf of GFL Environmental Inc., I would like to inform you that we are commencing an Environmental Assessment (EA) seeking approval for the future development of our existing Eastern Ontario Waste Handling Facility (EOWHF) in Moose Creek, Ontario. GFL has determined that there is a sustainable business opportunity and need for the EOWHF to continue to provide landfill disposal capacity over the long term.

The EOWHF is located within the Township of North Stormont, approximately 5 kilometres north-northwest of the village of Moose Creek, Ontario, and 5 kilometres east of the village of Casselman, Ontario. The proposed future development will be on land currently owned or to be owned by GFL, and may include an area of the existing EOWHF if necessary. The location of the existing EOWHF and the proposed future development are shown in the attached Notice.

A copy of the Notice of Commencement and Public Open House for the Terms of Reference, which is the initial step in the EA process, is attached. The purpose of the EA is to assess the potential effects of the proposed future development on the environment. The EA will be carried out in accordance with the requirements of the *Environmental Assessment Act* (EAA).

We invite you to attend a **Public Open House** to introduce the project, and discuss the development and contents of the ToR, the EA process and the consultation process that will be followed during the development of the EA. The **Public Open House** is scheduled for **Thursday January 30th, 2020** at the **Moose Creek Recreation Centre, 4 St Polycarp St, Moose Creek, Ontario** from **4 p.m. to 8 p.m.** We hope that your schedule will permit you to attend.

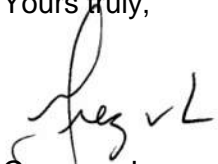
You are encouraged to participate in helping us identify issues, interests or ideas to be addressed throughout the EA. We will continue to keep you updated on our EA and request your input through consultation events, the project website www.gflenv.com/moose-creek-eowhf and by mail, email or fax.



Members of the public, agencies, Indigenous communities and other interested persons are encouraged to continue to actively participate in the planning process by attending consultation opportunities or contacting staff directly with comments or questions.

If you have any questions regarding our project or the ToR, please do not hesitate to contact me at anytime.

Yours truly,

A handwritten signature in black ink, appearing to read "Greg v L".

Greg van Loenen
Environmental Compliance Officer
Telephone: (613) 538-2776 ext. 223
Email: gvanloenen@gflenv.com

Attachment: Notice of Commencement and Public Open House Terms of Reference for an Environmental Assessment – Future Development of the Eastern Ontario Waste Handling Facility

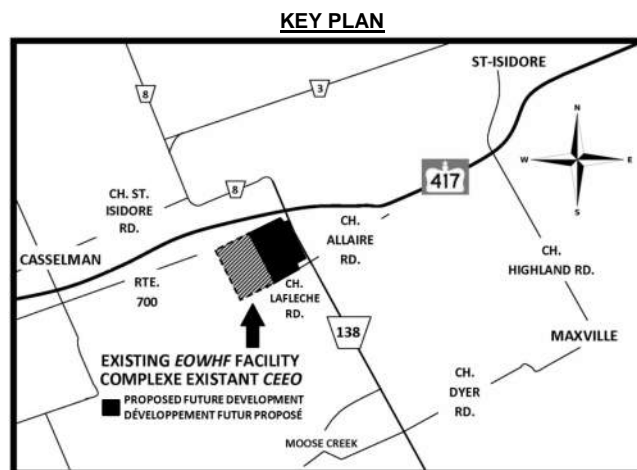
Notice of Commencement and Public Open House Terms of Reference for an Environmental Assessment Future Development of the Eastern Ontario Waste Handling Facility

GFL Environmental Inc., the owner and operator of the existing *Eastern Ontario Waste Handling Facility* (EOWHF) in Moose Creek, Ontario, has initiated an Environmental Assessment (EA) seeking approval for the future development of the EOWHF. The future development will involve the construction of additional landfill disposal capacity. GFL has determined that there is a sustainable business opportunity and need for the EOWHF to continue to provide disposal capacity over the long term. By developing this additional disposal capacity, GFL will also be able to continue providing economical waste diversion and green bin organics composting services to customers into the future. The EOWHF is a major employer and financial contributor to the local community. The development of an additional 15.1 million cubic metres of disposal capacity over a 20 year planning period will allow GFL to continue to provide this type of economic support to the local community. No changes to the approved fill rates or site access routes are proposed.

The EOWHF is located within the Township of North Stormont, approximately 5 kilometres north-northwest of the village of Moose Creek, Ontario, and 5 kilometres east of the village of Casselman, Ontario. The proposed future development will be on land currently owned or to be owned by GFL, and may include an area of the existing EOWHF if necessary. The location of the existing EOWHF and the proposed future development are shown on the Key Plan below. The purpose of the EA is to assess the potential effects of the future development on the environment.

The Process

The EA will be carried out in accordance with the requirements of the *Environmental Assessment Act*. The first step in the process is the preparation of a Terms of Reference. The Terms of Reference will set out the proponent's framework and work plan for addressing the *Environmental Assessment Act* requirements when preparing the EA, including such things as the alternatives that will be considered and the public consultation activities that will be carried out. If approved by the Minister, the Terms of Reference will provide the framework and requirements for the preparation of the EA.



Consultation

Members of the public, agencies, Indigenous communities and other interested persons are encouraged to actively participate in the planning process by attending consultation opportunities or contacting staff directly with comments or questions. Consultation opportunities are planned throughout the planning process and will be advertised in local newspapers, on the project website www.gflenv.com/moose-creek-eowhf and by direct and/or electronic mail (email).

A **Public Open House** to introduce the project, discuss the development and contents of the Terms of Reference, the EA process, and the consultation process that will be followed during the development of the EA is scheduled for **Thursday, January 30th, 2020** at the **Moose Creek Recreation Centre, 4 St Polycarp St, Moose Creek, ON** from **4 p.m. to 8 p.m.**

You are encouraged to attend and participate in helping us identify issues, interests or ideas to be addressed in the EA. In addition to attending the Public Open House, you are invited to submit your comments by mail, email, or fax to the contact for the project provided below. If you would like to be added to the project mailing list or have project-related questions, please contact:

Mr. Greg van Loenen, Environmental Compliance Officer
GFL Environmental Inc.
17125 Lafleche Road, Moose Creek, Ontario K0C 1W0
Telephone: 613-538-2776 ext. 223
Fax: 613-538-2779
Email: gvanloenen@gflenv.com

All personal information included in a submission – such as name, address, telephone number and property location – is collected, maintained and disclosed by the Ministry of the Environment, Conservation and Parks for the purposes of transparency and consultation. The information is collected under the authority of the Environmental Assessment Act or is collected and maintained for the purpose of creating a record that is available to the general public as described in s.37 of the Freedom of Information and Protection of Privacy Act. Personal information you submit will become part of a public record that is available to the general public unless you request that your personal information remain confidential. For more information, please contact the Ministry of the Environment, Conservation and Parks' Freedom of Information and Privacy Coordinator at 416-327-1434.

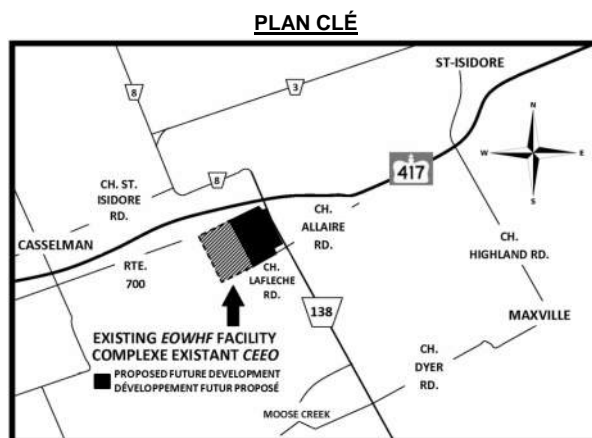
Avis de commencement et portes ouvertes Cadre de référence pour une évaluation environnementale Développement du futur centre de traitement des déchets de l'est de l'Ontario

GFL Environmental Inc., propriétaire et exploitant de l'actuel centre de traitement des déchets de l'est de l'Ontario (EOWHF) à Moose Creek, en Ontario, a entrepris une évaluation environnementale (EE) en vue d'obtenir l'approbation pour le futur développement du EOWHF. Le futur développement comprendra la construction d'une capacité supplémentaire d'élimination du site d'enfouissement. GFL a déterminé qu'il y a une occasion d'affaires durable et que l'EOWHF doit continuer à fournir une capacité d'élimination à long terme. En développant cette capacité d'élimination supplémentaire, GFL sera également en mesure de continuer à fournir des services de réduction de déchets et de compostage des matières organiques à ses clients. L'EOWHF est un employeur et un contributeur financier important pour la communauté locale. Le développement d'une capacité d'élimination supplémentaire de 15,1 millions de mètres cubes sur une période de planification de 20 ans permettra à GFL de continuer à fournir ce type de soutien économique à la collectivité locale. Aucun changement au volume d'enfouissement autorisé ou aux routes d'accès au site n'est proposé.

L'EOWHF est situé dans le canton de North Stormont, à environ 5 kilomètres au nord-nord-ouest du village de Moose Creek, en Ontario, et à 5 kilomètres à l'est du village de Casselman, en Ontario. Le futur développement proposé sera situé sur des terrains qui appartiennent actuellement ou qui seront détenues par GFL, et pourrait inclure une zone de l'EOWHF existant si nécessaire. L'emplacement de l'EOWHF existant et le futur développement proposé sont indiqués dans le Plan clé ci-dessous. L'EE a pour objet d'évaluer les effets potentiels du futur développement sur l'environnement.

Le processus

L'EE sera effectuée conformément aux exigences de la Loi sur l'évaluation environnementale. La première étape du processus est la préparation du cadre de référence. Le cadre de référence établira le cadre de travail et le plan de travail du promoteur pour répondre aux exigences de la Loi sur l'évaluation environnementale au moment de préparer l'EE, y compris les solutions de rechange qui seront envisagées et les activités de consultation publique qui seront menées. Si le ministre l'approuve, le cadre de référence fournira le cadre et les exigences pour la préparation de l'EE.



Consultation

Les membres du public, les organismes, les communautés autochtones et les autres personnes intéressées sont encouragées à participer activement au processus de planification en assistant aux consultations ou en communiquant directement avec le personnel pour lui faire part de leurs commentaires ou leurs questions. Des possibilités de consultation sont prévues tout au long du processus de planification et seront annoncées dans les journaux locaux, sur le site Web du projet www.gflenv.com/moose-creek-eowhf et par courrier direct et/ou électronique (courriel).

Une **journée portes ouvertes** pour présenter le projet, discuter de l'élaboration et du contenu du mandat, du processus d'EE et du processus de consultation qui sera suivi pendant l'élaboration de l'EE est prévue pour **le jeudi 30 janvier 2020 au Moose Creek Recreation Centre, 4 St Polycarp St, Moose Creek, ON de 16 h à 20 h.**

Nous vous encourageons à y assister et à participer afin de nous aider à cerner les enjeux, les intérêts ou les idées à aborder dans l'EE. En plus d'assister à la journée portes ouvertes, nous vous invitons à envoyer vos commentaires par la poste, par courriel ou par télécopieur à la personne-ressource du projet indiquée ci-dessous. Si vous souhaitez être ajouté à la liste de diffusion du projet ou si vous avez des questions liées au projet, veuillez communiquer avec :

M. Greg van Loenen, agent de conformité environnementale
GFL Environmental Inc.
17125, chemin Laflèche, Moose Creek (Ontario) K0C 1W0
Téléphone : 613-538-2776 ext. 223
Télécopieur : 613-538-2779
Courriel : gvanloenen@gflenv.com

Tous les renseignements personnels inclus dans une présentation – comme le nom, l'adresse, le numéro de téléphone et l'emplacement de la propriété – sont recueillis, conservés et communiqués par le ministère de l'Environnement, Conservation et Parc à des fins de transparence et de consultation. Les renseignements sont recueillis en vertu de la Loi sur l'évaluation environnementale ou sont recueillis et conservés aux fins de la création d'un document accessible au grand public conformément à l'article 37 de la Loi sur l'accès à l'information et Loi sur la protection de la vie privée. Les renseignements personnels que vous soumettez seront versés dans un dossier public qui est accessible au grand public, à moins que vous ne demandiez que vos renseignements personnels demeurent confidentiels. Pour de plus amples renseignements, veuillez communiquer avec le coordonnateur de l'accès à l'information et de la protection des renseignements personnels du ministère de l'Environnement, de la Conservation et des Parcs au 416-327-1434.

From: Maxime Picard [<mailto:maxime.picard@cnhw.qc.ca>]
Sent: Thursday, January 16, 2020 8:48 AM
To: Greg van Loenen <gvanloenen@gflenv.com>
Subject: Eastern Ontario Waste Handling Facility

CAUTION: This email originated from outside of the organization. Do not click links or open attachments unless you recognize the sender and know the content is safe.

Good morning Greg,

First of all let me thank you for your letter addressed to Grand Chief Konrad Sioui on the Eastern Ontario Waste Handling Facility Project.

Could you please let us know if you plan to conduct any archaeological assessment as part of the EA process ?

Thanks and best regards,

Maxime Picard



NATION HURONNE-WENDAT
Bureau du Nionwentsio

Maxime Picard, B. Sc. A.
Coordonnateur de projets - Ontario
255, Place Chef Michel-Laveau
Wendake (Qc) G0A 4V0
Téléphone : 418-843-3767 # 2105
Courriel : maxime.picard@cnhw.qc.ca



*Devez-vous vraiment imprimer ce courriel?
Pensons à l'environnement*

*Do you really need to print this email?
Think to the environment*

Avis sur la protection et la confidentialité des informations

L'information contenue dans ce courriel est confidentielle et protégée en vertu des lois et règlements applicables. Son contenu est réservé au(x) destinataire(s) à qui il est adressé. Il est donc interdit de le diffuser ou d'en dévoiler les intentions. Si vous recevez ce message par erreur, veuillez le détruire et nous en faire part dans les plus brefs délais.

Warning on protection and confidentiality of information

The information contained in this e-mail is confidential and protected in accordance with the applicable laws and regulations. Its content is intended specifically for the recipient(s) to whom it is addressed. It is therefore prohibited to distribute or to disclose the content. If you receive this communication by error, please destroy it and notify us as soon as possible.

From: Greg van Loenen
Sent: Thursday, January 16, 2020 4:10 PM
To: 'Maxime Picard' <maxime.picard@cnhw.qc.ca>
Subject: RE: Eastern Ontario Waste Handling Facility

Dear Maxime,

Thank you for your email and interest in our project.

It is our intention to undertake a Stage 1 Archaeological Assessment as part of the Terms of Reference process. We anticipate that this work will be completed in the first half of 2020.

We would be pleased to provide you with a copy of the report when it is available. A copy of the Stage 1 Archaeological Assessment of our existing landfill site property, adjacent to the proposed expansion area, was provided previously.

A description of the results of the Stage 1 Archaeological Assessment will be included in the Terms of Reference.

Please let me know if you require any additional information.

Regards,
Greg v L

From: Maxime Picard [<mailto:maxime.picard@cnhw.qc.ca>]
Sent: Monday, January 20, 2020 9:58 AM
To: Greg van Loenen <gvanloenen@gflenv.com>
Cc: Catherine Dupont <catherine.dupont@cnhw.qc.ca>
Subject: RE: Eastern Ontario Waste Handling Facility

CAUTION: This email originated from outside of the organization. Do not click links or open attachments unless you recognize the sender and know the content is safe.

Good morning Greg,

Thanks for following-up quickly.

Please effectively share with us the Stage 1 report once completed.

Have a great day,

Maxime



NATION HURONNE-WENDAT
Bureau du Nionwentsio

Maxime Picard, B. Sc. A.
Coordonnateur de projets - Ontario
255, Place Chef Michel-Laveau
Wendake (Qc) G0A 4V0
Téléphone : 418-843-3767 # 2105
Courriel : maxime.picard@cnhw.qc.ca



*Devez-vous vraiment imprimer ce courriel?
Pensons à l'environnement
Do you really need to print this email?
Think to the environment*

Avis sur la protection et la confidentialité des informations

L'information contenue dans ce courriel est confidentielle et protégée en vertu des lois et règlements applicables. Son contenu est réservé au(x) destinataire(s) à qui il est adressé. Il est donc interdit de le diffuser ou d'en dévoiler les intentions. Si vous recevez ce message par erreur, veuillez le détruire et nous en faire part dans les plus brefs délais.

Warning on protection and confidentiality of information

The information contained in this e-mail is confidential and protected in accordance with the applicable laws and regulations. Its content is intended specifically for the recipient(s) to whom it is addressed. It is therefore prohibited to distribute or to disclose the content. If you receive this communication by error, please destroy it and notify us as soon as possible.

From: Stavinga, Janet (Algonquins Of Ontario) [mailto:jstavinga@tanakiwin.com]
Sent: Thursday, February 6, 2020 11:53 AM
To: Sanzo, Adam (MECP)
Cc: Fedec, Larry ; Greg van Loenen ; Algonquins of Ontario Consultation Office
Subject: RE: The Future Development of the Eastern Ontario Waste Handling Facility

Thank you for contacting the Algonquins of Ontario Consultation Office. This automated response is your assurance that your message has been received by this office and will be reviewed as soon as resources permit. Due to the high volume of correspondence received by this office, we are not able to respond personally to every inquiry.

On October 18, 2016, the AOO and the Governments of Ontario and Canada reached a major milestone in their journey toward reconciliation and renewed relationships with the signing of the Agreement-in-Principle (AIP). The signing of the AIP is a key step toward a Final Agreement, which will clarify the rights of all concerned and open up new economic development opportunities for the benefit of the AOO and their neighbours in the Settlement Area in Eastern Ontario.

The AIP is not a legally binding document. Rather, it opens the way for continued negotiations toward a Final Agreement that will define the ongoing rights of the Algonquins of Ontario to lands and natural resources within the Settlement Area in Eastern Ontario. For further information about the AIP please refer to our website at www.tanakiwin.com.

An interactive web-based map has also been developed to provide a single access point for users to easily explore and navigate through the AIP's various Reference Maps and Descriptive Plans associated with the proposed land selections and Areas of Algonquin Interest. To access the map, click [here](#).

Please do not hesitate to contact our office at the coordinates below should you have any questions regarding the status of your query.

This automated message may not be relied upon to fulfil, in whole or part, any duty to consult the Algonquins of Ontario.

Sincerely,

Ashley Bernard
Consultation Administrator
Algonquins of Ontario Consultation Office
31 Riverside Drive, Suite 101
Pembroke, ON K8A 8R6
Tel: 613-735-3759
Fax: 613-735-6307
Email: algonquins@tanakiwin.com
Website: www.tanakiwin.com

CONFIDENTIAL AND PRIVILEGED INFORMATION NOTICE

This e-mail, and any attachments, may contain information that is confidential, subject to copyright, or exempt from disclosure. Any unauthorized review, disclosure, retransmission, dissemination or other use of or reliance on this information may be unlawful and is strictly prohibited.



May 8, 2020

Subject: GFL Environmental Inc. Proposed Terms of Reference for an Environmental Assessment – Future Development of the Eastern Ontario Waste Handling Facility

As published in the Notice of Commencement, GFL Environmental Inc. has commenced an Environmental Assessment (EA) seeking approval for the future development of our existing Eastern Ontario Waste Handling Facility (EOWHF) in Moose Creek, Ontario. GFL appreciates the involvement of the public, agencies, and Indigenous communities in the EA, including the participation of interested parties at our Public Open House #1 event held on January 30, 2020, and the feedback provided which will allow us to address concerns and develop a better project.

We wanted to provide you with an update on our project and outline how we are responding to the comments received to-date. The display materials from Public Open House #1 (POH #1) are posted on the project website (www.gflenv.com/moose-creek-eowhf/) along with a Summary Report, which provides the details of POH #1.

At POH #1, along with the lead up and subsequent follow up, we heard your comments and concerns regarding odours from the EOWHF's existing operations. In 2017, GFL initiated a 3-year plan to enhance the management of landfill gas (LFG) at the EOWHF, and we believe that substantial improvements have been achieved to-date. LFG extraction wells, which are under a constant vacuum to pull LFG from the landfill to the LFG utilization facility, are installed every year to capture the LFG generated within the most recently landfilled waste. There are now 198 extraction wells in operation with an additional 114 wells pending for the remainder of the landfill. GFL is also boosting the suction and destruction capacity of the on-site LFG utilization facility by installing a second blower skid and a third gas flare, anticipated to be operational by the end of summer 2020. An LFG Management handout outlining these site enhancements is available on our project website. GFL will continue to proactively undertake measures to minimize the potential for odours from operations.

A range of other comments were received and considered by GFL. Responses were developed for each comment to outline how the issue will be considered in the EA process. A copy of the tabulated comments and responses is available on the project website.

... 2





Through the EOWHF, GFL is a major contributor to Moose Creek, North Stormont, Casselman and the broader surrounding communities. We are committed to being a good neighbour, employer and supporter of local businesses and communities. A Community Benefits handout outlining how we are “Keeping It Local” is available on the project website. Our future development project will allow us to continue being an essential service and contributor to the region.

GFL is committed to ongoing consultation and engagement with our neighbours and anyone having an interest in the project. Once it is again safe to do so, we will be responding to requests for tours of the EOWHF and providing further in-person opportunities to discuss the project. We will be working to determine how best to conduct these activities that is respectful of personal safety and physical distancing guidelines.

Members of the public, agencies, Indigenous communities, and other interested persons are encouraged to continue to actively participate in our EA process. In early June, we are planning to make available a draft Terms of Reference (ToR) for review and comment. Broad notification of the availability of the draft ToR will be provided at that time.

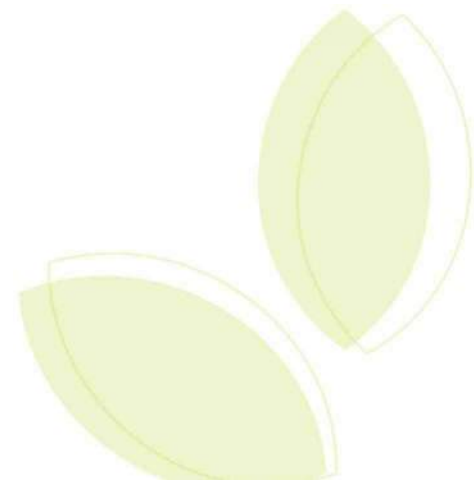
In the interim, if you have any questions or comments on our proposed project please contact me at (613) 538-2776 ext. 223 or gvanloenen@gflenv.com.

Thank you for your time and interest in our proposed project.

Yours truly,

A handwritten signature in black ink, appearing to read 'Greg vL'.

Greg van Loenen
Environmental Compliance Officer
Telephone: (613) 538-2776 ext. 223
Email: gvanloenen@gflenv.com



Le 8 mai 2020

Objet : Cadre de références proposé par GFL Environmental Inc. pour une évaluation environnementale – Futur développement de l’installation de manutention des déchets de l’Est de l’Ontario

Tel que publié dans l'avis de projet, GFL Environmental Inc. a débuté les travaux d'évaluation environnementale afin d'obtenir l'autorisation pour le futur développement de l'installation de manutention des déchets de l'Est de l'Ontario (EOWHF) de Moose Creek, en Ontario. GFL est reconnaissante de la contribution des citoyens, des organismes et des communautés autochtones au processus d'évaluation environnementale, ainsi qu'aux divers groupes d'intérêt qui ont participé à notre activité publique d'information tenue le 30 janvier 2020. Les commentaires et suggestions recueillis nous permettront de tenir compte des préoccupations exprimées et bonifier notre projet.

Nous tenons à vous présenter un état de la situation de notre projet et à partager comment nous comptons répondre aux commentaires soulevés jusqu'à présent. Vous trouverez sur le site Internet du projet (www.gflenv.com/moose-creek-eowhf/) tous les documents présentés lors de notre activité d'information de même qu'un résumé des échanges tenus lors de cette soirée.

Au cours de cette activité, de même que durant les jours qui ont précédé et suivi cette soirée d'information publique, nous avons entendu vos commentaires et vos préoccupations concernant les odeurs associées aux activités actuelles de l'EOWHF. En 2017, GFL a mis en œuvre un plan triennal pour améliorer la gestion du biogaz à l'EOWHF et nous croyons que des améliorations significatives ont été réalisées jusqu'à présent. L'extraction du biogaz est réalisée par des puits de captage reliés à un système d'aspiration continue. Notons que des puits de captage sont installés à chaque année afin d'extraire le biogaz produits par les matières résiduelles enfouies plus récemment. Présentement, 198 puits de captage sont en service et 114 autres puits sont prévus pour le reste du site. De plus, GFL augmentera d'ici la fin de l'été 2020 la capacité d'aspiration et de destruction de ses équipements de gestion du biogaz en installant un deuxième système d'aspiration et une troisième torchère. Un document relatif aux équipements et améliorations destinés à optimiser la gestion du biogaz est disponible sur le site Internet du projet. Soyez assuré que GFL entend continuer d'être proactive dans la mise en place de mesures visant à minimiser les odeurs reliées à ses activités.

... 2



D'autres commentaires ont été reçus et analysés par GFL. Des réponses ont été élaborées pour chaque commentaire afin qu'il soit pris en compte dans le processus d'évaluation environnementale. Une compilation des commentaires et des réponses est disponible sur le site Internet du projet.

Par l'entremise de l'EOWHF, GFL est aussi un important partenaire corporatif à Moose Creek, North Stormont, Casselman et dans les communautés environnantes. Nous continuerons d'agir comme un bon voisin et un employeur responsable, ainsi qu'à encourager les entreprises locales et les groupes du milieu. Un document soulignant notre engagement à contribuer au développement de la communauté (*Keeping it Local*) est disponible sur le site Internet du projet. Notre futur projet de développement nous permettra de maintenir notre rôle de service essentiel et un contributeur à la région.

GFL s'engage à consulter et échanger de façon continue avec ses voisins et toutes les personnes intéressées à notre projet. Une fois qu'il sera à nouveau possible de le faire en toute sécurité, nous organiserons des visites de nos installations afin d'offrir d'autres occasions de discuter de notre projet en personne. Toutes les mesures de sécurité seront mises en place afin que ces activités soient tenues de façon sécuritaire et dans le respect des règles de distanciation sociale.

Les citoyens, les agences gouvernementales, les communautés autochtones et toutes les personnes intéressées par notre projet sont invités à continuer de participer activement à notre démarche d'évaluation environnementale. Au début du mois de juin, nous prévoyons déposer la version préliminaire du cadre de références (ToR) pour consultation et afin de recueillir vos commentaires. Au moment opportun, un avis public sera diffusé à cet effet.

D'ici là, si vous avez des questions ou des commentaires sur notre projet, vous pouvez me rejoindre au (613) 538-2776, poste 223 ou à gvanloenen@gflenv.com.

En vous remerciant de l'attention que vous portez à notre projet, veuillez accepter l'expression de nos sentiments les meilleurs.

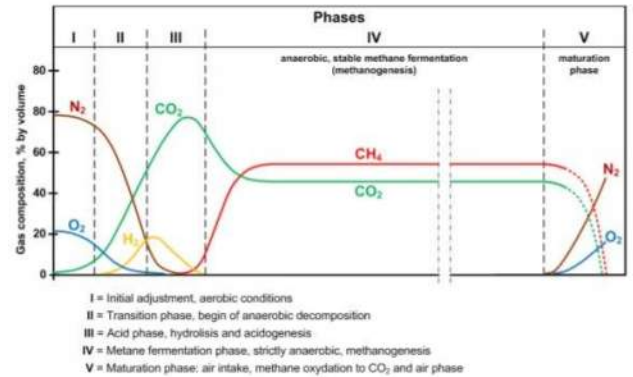


Greg van Loenen
Responsable de la conformité environnementale
Téléphone: (613) 538-2776, poste 223
Courriel: gvanloenen@gflenv.com



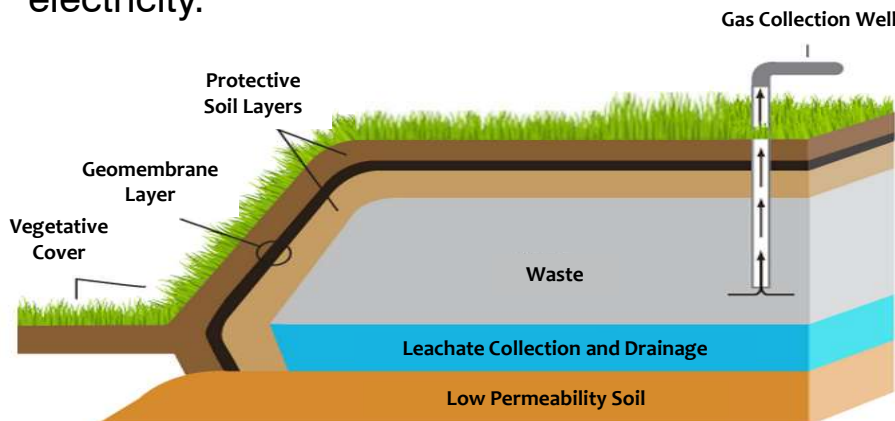
What causes landfill odours?

- Waste decomposes in an anaerobic (no oxygen) environment. Anaerobic decomposition produces landfill gas (LFG) that consists of:
 - Methane - 50-55%
 - Carbon Dioxide – 45-50%
 - Others (H₂S, VOCs, siloxanes) – 1%



How are we managing LFG?

- Daily Waste Placement:
 - Apply 15 cm of soil cover each working day
 - Operate odour masking misting system
- Full Landfill Cells:
 - Apply 30 cm of soil cover
 - Install biogas extraction wells
 - 198 in operation now
 - Place engineered impermeable liner
 - Finish with topsoil and vegetation
- LFG is removed from the landfill by the extraction wells under a constant vacuum, and travels through buried piping to the onsite Landfill Gas to Energy Facility, generating electricity.



EOWHF Landfill Gas Management



The Landfill Gas to Energy Facility began operation in 2012 and consists of **4 GE Jenbacher Engines** which produce **4.2 MW** of electricity, powering approximately **4,000 homes**.

A 3,000 cfm flare burns surplus biogas.



- Stage 1 - 72 wells
- Stage 2 - 72 wells
- Stage 3A - 54 wells in place
- Stage 3B & 4 - 114 pending

Additional LFG management infrastructure to be installed in 2020 includes a second blower skid, a third flare, and design modifications to maximize biogas capture.

Approximately \$6 million being spent annually on LFG management related infrastructure.

Routine landfill surface scans are conducted to detect and address fugitive emissions.

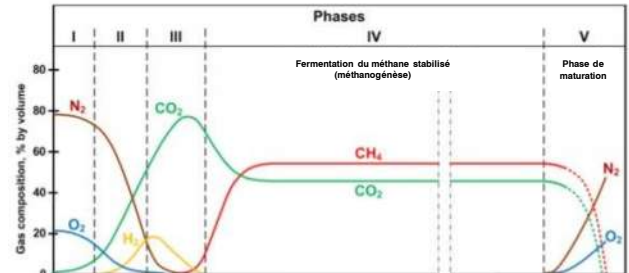


To learn more about our work and progress please contact:

Mr. Greg van Loenen
Environmental Compliance Officer
GFL Environmental Inc.
17125 Lafleche Road, Moose Creek, Ontario K0C 1W0
Telephone: 613-538-2776 ext. 223
Fax: 613-538-2779
Email: gvanloenen@gflenv.com

Comment sont générées les odeurs?

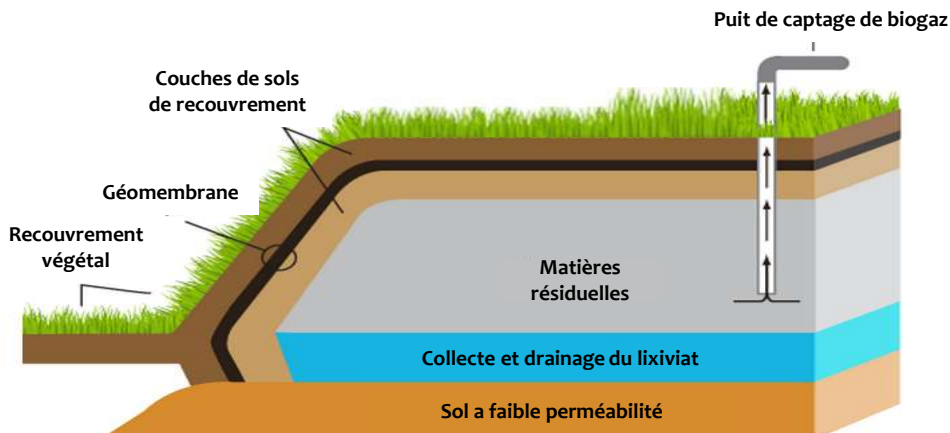
- Les matières résiduelles se décomposent dans un milieu anaérobique (sans oxygène). La décomposition anaérobique produit un biogaz fait de:
 - Méthane - 50-55 %
 - Dioxyde de carbone - 45-50 %
 - Autres (H_2S , VOCs, siloxanes) - 1%



I: Conditions initiales aérobiques
II: Phase de transition, début de la décomposition anaérobique
III: Phase acide, hydrolyse et acidogénèse
IV: Phase de fermentation du méthane, strictement anaérobique, méthanogénèse
V: Phase de maturation: oxydation du méthane en CO₂

Comment nous traitons le biogaz?

- Disposition journalière des matières résiduelles
 - Recouvrement de 15 cm de sols après chaque journée de travail
 - Utilisation de brumisateurs pour masquer les odeurs
- Cellules d'enfouissement à pleine capacité:
 - Recouvrement de 30 cm de sols
 - Installation de capteurs de biogaz
 - Actuellement 198 en service
 - Installation d'une géomembrane imperméable
 - Recouvrement final et ensemencement
- L'extraction du biogaz se fait à l'aide de capteurs et d'un système d'aspiration pour ensuite être transportés par un réseau de collectrices vers l'usine de cogénération de biogaz (implantée sur le site) qui produira de l'électricité.



GESTION DU BIOGAZ (EOWHF)



L'usine de cogénération de biogaz est entrée en service en 2012 et compte **4 génératrices GE Jenbacher** qui produisent **4.2 MW** d'électricité pouvant alimenter environ **4,000 résidences**.

Une torchère de 3,000 cfm pour détruire les surplus de biogaz.

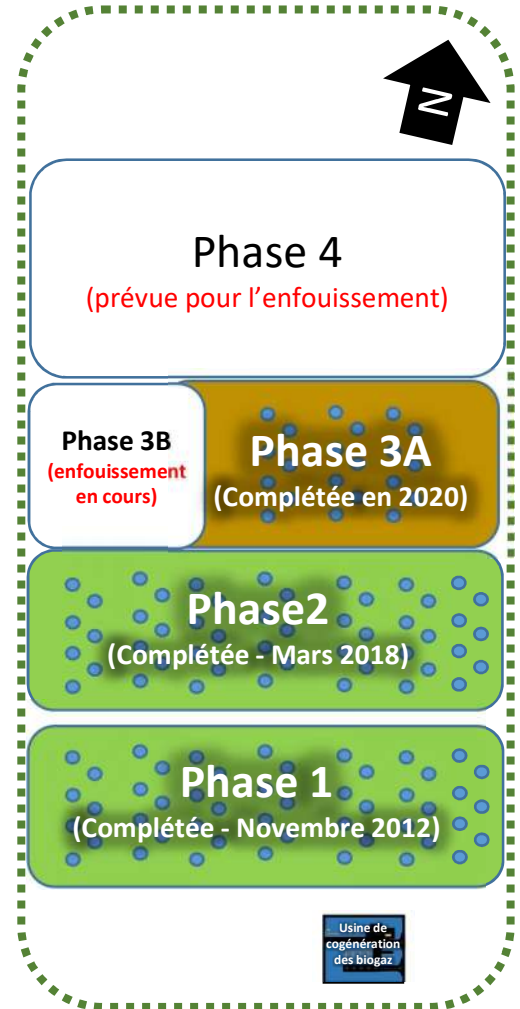


- Phase 1 - 72 puits de captage
- Phase 2 - 72 puits de captage
- Phase 3A - 54 puits de captage en place
- Phase 3B & 4 - 114 puits de captage sont prévus

D'autres mesures de gestion du biogaz sont prévus en 2020, telles que l'augmentation du système d'aspiration, une 3^e torchère et d'autres modifications pour optimiser le captage des biogaz.

Environ 6 millions \$ sont investis annuellement dans des équipements de gestion du biogaz.

Relevés des émissions surfaciques du site afin de détecter et colmater les fuites de biogaz.



Pour en savoir plus sur nos projets et nos activités, veuillez communiquer avec:

Mr. Greg van Loenen
Responsable de la conformité environnementale
GFL Environmental Inc.
17125, route Laflèche, Moose Creek, Ontario K0C 1W0
Téléphone: 613-538-2776, poste 223
Télécopieur: 613-538-2779
Courriel: gvanloenen@gflenv.com

Keeping It Local



EOWHF is a **major contributor** to Moose Creek, North Stormont, Casselman & surrounding communities



Largest Employer in North Stormont

Annually procure approximately **\$10 million** of goods and services within the region

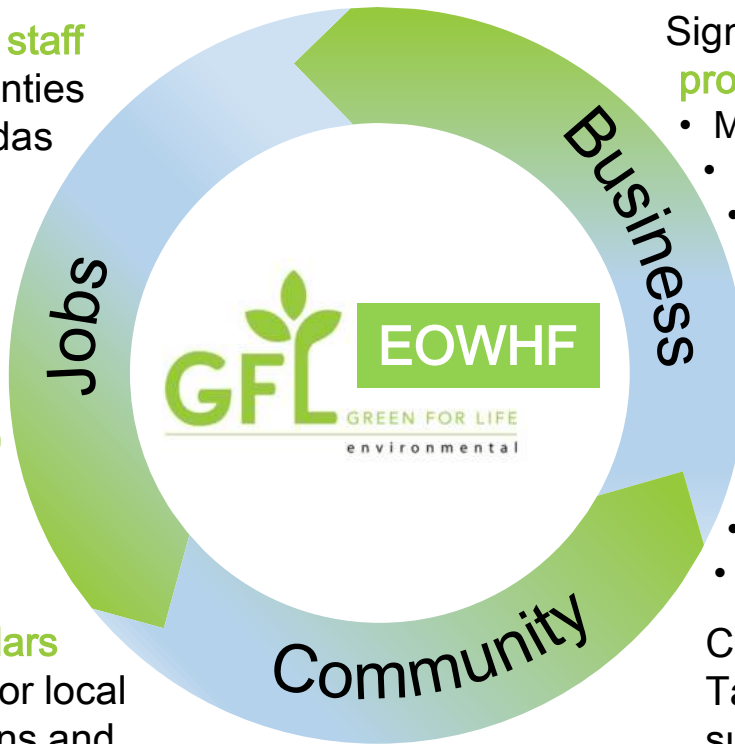
Approximately **30 staff** live in United Counties of Stormont, Dundas and Glengarry

Significant local **procurement** includes:

Provide **stable full-time jobs** to local residents

- MacEwen Fuels
- Wanna Make It Farms
- Les Sols Calco Soils
- Microtel Inn & Suites
- HF Smith & Son
- McDonald Electric
- A.L. Blair Construction
- Lou-Tec - Electrotek
- Rolland Plumbing
- Olsenfab Metal

Contributed **\$500,000** to Finch Arena renovation



Thousands of dollars annually to sponsor local teams, associations and municipal functions

Contributed **\$10,000** to Tastefest in 2019, supporting the Moose Creek Pool

Host waste management **educational events** for local groups

Host Community Agreement: contribute \$1 per tonne to the host community. Over \$600,000 provided in 2019



To learn more about our work and progress please contact:

Mr. Greg van Loenen
 Environmental Compliance Officer
 GFL Environmental Inc.
 17125 Lafleche Road, Moose Creek, Ontario K0C 1W0
 Telephone: 613-538-2776 ext. 223
 Fax: 613-538-2779
 Email: gvanloenen@gflenv.com

Partenaire dans la communauté



EOWHF est un **important partenaire corporatif** à Moose Creek, North Stormont, Casselman et dans les communautés environnantes



Environ **10 millions \$ par année** pour l'achat de biens et services dans la région

Plus grand employeur à North Stormont

Environ **30 employés** habitent dans les cantons de Stormont, Dundas and Glengarry

Offre des **emplois réguliers à temps plein** aux citoyens de la communauté

Soutien financier de **500,000 \$** pour la rénovation de l'aréna de Finch

Contribution annuelle de **plusieurs milliers de dollars** aux équipes, associations et événements dans la communauté

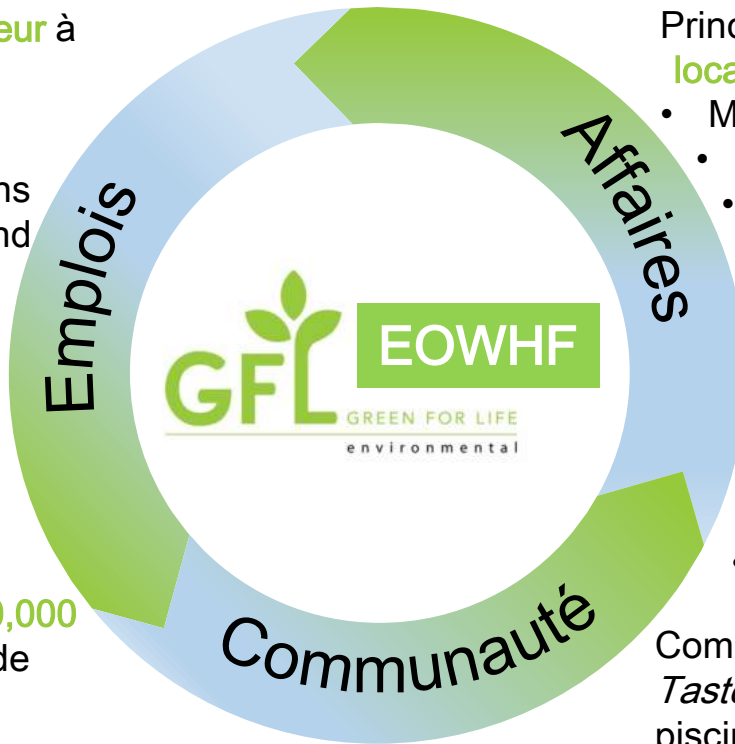
Redevances annuelles remises à la communauté - 1 \$ par tonne.
Plus de 600,000 \$ remis en 2019

Principaux **fournisseurs locaux**:

- MacEwen Fuels
- Wanna Make It Farms
- Les Sols Calco Soils
- Microtel Inn & Suites
- HF Smith & Son
- McDonald Electric Construction
- A.L. Blair
- Lou-Tec - Electrotek
- Rolland Plumbing
- Olsenfab Metal

Commandite de **10,000 \$** au *Tastefest* en 2019 pour la piscine de Moose Creek

Activités éducatives sur la gestion des matières résiduelles pour les groupes locaux



Si vous souhaitez soumettre une question, veuillez communiquer avec:

Mr. Greg van Loenen
Responsable de la conformité environnementale
GFL Environmental Inc.
17125 Lafleche Road, Moose Creek, Ontario K0C 1W0
Téléphone: 613-538-2776 poste 223
Télécopieur: 613-538-2779
Courriel: gvanloenen@gflenv.com



June 12, 2020

Subject: Notice of Review – Draft Terms of Reference for an Environmental Assessment, Future Development of the Eastern Ontario Waste Handling Facility

As published in the Notice of Commencement, GFL Environmental Inc. has commenced an Environmental Assessment (EA) seeking approval for the future development of the existing Eastern Ontario Waste Handling Facility (EOWHF) in Moose Creek, Ontario.

GFL has determined that there is a sustainable business opportunity and need for the EOWHF to continue to provide disposal capacity over the long term. The development of approximately 15.1 million cubic metres of additional landfill disposal capacity over a 20-year planning period will allow GFL to continue providing economical waste diversion and green bin organics composting services to customers into the future. No changes to the approved fill rates or site access routes are proposed.

The Draft ToR will be available for review on **June 12, 2020**. Members of the public, agencies, Indigenous communities, and other interested persons are encouraged to actively participate in reviewing and providing comments on the Draft ToR. We request that you provide any questions or comments to the study team using the contact information provided below by **July 31, 2020**. All comments received as part of this review will be considered in the preparation of the Final ToR.

Due to the COVID-19 pandemic, the Draft ToR will not be available for review in person at publicly-accessible locations. For your reference and review, a USB drive containing an electronic copy of the Draft ToR is enclosed. The Record of Consultation and Engagement is available for review on the GFL project website at www.gflenv.com/moose-creek-eowhf.

You are encouraged to submit your comments or questions on the Draft ToR by mail, email, telephone, or fax to the attention of:

Mr. Greg van Loenen, Environmental Compliance Officer
GFL Environmental Inc.
17125 Lafleche Road, Moose Creek, Ontario K0C
1W0 Telephone: 613-538-2776 ext. 223
Fax: 613-538-2779
Email: gvanloenen@gflenv.com

Thank you for your time and interest in our proposed project.

Yours truly,

A handwritten signature in black ink that reads 'Greg v L'.

Greg van Loenen
Environmental Compliance Officer
Telephone: (613) 538-2776 ext. 223
Email: gvanloenen@gflenv.com



12 juin 2020

**Objet: Avis de révision – Ébauche du cadre de référence pour une évaluation environnementale
Développement futur de l'installation de traitement des déchets de l'Est de l'Ontario**

Tel que publié dans l'avis de commencement du projet, GFL Environmental Inc. a débuté les travaux d'évaluation environnementale afin d'obtenir l'autorisation pour le futur développement de l'installation de manutention des déchets de l'Est de l'Ontario (EOWHF) de Moose Creek, en Ontario.

GFL considère que ce projet représente une opportunité de développement durable et qu'il permettra à l'EOWHF de continuer d'offrir une capacité de disposition à long terme. Le développement d'environ 15,1 millions de mètres cubes de capacité supplémentaire de disposition de déchets sur une période d'environ 20 ans permettra à GFL de continuer d'offrir dans l'avenir, de façon abordable, divers services de récupération des matières résiduelles et de compostage des matières organiques. Aucune modification relative aux tonnages autorisés et aux voies d'accès au site n'est envisagée.

L'ébauche du cadre de références (ToR) sera disponible pour examen le **12 juin 2020**. Les membres du public, les agences, les communautés autochtones et les autres personnes intéressées sont encouragées à participer activement à l'examen et à la formulation de commentaires sur l'ébauche du ToR. Nous vous demandons de soumettre vos questions ou commentaires à l'équipe d'étude en utilisant les coordonnées fournies ci-dessous avant le **31 juillet 2020**. Tous les commentaires reçus dans le cadre de cet examen seront pris en compte dans la préparation du cadre de référence final.

En raison de la COVID-19, il ne sera pas possible de consulter en personne, dans un endroit public, l'ébauche du ToR. Cependant, afin de vous permettre de consulter le document, une version électronique de celui-ci se trouve sur la clé USB ci-jointe. Le rapport de consultation et des engagements de GFL peut être consulté sur le site Internet de l'entreprise à l'adresse : www.gflenv.com/moose-creek-eowhf.

Nous vous encourageons à soumettre vos commentaires ou questions sur l'ébauche du ToR par courrier, téléphone ou fax à l'attention de :

M. Greg van Loenen, agent de conformité environnementale
GFL Environmental Inc.
17125, chemin Lafleche, Moose Creek (Ontario) K0C 1W0
Téléphone : 613-538-2776 ext. 223
Télécopieur : 613-538-2779
Courriel : gvanloenen@gflenv.com

Merci de l'intérêt que vous portez à l'égard de notre projet,



M. Greg van Loenen
Agent de conformité environnementale
Téléphone: (613) 538-2776 ext. 223
gvanloenen@gflenv.com



Notice of Review

Draft Terms of Reference for an Environmental Assessment Future Development of the Eastern Ontario Waste Handling Facility

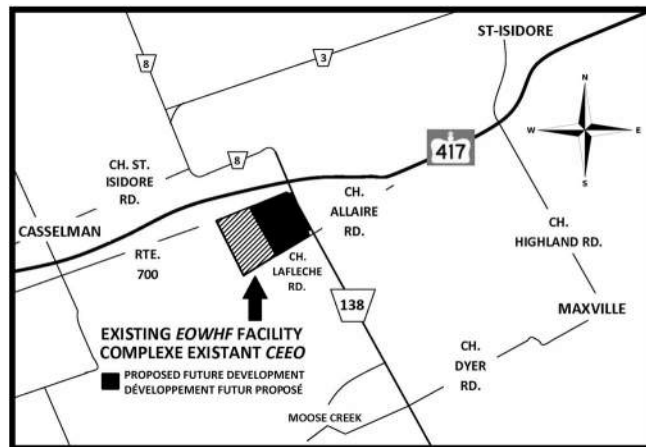
GFL Environmental Inc., the owner and operator of the existing Eastern Ontario Waste Handling Facility (EOWHF) in Moose Creek, Ontario, has initiated an Environmental Assessment (EA) seeking approval for the future development of the EOWHF. The future development will involve the construction of additional landfill disposal capacity. GFL has determined that there is a sustainable business opportunity and need for the EOWHF to continue to provide disposal capacity over the long term. By developing this additional disposal capacity, GFL will also be able to continue providing economical waste diversion and green bin organics composting services to customers into the future. The EOWHF is a major employer and financial contributor to the local community. The development of approximately 15.1 million cubic metres of additional landfill disposal capacity over a 20-year planning period will allow GFL to continue to provide this type of economic support to the local community. No changes to the approved fill rates or site access routes are proposed.

The EOWHF is located within the Township of North Stormont, approximately 5 kilometres north-northwest of the village of Moose Creek, Ontario, and 5 kilometres east of the village of Casselman, Ontario. The proposed future development will be on land currently owned or to be owned by GFL, and may include an area of the existing EOWHF if necessary. The location of the existing EOWHF and the proposed future development are shown on the Key Plan below. The purpose of the EA is to assess the potential effects of the future development on the environment.

The Process

The EA will be carried out in accordance with the requirements of *the Environmental Assessment Act*. The first step in the process is the preparation of a Terms of Reference (ToR). The ToR will set out the proponent's framework and work plan for addressing the *Environmental Assessment Act* requirements when preparing the EA, including such things as the alternatives that will be considered and the public consultation and engagement activities that will be carried out. If approved by the Minister of Environment, Conservation and Parks, the ToR will provide the framework and requirements for the preparation of the EA.

KEY PLAN



Draft ToR Review

The Draft ToR will be available for review on **June 12, 2020**. Members of the public, agencies, Indigenous communities, and other interested persons are encouraged to actively participate in reviewing and providing comments on the Draft ToR. We request that you provide any questions or comments to the study team using the contact information provided below by **July 31, 2020**. All comments received as part of this review will be considered in the preparation of the Final ToR, to be submitted for approval by the Minister.

The Draft ToR will be posted for review on the GFL project website www.gflenv.com/moose-creek-eowhf. Due to the COVID-19 pandemic, the Draft ToR will not be available for review in person at publicly-accessible locations. If you have difficulty obtaining a copy of the Draft ToR from the project website, please inform GFL using the information below.

You are encouraged to submit your comments or questions on the Draft ToR by mail, email, telephone, or fax to the attention of:

Mr. Greg van Loenen, Environmental Compliance Officer
GFL Environmental Inc.
17125 Lafleche Road, Moose Creek, Ontario K0C 1W0
Telephone: 613-538-2776 ext. 223
Fax: 613-538-2779
Email: gvanloenen@gflenv.com

All personal information included in a submission – such as name, address, telephone number and property location – is collected, maintained and disclosed by the Ministry of the Environment, Conservation and Parks for the purposes of transparency and consultation. The information is collected under the authority of the Environmental Assessment Act or is collected and maintained for the purpose of creating a record that is available to the general public as described in s.37 of the Freedom of Information and Protection of Privacy Act. Personal information you submit will become part of a public record that is available to the general public unless you request that your personal information remain confidential. For more information, please contact the Ministry of the Environment, Conservation and Parks' Freedom of Information and Privacy Coordinator at 416-327-1434.

Avis de révision Ébauche du cadre de référence pour une évaluation environnementale Développement futur de l'installation de traitement des déchets de l'Est de l'Ontario

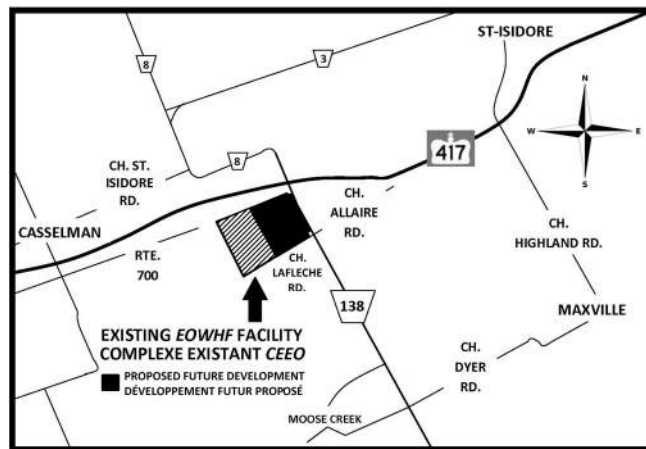
GFL Environmental Inc., propriétaire et exploitant de l'actuel centre de traitement des déchets de l'est de l'Ontario (EOWHF) à Moose Creek, en Ontario, a entrepris une évaluation environnementale (EE) en vue d'obtenir l'approbation pour le futur développement du EOWHF. Le futur développement comprendra la construction d'une capacité supplémentaire d'élimination du site d'enfouissement. GFL a déterminé qu'il y a une occasion d'affaires durable et que l'EOWHF doit continuer à fournir une capacité d'élimination à long terme. En développant cette capacité d'élimination supplémentaire, GFL sera également en mesure de continuer à fournir des services de réduction de déchets et de compostage des matières organiques à ses clients. L'EOWHF est un employeur et un contributeur financier important pour la communauté locale. Le développement d'environ 15,1 millions de mètres cubes de capacité supplémentaire d'élimination des déchets sur une période de planification de 20 ans permettra à GFL de continuer à fournir ce type de soutien économique à la collectivité locale. Aucun changement au volume d'enfouissement autorisé ou aux routes d'accès au site n'est proposé.

L'EOWHF est situé dans le canton de North Stormont, à environ 5 kilomètres au nord-nord-ouest du village de Moose Creek, en Ontario, et à 5 kilomètres à l'est du village de Casselman, en Ontario. Le futur développement proposé sera situé sur des terrains qui appartiennent actuellement ou qui seront détenues par GFL, et pourrait inclure une zone de l'EOWHF existant si nécessaire. L'emplacement de l'EOWHF existant et le futur développement proposé sont indiqués dans le Plan clé ci-dessous. L'EE a pour objet d'évaluer les effets potentiels du futur développement sur l'environnement.

Le processus

L'EE sera effectuée conformément aux exigences de la Loi sur l'évaluation environnementale. La première étape du processus est la préparation du cadre de référence (ToR). Le ToR établira le cadre de travail et le plan de travail du promoteur pour répondre aux exigences de la Loi sur l'évaluation environnementale au moment de préparer l'EE, y compris les solutions de rechange qui seront envisagées et les activités de consultation publique qui seront menées. Si le ministre de l'Environnement, de la Conservation et des Parcs l'approuve, le ToR fournira le cadre et les exigences pour la préparation de l'EE.

PLAN CLÉ



Révision de l'ébauche ToR

L'ébauche du ToR sera disponible pour examen le **12 juin 2020**. Les membres du public, les agences, les communautés autochtones et les autres personnes intéressées sont encouragées à participer activement à l'examen et à la formulation de commentaires sur l'ébauche du ToR. Nous vous demandons de soumettre vos questions ou commentaires à l'équipe d'étude en utilisant les coordonnées fournies ci-dessous avant le **31 juillet 2020**. Tous les commentaires reçus dans le cadre de cet examen seront pris en compte dans la préparation du cadre de référence final, qui sera soumis à l'approbation du ministre.

L'ébauche du ToR sera publiée pour examen sur le site Web du projet GFL www.gflenv.com/moose-creek-eowhf. En raison de la pandémie de COVID-19, l'ébauche du ToR ne sera pas disponible pour examen en personne dans les endroits accessibles au public. Si vous avez des difficultés à obtenir une copie de l'ébauche du ToR sur le site Web du projet, veuillez en informer GFL en utilisant les informations ci-dessous.

Nous vous encourageons à soumettre vos commentaires ou questions sur l'ébauche du ToR par courrier, téléphone ou fax à l'attention de:

M. Greg van Loenen, agent de conformité environnementale GFL Environmental Inc.
17125, chemin Lafleche, Moose Creek (Ontario) K0C 1W0
Téléphone : 613-538-2776 ext. 223
Télécopieur : 613-538-2779
Courriel : gvanloenen@gflenv.com

Tous les renseignements personnels inclus dans une présentation – comme le nom, l'adresse, le numéro de téléphone et l'emplacement de la propriété – sont recueillis, conservés et communiqués par le ministère de l'Environnement, Conservation et Parc à des fins de transparence et de consultation. Les renseignements sont recueillis en vertu de la Loi sur l'évaluation environnementale ou sont recueillis et conservés aux fins de la création d'un document accessible au grand public conformément à l'article 37 de la Loi sur l'accès à l'information et Loi sur la protection de la vie privée. Les renseignements personnels que vous soumettez seront versés dans un dossier public qui est accessible au grand public, à moins que vous ne demandiez que vos renseignements personnels demeurent confidentiels. Pour de plus amples renseignements, veuillez communiquer avec le coordonnateur de l'accès à l'information et de la protection des renseignements personnels du ministère de l'Environnement, de la Conservation et des Parcs au 416-327-1434.

Beri, Kelly

From: Beri, Kelly
Sent: Tuesday, June 23, 2020 11:14 AM
To: Abram Benedict; kylee.tarbell@akwesasne.ca; peggy.pyke@akwesasne.ca
Cc: gvanloenen@gflenv.com; Fedec, Larry; Semmler, Courtney
Subject: GFL EOWHF Future Development - Stage 1 Archaeological Assessment
Attachments: GFL EOWHF Future Development - Stage 1 Arch Assessment.pdf

Good morning,

On behalf of GFL Environmental Inc., please find attached the Stage 1 Archaeological Assessment for the future development of the Eastern Ontario Waste Handling Facility.

If you have any questions or comments on the assessment, you are encouraged to provide them by mail, email, telephone, or fax to the contact information below by July 31, 2020.

Mr. Greg van Loenen, Environmental Compliance Officer
GFL Environmental Inc.
17125 Lafleche Road, Moose Creek, Ontario K0C 1W0
Telephone: 613-538-2776 ext. 223
Fax: 613-538-2779
Email: gvanloenen@gflenv.com

Regards,
Kelly

Kelly Beri, B.A.Sc.
Environmental Planner

HDR
100 York Boulevard, Suite 300
Richmond Hill, ON L4B 1J8
D 416.895.5428
kelly.beri@hdrinc.com

hdrinc.com/follow-us

Beri, Kelly

From: Beri, Kelly
Sent: Tuesday, June 23, 2020 11:13 AM
To: algonquins@tanakiwin.com
Cc: gvanloenen@gflenv.com; Fedec, Larry; Semmler, Courtney
Subject: GFL EOWHF Future Development - Stage 1 Archaeological Assessment
Attachments: GFL EOWHF Future Development - Stage 1 Arch Assessment.pdf

Good morning,

On behalf of GFL Environmental Inc., please find attached the Stage 1 Archaeological Assessment for the future development of the Eastern Ontario Waste Handling Facility.

If you have any questions or comments on the assessment, you are encouraged to provide them by mail, email, telephone, or fax to the contact information below by July 31, 2020.

Mr. Greg van Loenen, Environmental Compliance Officer
GFL Environmental Inc.
17125 Lafleche Road, Moose Creek, Ontario K0C 1W0
Telephone: 613-538-2776 ext. 223
Fax: 613-538-2779
Email: gvanloenen@gflenv.com

Regards,
Kelly

Kelly Beri, B.A.Sc.
Environmental Planner

HDR
100 York Boulevard, Suite 300
Richmond Hill, ON L4B 1J8
D 416.895.5428
kelly.beri@hdrinc.com

hdrinc.com/follow-us

Beri, Kelly

From: Beri, Kelly
Sent: Tuesday, June 23, 2020 11:11 AM
To: tina.durant@cnhw.qc.ca; maxime.picard@cnhw.qc.ca
Cc: gvanloenen@gflenv.com; Fedec, Larry; Semmler, Courtney
Subject: GFL EOWHF Future Development - Stage 1 Archaeological Assessment
Attachments: GFL EOWHF Future Development - Stage 1 Arch Assessment.pdf

Good morning,

On behalf of GFL Environmental Inc., please find attached the Stage 1 Archaeological Assessment for the future development of the Eastern Ontario Waste Handling Facility.

If you have any questions or comments on the assessment, you are encouraged to provide them by mail, email, telephone, or fax to the contact information below by July 31, 2020.

Mr. Greg van Loenen, Environmental Compliance Officer
GFL Environmental Inc.
17125 Lafleche Road, Moose Creek, Ontario K0C 1W0
Telephone: 613-538-2776 ext. 223
Fax: 613-538-2779
Email: gvanloenen@gflenv.com

Regards,
Kelly

Kelly Beri, B.A.Sc.
Environmental Planner

HDR
100 York Boulevard, Suite 300
Richmond Hill, ON L4B 1J8
D 416.895.5428
kelly.beri@hdrinc.com

hdrinc.com/follow-us

From: Maxime Picard [mailto:maxime.picard@cnhw.qc.ca]

Sent: Tuesday, June 23, 2020 3:14 PM

To: Beri, Kelly <Kelly.Beri@hdrinc.com>

Cc: gvanloenen <gvanloenen@gflenv.com>; Fedec, Larry <Larry.Fedec@hdrinc.com>; Semmler, Courtney <Courtney.Semmler@hdrinc.com>

Subject: Re: GFL EOWHF Future Development - Stage 1 Archaeological Assessment

CAUTION: [EXTERNAL] This email originated from outside of the organization. Do not click links or open attachments unless you recognize the sender and know the content is safe.

Well received and thanks for following-up Kelly.

We will let you know if we have any comments.

Maxime Picard

-----Original Message-----

From: Phillip Whitecree [mailto:phillip.whitecree@akwasasne.ca]

Sent: Wednesday, June 24, 2020 9:47 AM

To: Greg van Loenen <gvanloenen@gflenv.com>

Cc: Cactus Cook-Sunday <cactus.sunday@akwasasne.ca>; Peggy Pyke <peggy.pyke@akwasasne.ca>

Subject: Stage 1 Archaeological Assessment: Eastern Ontario waste Handling Facility Future Development Part of Lots 13-16, concession 10 and Lots 16-19 Concession 9 Township of North Stormont.

CAUTION: This email originated from outside of the organization. Do not click links or open attachments unless you recognize the sender and know the content is safe.

Good Morning,

Please see the attached letter regarding the Stage 1 Archaeological Assessment: Eastern Ontario waste Handling Facility Future Development Part of Lots 13-16, concession 10 and Lots 16-19 Concession 9 Township of North Stormont.

Phillip

--

Phillip White-Cree, B.Arch.

Senior Researcher, Aboriginal Rights and Research Office

Mohawk Council of Akwasasne

PO Box 90

Akwasasne, Quebec H0M 1A0

613.575.2250 ext. 2204

This e-mail may be privileged and/or confidential, and the sender does not waive any related rights and obligations. Any distribution, use or copying of this e-mail or the information it contains by other than an intended recipient is unauthorized. If you received this e-mail in error, please advise me (by return e-mail or otherwise) immediately.



Ohiari:ha/June 24, 2020

Mr. Greg van Loenen, Environmental Compliance Officers
GFL Environmental Inc.
17125 Lafleche Road, Moose Creek, Ontario K0C 1W0

RE: Stage 1 Archaeological Assessment: Eastern Ontario waste Handling Facility Future Development Part of Lots 13-16, concession 10 and Lots 16-19 Concession 9 Township of North Stormont.

She:kon (Greetings),

After reviewing the *Stage 1 Archaeological Assessment: Eastern Ontario waste Handling Facility Future Development Part of Lots 13-16, concession 10 and Lots 16-19 Concession 9 Township of North Stormont* report dated June 17, 2020, our office concurs with the recommendation that no further work is needed. As there are no archeological resources found.

We do have a recommendation within the Historical Context section of the report. The outdated hierarchical term of 'Band' is used in several areas, to which the more correct and term would be 'groups.' Our recommendation would be to refrain from using the antiquated term of 'Bands' in describing any Historical context.

Thank you for providing the report and at this time we have no further comment on this project.

Nia:wen (Thank You),

A handwritten signature in black ink, appearing to read "Phillip White-Cree".

Phillip White-Cree, Senior Researcher
Mohawk Council of Akwesasne: Aboriginal Rights and Research Office

-----Original Message-----

From: Greg van Loenen [mailto:gvanloenen@gflenv.com]

Sent: Wednesday, June 24, 2020 10:16 AM

To: 'Phillip Whitecree' <phillip.whitecree@akwesasne.ca>

Cc: Cactus Cook-Sunday <cactus.sunday@akwesasne.ca>; Peggy Pyke <peggy.pyke@akwesasne.ca>; Fedec, Larry <Larry.Fedec@hdrinc.com>

Subject: RE: Stage 1 Archaeological Assessment: Eastern Ontario waste Handling Facility Future Development Part of Lots 13-16, concession 10 and Lots 16-19 Concession 9 Township of North Stormont.

CAUTION: [EXTERNAL] This email originated from outside of the organization. Do not click links or open attachments unless you recognize the sender and know the content is safe.

Good morning Phillip,

Thank you for your interest in our project. We appreciate your feedback and have noted your recommendation on the proper terminology regarding Indigenous Groups.

If you have any further questions or concerns, please do not hesitate to contact me.

Thank you,
Greg

Greg van Loenen | Agent de conformité environnemental/ Environmental Compliance Officer GFL Environmental Inc.

17125 Lafleche Road, Moose Creek, ON, K0C 1W0 T (613) 538-2776 ext:223 | F (613) 538-2779 |

gvanloenen@gflenv.com |

<https://nam12.safelinks.protection.outlook.com/?url=http%3A%2F%2Fwww.gflenv.com%2F&data=02%7C01%7CLarry.Fedec%40hdrinc.com%7Cad4cc192fa5441c778d808d81849247e%7C3667e201cbdc48b39b425d2d3f16e2a9%7C0%7C0%7C637286050034281325&sddata=uHy5R%2FI3%2FdxsV5B8RNUO%2FQdezLVYqK8E9xz4DRVe51U%3D&reserved=0>

Confidentiality Notice: This email message (including attachments, if any) is intended for the use of the individual or entity to which it is addressed and may contain information that is privileged, proprietary, confidential and exempt from disclosure. If you are not the intended recipient, you are notified that any dissemination, distribution or copying of this communication is strictly prohibited. If you have received this communication in error, please notify the sender and erase this email message immediately.

Beri, Kelly

From: Beri, Kelly
Sent: Wednesday, July 29, 2020 9:51 AM
To: 'Maxime Picard'
Cc: gvanloenen; Fedec, Larry; Semmler, Courtney
Subject: RE: GFL EOWHF Future Development - Stage 1 Archaeological Assessment

Good morning Maxime,

To follow up on the email below, do you think you will be providing any comments on the Stage 1 Archaeological Assessment for July 31st?
Also, will you be providing any comments on the Draft Terms of Reference in the same timeframe?

Regards,
Kelly

Kelly Beri, B.A.Sc.
D 416.895.5428

hdrinc.com/follow-us

From: Maxime Picard [mailto:maxime.picard@cnhw.qc.ca]
Sent: Tuesday, June 23, 2020 3:14 PM
To: Beri, Kelly <Kelly.Beri@hdrinc.com>
Cc: gvanloenen <gvanloenen@gflenv.com>; Fedec, Larry <Larry.Fedec@hdrinc.com>; Semmler, Courtney <Courtney.Semmler@hdrinc.com>
Subject: Re: GFL EOWHF Future Development - Stage 1 Archaeological Assessment

CAUTION: [EXTERNAL] This email originated from outside of the organization. Do not click links or open attachments unless you recognize the sender and know the content is safe.

Well received and thanks for following-up Kelly.

We will let you know if we have any comments.

Maxime Picard

From: Maxime Picard <maxime.picard@cnhw.qc.ca>
Sent: Wednesday, July 29, 2020 10:15 AM
To: Beri, Kelly
Cc: gvanloenen; Fedec, Larry; Semmler, Courtney
Subject: Re: GFL EOWHF Future Development - Stage 1 Archaeological Assessment

CAUTION: [EXTERNAL] This email originated from outside of the organization. Do not click links or open attachments unless you recognize the sender and know the content is safe.

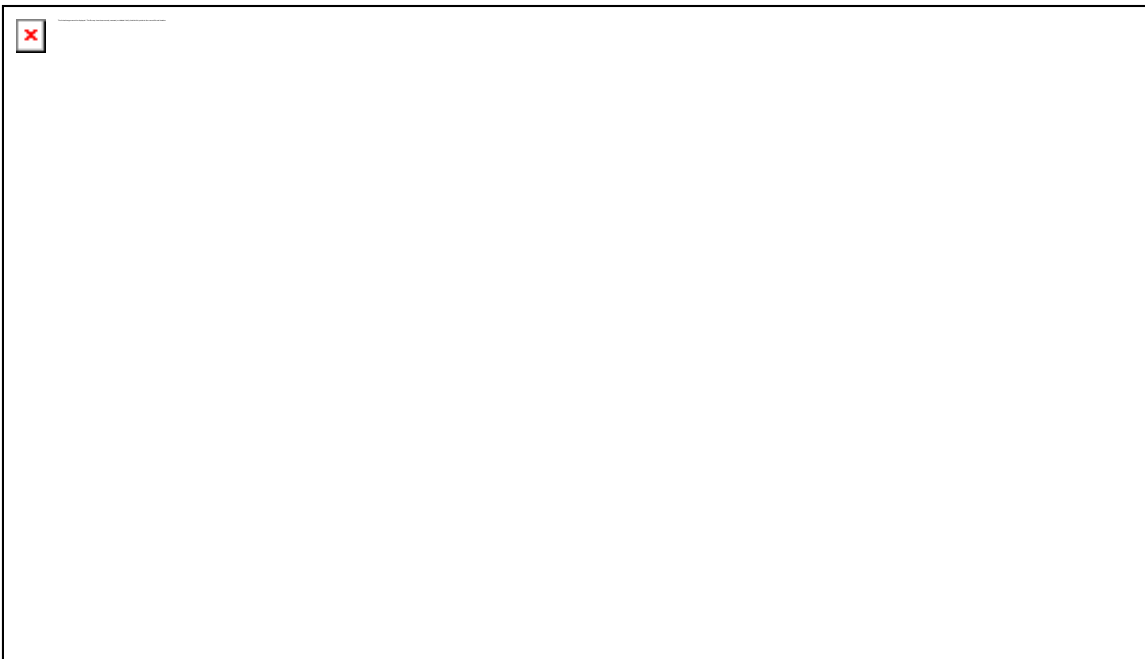
Good morning Kelly,

After review the Huron-Wendat Nation does not have any comments on the Stage 1 report.

However we insist to be informed and updated on any archaeology that would be initiated as part of next project phases.

Thanks and best regards,

Maxime



Beri, Kelly

From: Beri, Kelly
Sent: Friday, July 31, 2020 9:28 AM
To: 'algonquins@tanakiwin.com'
Cc: 'gvanloenen@gflenv.com'; Fedec, Larry; Semmler, Courtney
Subject: RE: GFL EOWHF Future Development - Stage 1 Archaeological Assessment

Follow Up Flag: Follow up
Flag Status: Flagged

Good morning,

To follow up on the email below, do you think you will be providing any comments on the Stage 1 Archaeological Assessment today?
Also, do you expect to be sending any comments through today on the Draft Terms of Reference?

Regards,
Kelly

Kelly Beri, B.A.Sc.
D 416.895.5428

hdrinc.com/follow-us

From: Beri, Kelly
Sent: Tuesday, June 23, 2020 11:07 AM
To: 'algonquins@tanakiwin.com' <algonquins@tanakiwin.com>
Cc: 'gvanloenen@gflenv.com' <gvanloenen@gflenv.com>; Fedec, Larry <Larry.Fedec@hdrinc.com>; Semmler, Courtney <Courtney.Semmler@hdrinc.com>
Subject: GFL EOWHF Future Development - Stage 1 Archaeological Assessment

Good morning,

On behalf of GFL Environmental Inc., please find attached the Stage 1 Archaeological Assessment for the future development of the Eastern Ontario Waste Handling Facility.
If you have any questions or comments on the assessment, you are encouraged to provide them by mail, email, telephone, or fax to the contact information below by July 31, 2020.

Mr. Greg van Loenen, Environmental Compliance Officer
GFL Environmental Inc.
17125 Lafleche Road, Moose Creek, Ontario K0C 1W0
Telephone: 613-538-2776 ext. 223
Fax: 613-538-2779
Email: gvanloenen@gflenv.com

Regards,
Kelly

Kelly Beri, B.A.Sc.
Environmental Planner

HDR
100 York Boulevard, Suite 300
Richmond Hill, ON L4B 1J8
D 416.895.5428
kelly.beri@hdrinc.com

hdrinc.com/follow-us