



PIERREFONDS LANDFILL SITE
(Former Meloche quarry)

SITE CLOSURE WORKS

AUGUST 2019 TO SEPTEMBER 2020

The former Meloche quarry has been in operation since 1999 and Matrec became the owner in 2016. Upon acquisition by Matrec, an action plan was developed to accelerate site closure and complete facility upgrades to address the odor problems.

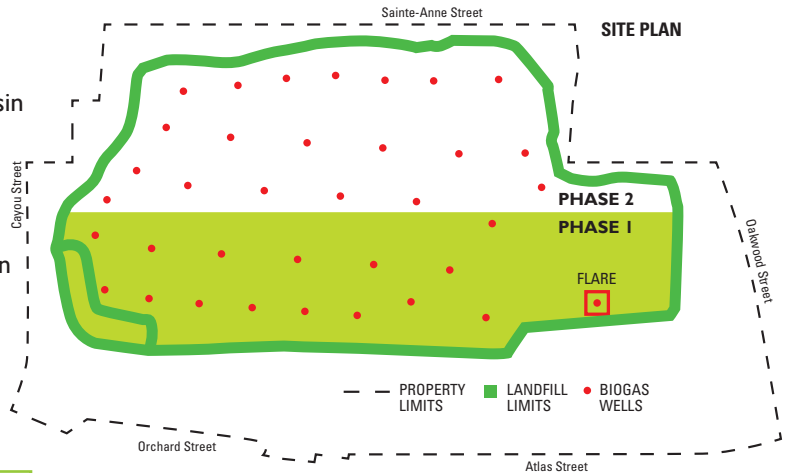
The implementation of the action plan required the authorization of the Ministère de l'Environnement et de la Lutte contre les changements climatiques du Québec (MELCC). Authorizations were delivered to Matrec at the end of June 2019.

Improvement work began in early August 2019 and is expected to be completed by the end of September 2020. This work, estimated at \$10 million, will

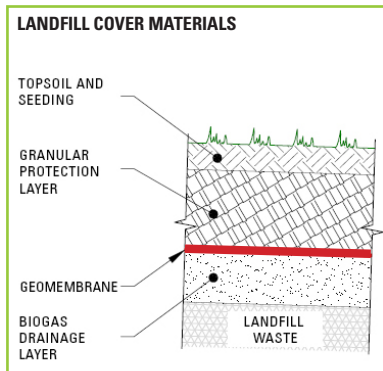
- **Increase by 400% the capacity of the biogas collection system**
- **Destroy the biogas responsible for the smells around the site**
- **Make the site water and airtight with a new cap that has geomembranes and cover materials**

PHASE I – AUGUST 2019 TO FEBRUARY 2020 – WESTERN SECTION

- Excavation and development of a stormwater retention basin – **Completed**
- Drilling and installation of 15 new vertical biogas wells – **Completed**
- Installation of a geomembrane to cover the western section of the site – **Completed**
- Placement of new cap that has different layers of cover materials (see illustration) – **Work in progress**
- Installation of piping connecting the new biogas wells to the new flare – **Work in progress**



- Installation and start-up of a new flare to biogas captured by wells in the western section
- Start of the new flare: **February 2020**



PHASE 2 – MARCH/APRIL TO SEPTEMBER 2020 – EASTERN SECTION

- Development of a perimeter ditch to redirect water to the retention basin
- Drilling and installation of 20 new vertical biogas wells
- Installation of a geomembrane to cover the Eastern section of the site
- Placing different layers of cover material (see illustration)
- Installation of piping connecting the biogas wells in the eastern section to the new flare. When this stage is completed, all wells will be connected to the new flare that will ensure the destruction of biogas captured.
- Seeding of the entire site
- Completion of works and closure of the site



Matrec and the contractors on the site are aware that the improvement work in progress can unfortunately cause inconvenience to the citizens nearby. Installation of new, more efficient equipment through the mass of landfill waste, as well as the transition from the old biogas capture and destruction system to the new one being installed could cause occasional odours around the site. Matrec is sensitive to this situation and will do everything possible to minimize impacts on the neighbourhood.

Tight controls after site closure

The regulations require landfill owners to closely monitor the facility for 30 years following the closure of the site. Matrec will therefore be required to submit regular control reports to the MELCC. To that end, the company created a multi-million dollar fund to monitor the site in the future.

To learn about the work and its progress

Matrec will regularly provide information on the work and its progress on its website. In addition, you will find telephone numbers to address your questions or concerns.
<http://gflenv.com/pierrefonds>