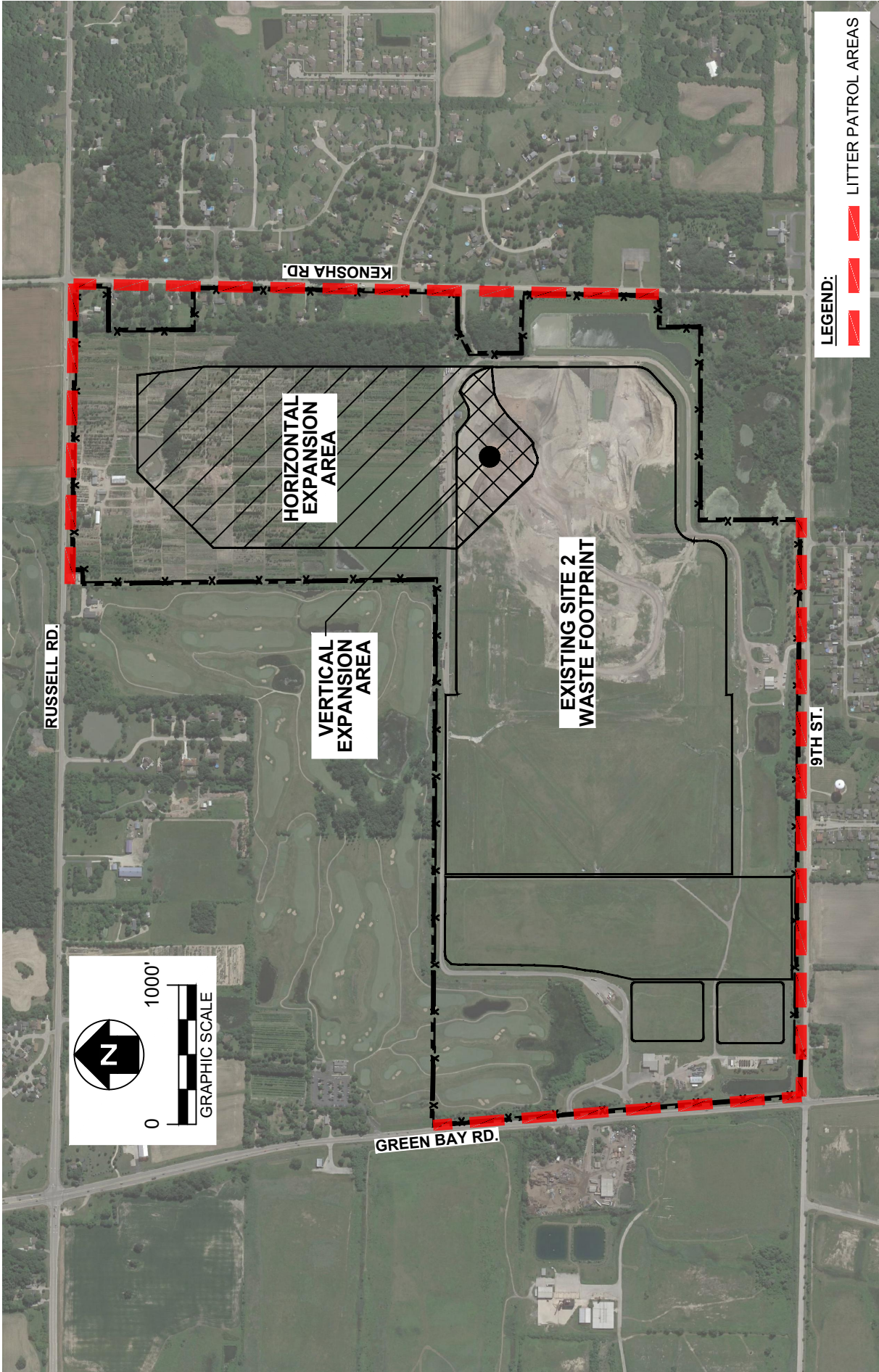


## Zion Landfill Litter Control Plan

A number of operating procedures will be employed at the Landfill to minimize and control litter. These procedures include:

- Incoming refuse vehicles will be required to be fully enclosed or to have covers or tarps to prevent waste from blowing out of the vehicles.
- The active fill area will be kept as small as possible (while allowing for safe operation), and will be covered at the end of each day with daily cover materials that will include soil, wood chips, synthetic covers, or other alternate daily cover materials as approved by the IEPA.
- The Landfill will use portable fences and a facility boundary fence to contain litter. Portable fences will be used to prevent blowing litter when fill operations are occurring above the natural ground line. Portable fencing will be placed downwind of the wind direction on each operating day when filling is occurring at the landfill's plateau. The length of the fencing will be long enough to accommodate changes in wind direction throughout the operating day.
- The Landfill will construct a perimeter litter fence, approximately 20-feet tall, from the north side of Foreman Drive, northward toward Russell Road. The initial section of this fence will be constructed prior to filling the first expansion cell. This section, as well as each subsequent section, will extend at least 200 feet north of the northern extent of the cell to be filled, except for the northernmost cell. The northernmost section of fence will end near the proposed north basin.
- Untarpping of transfer trailers will not occur along the eastern perimeter road, located closest to North Kenosha Road.
- Loads known to be sources of material that becomes easily airborne will be scheduled during suitable weather conditions.
- The Facility will monitor an on-site wind gauge and will suspend waste acceptance when sustained wind speeds reach 40 miles per hour, over a 15-minute period. Operations may resume once wind speeds do not meet or exceed 40 miles per hour, continuously, for 15 minutes.
- Management will direct laborers to patrol the Facility, as well as surrounding property (see **Figure 1**), to collect any litter escaping from the active fill area, including litter caught by the portable and perimeter fencing. After high wind events, defined as events where weather conditions in combination with current filling operations, increases the likelihood of windblown litter escaping the Facility, the collection of any observed offsite litter will generally be prioritized over litter contained on-site by fencing. Focus areas will be determined from site management's inspections of the areas downwind of the facility during and following the high wind event. If litter is found outside of the Facility, laborers will be directed to collect litter from community areas extending beyond the patrol areas in **Figure 1**. The collected litter will be placed in plastic bags and transported to the active face for disposal.



**ZION LANDFILL - SITE 2 NORTH EXPANSION  
CITY OF ZION, ILLINOIS**

**FIGURE 1  
LITTER PATROL AREAS**