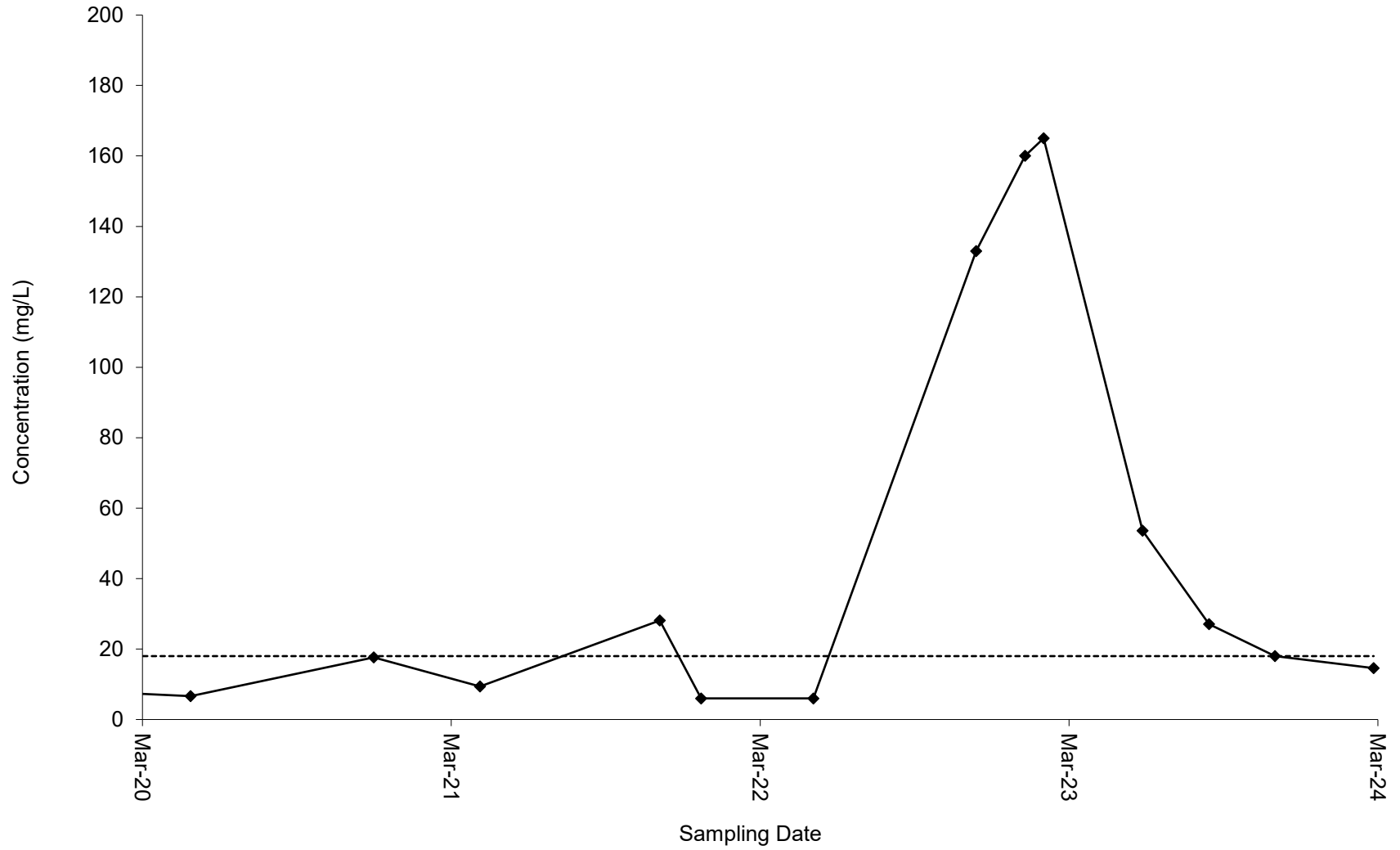
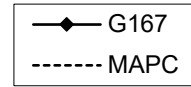
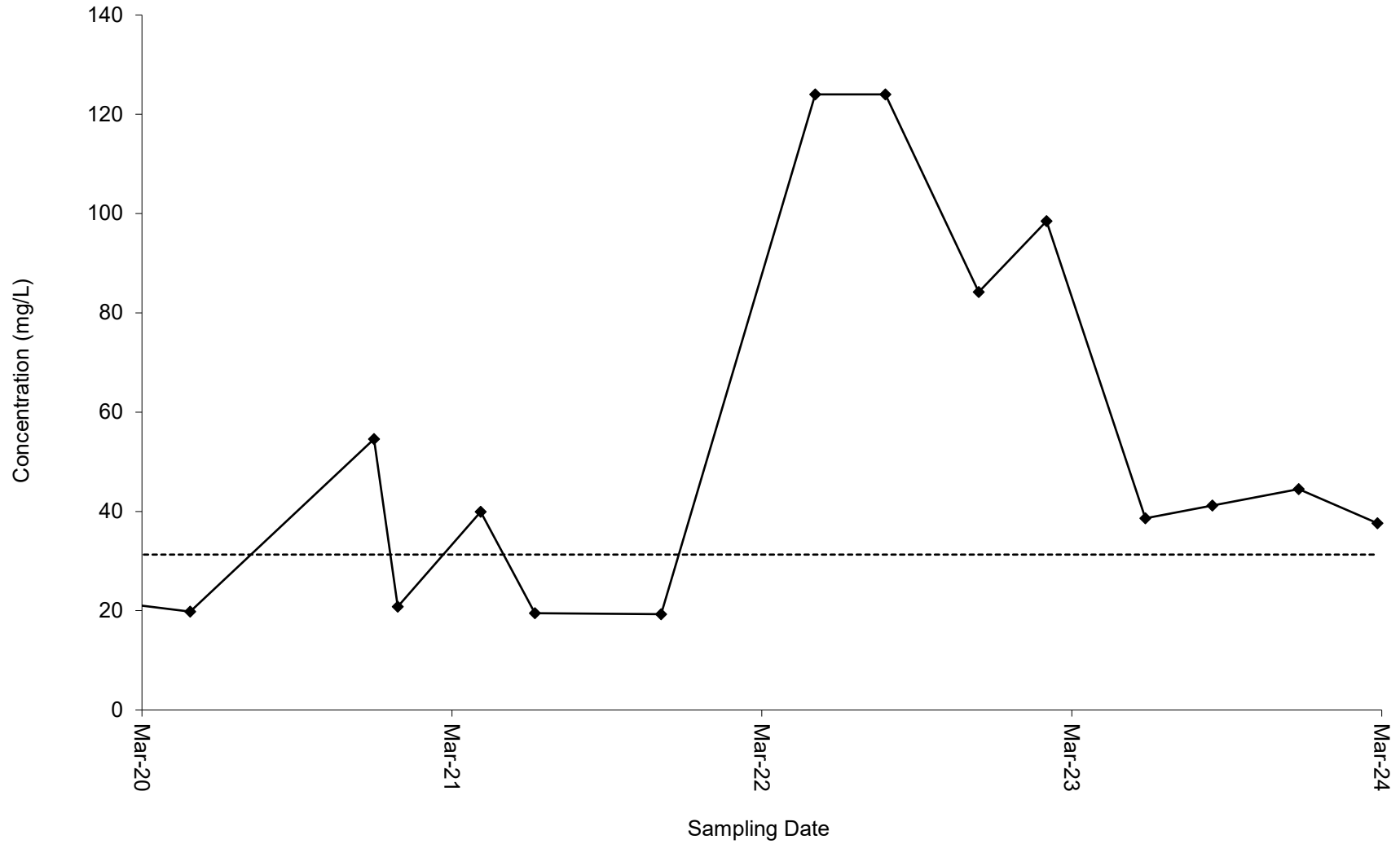
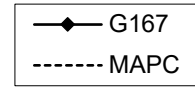


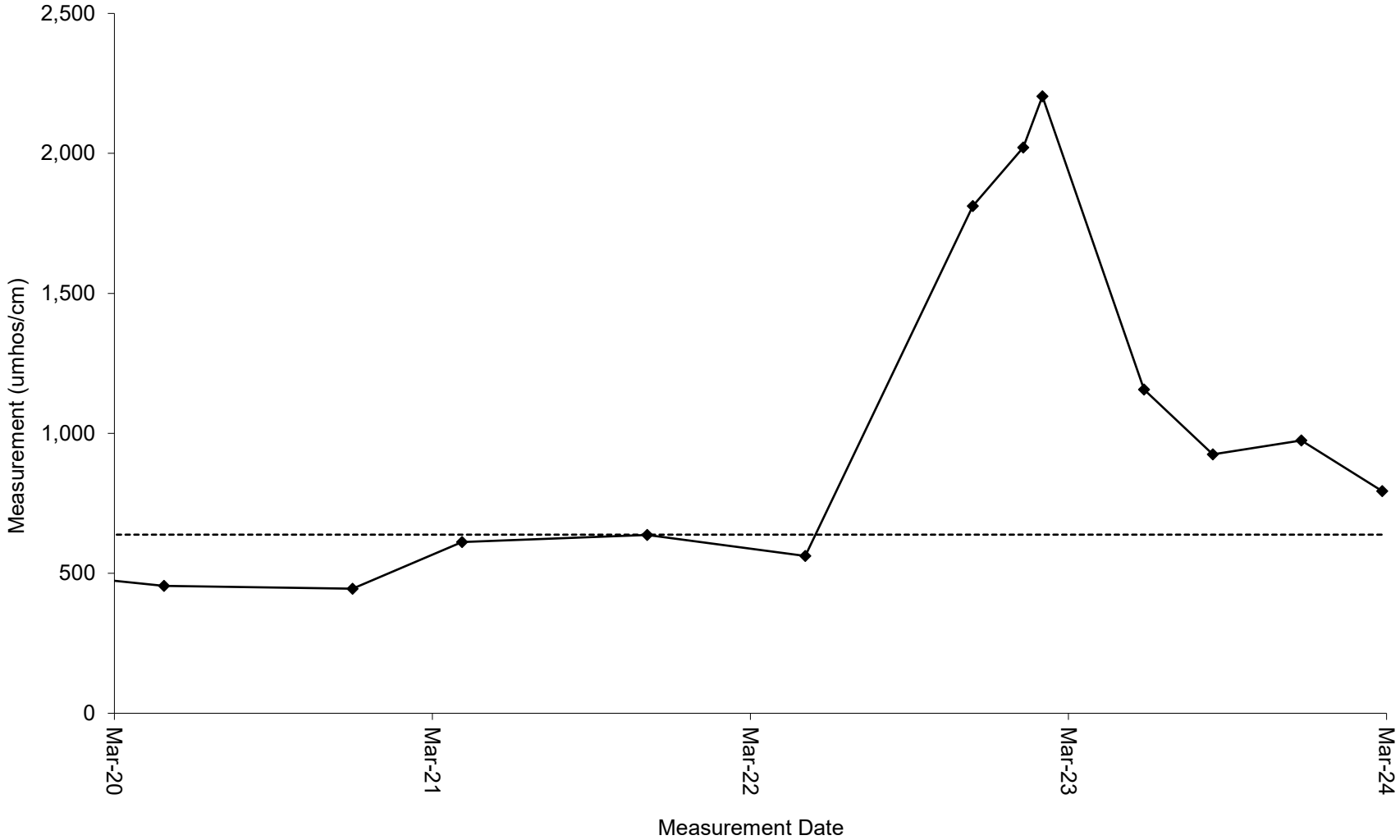
Chloride, Dissolved in ZOA Well G167
Zion Landfill



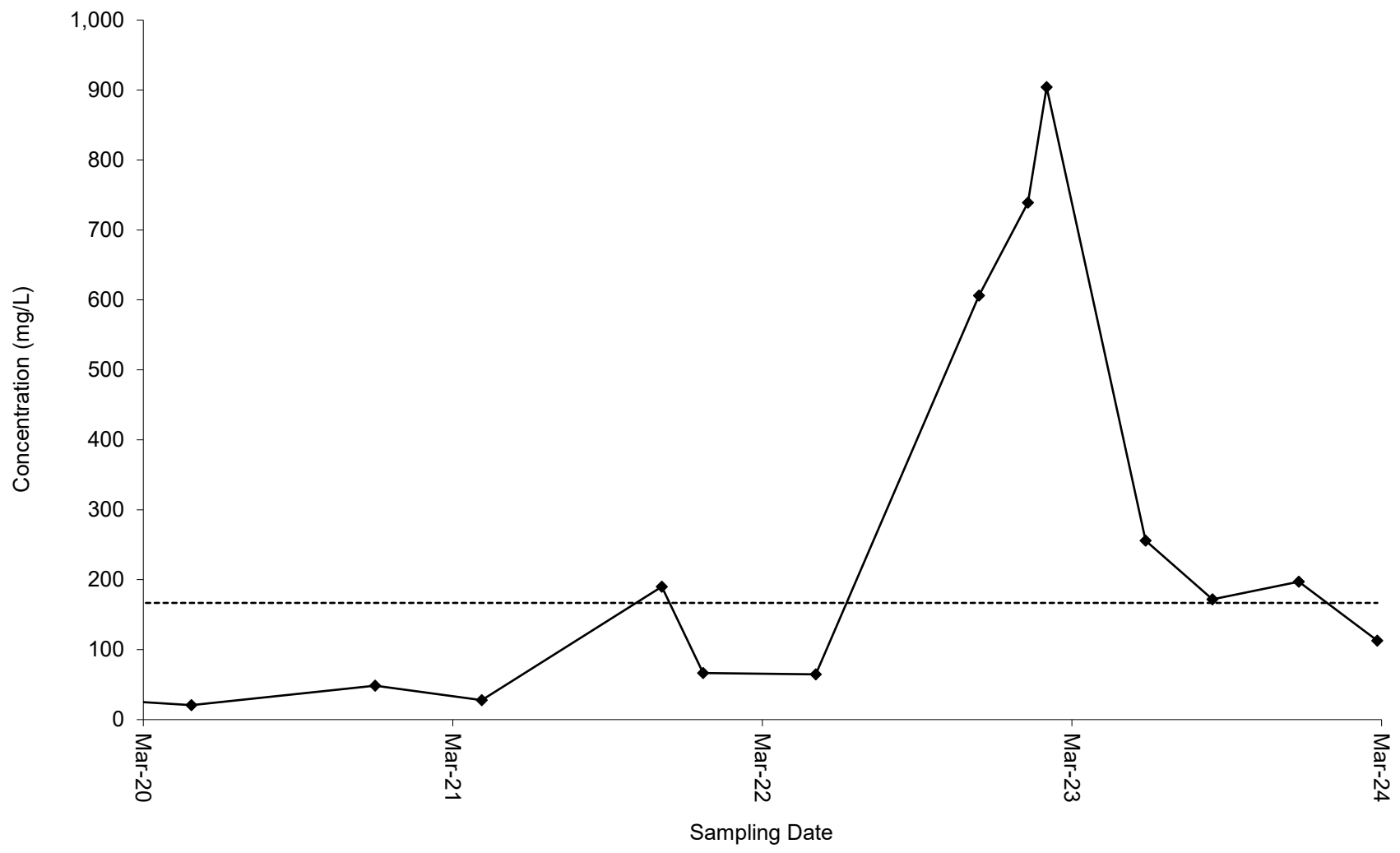
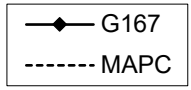
Magnesium, Dissolved in ZOA Well G167
Zion Landfill



Specific Conductance in ZOA Well G167
Zion Landfill



Sulfate, Dissolved in ZOA Well G167
Zion Landfill



Total Dissolved Solids in ZOA Well G167
Zion Landfill

